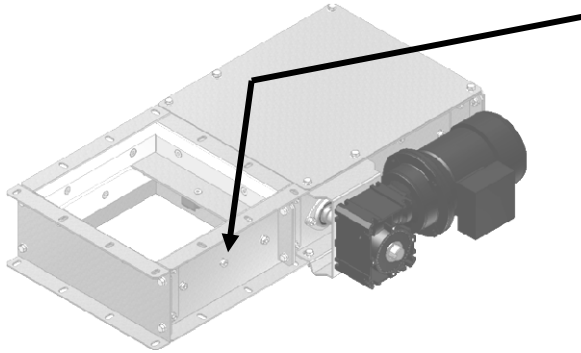




LAMBTON CONVEYOR LIMITED  
1247 Florence Road  
Florence, ON  
Canada, N0P 1R0  
Telephone 1-519-695-2316  
Toll free 1-888-239-9713  
Fax 1-519-695-2529

### RACK AND PINION SLIDE GATES – GENERAL FITMENT

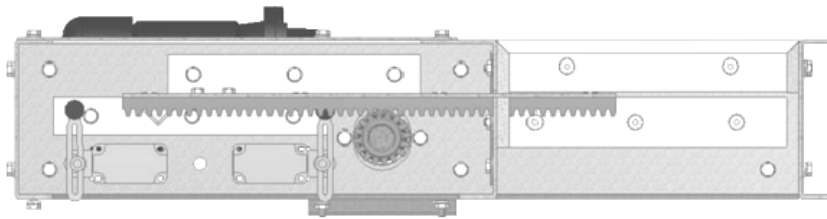


Lambton slide gates utilize UHMW slide rails that are bolted in slotted holes. These slotted holes allow for adjustment of the slide rails.

**Please note that if your gate is binding or not sliding properly that you may have to adjust these slide rails.**

**Also ensure that the gear is not meshed too deeply into the rack.**

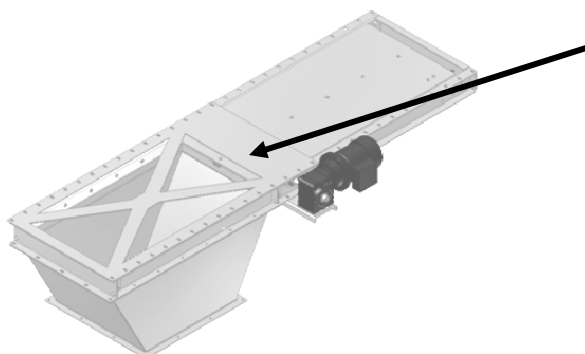
### ELECTRIC RACK AND PINION SLIDE GATES



Electric gates come with mounted limit switches and a mounted gear box. The motor and motor adapter plate are shipped separately (not mounted).

**Please note that the limit switches must be adjusted on site to ensure proper travel of the gate before powering the motor. Do not over travel the slide plate and bind the gate as serious damage can be inflicted on the reducer drive. See wiring schematic on back.**

### DRAG CONVEYOR INTERMEDIATE RACK AND PINION SLIDE GATES



Use the template bolted to the top of the gate to cut a pattern in the bottom of the conveyor trunking. Then discard the template and bolt the gate directly to the bottom of the conveyor.

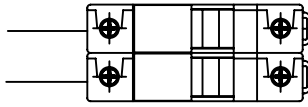
Once tightened down ensure that the slide plate moves freely. If it does not, adjust the UHMW slide rails that support the slide plate. These slide rails are bolted in slotted holes that allow for adjustment.

NAME:

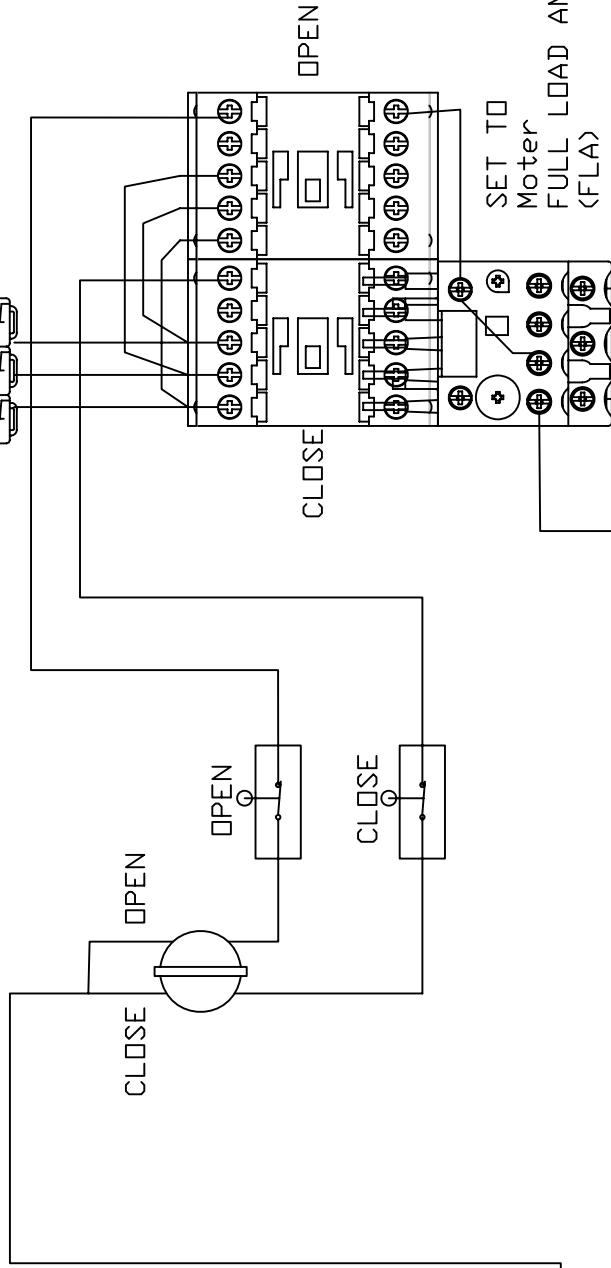
DATE:

Power  
110-240VAC  
L1 L2

Power  
For motor  
L1 L2 L3

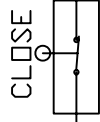
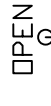


Fuse at  
1.25 X Moter  
FULL LOAD AMPS  
(FLA)

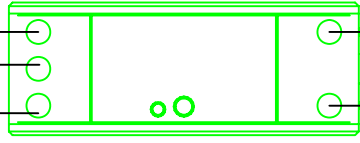


CLOSE

OPEN



Power  
24VDC



BY: SADHU GILL