

Platform Manual

36" 12X7 / 12X8



LAMBTON CONVEYOR LIMITED
102 Arnold Street
Wallaceburg, ON N8A 3P4
Canada

Telephone: (519) 627-8228
Toll free: (888) 239-9713
Fax: (519) 627-0250
www.lambtonconveyor.com



ONE SOURCE • ONE SOLUTION

Revised: March 3, 2009

Table of Contents

Platform Placement	Pg. 3
Rest Platform	Pg. 5-11
Small Work Platform	Pg. 13-16
Large Work Platform	Pg. 17-22
Head Service Platform	Pg. 23-30

Platform Placement

Lambton Conveyor platforms have been specifically designed for placement on certain areas of the bucket elevator. Below is a list of the different types of platforms, their uses, and recommended placement. Any other use or placement aside from the ones mentioned below could result in serious injury or death.

Rest Platform

The Lambton Conveyor rest platform is intended to be used as a safety platform while climbing the elevator to prevent serious injury in the case of a fall. It is to be located every 20' for federal applications, or every 30' as a provincial standard. When standing a bucket elevator in two or more sections the rest platform should be mounted in an adequate position to allow for trunking to be connected (just below the joint).

Work Platform

The Lambton Conveyor work platform is intended to be mounted approximately 6' below the elevator distributor to the trunking and should be used for servicing the distributor and installing down spouts only. Due to various layouts it may be necessary to mount the platform lower in order to miss the distributor valves or spouting.

Head Service Platform

The Lambton Conveyor head service platform is intended to be mounted directly to the elevator head or just below the head with smaller elevators in order to service and repair problems with the head itself or drive assembly. The service platform is not intended to be used anywhere else on the elevator.

It is the owners/operators responsibility to ensure all unauthorized personnel are kept clear of these assemblies and that all workers/operators are aware of the necessary safety precautions.



Owner's Installation Manual

36" Standard Rest Platform

The Lambton Conveyor rest platform is intended to be used as a safety platform located ever 20' of ladder to prevent life threatening injuries in the case of a fall, any other use is strictly prohibited. It is the owner's responsibility to ensure all unauthorized personnel are unable to access these assemblies.

Parts List

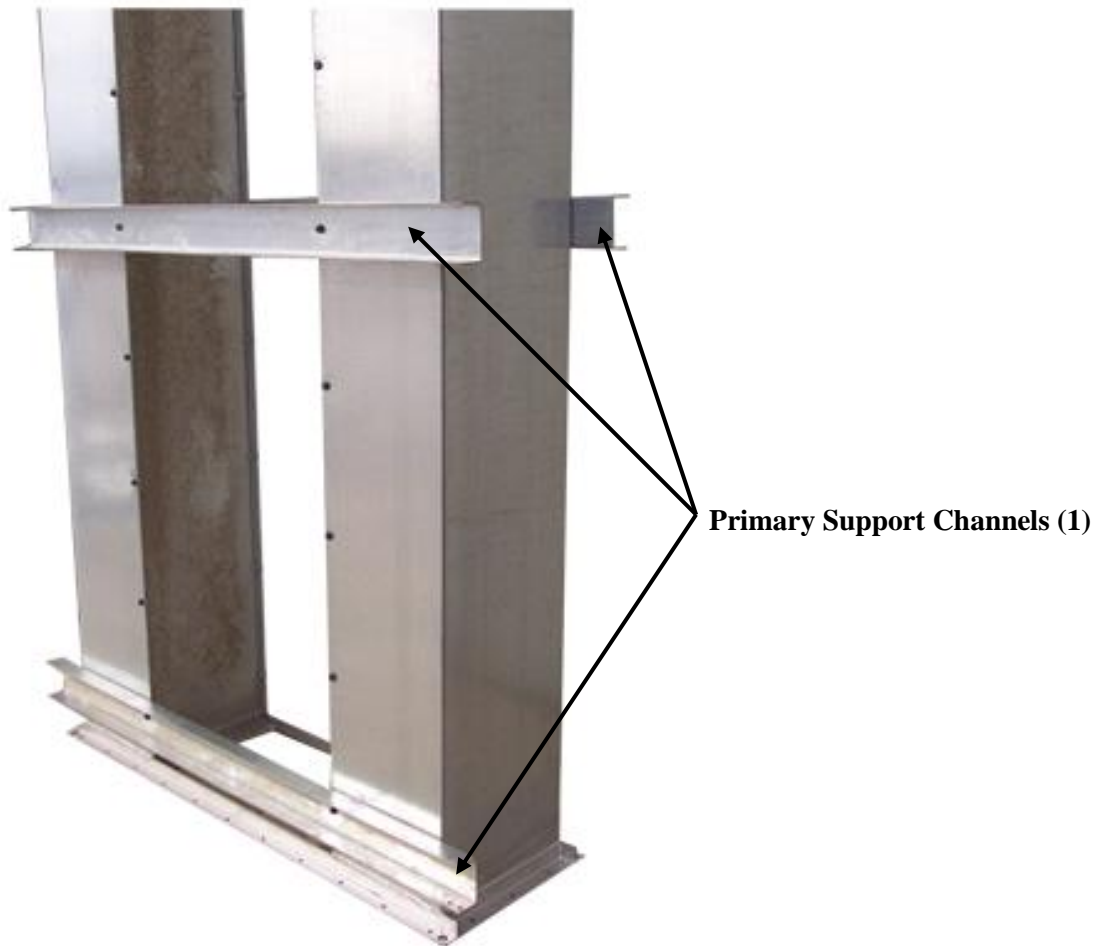
Part Name	#	Part#	Description	Length	Quantity
12x7 Rest Platform		mrurest.036			
Primary Support Channels	1	urestp36.000	C-Channel	65 3/4"	3
Secondary Support Channels	2	urestp36.001	C-Channel	63 5/8"	2
Kick Braces	3	urestp36.006	Angle	56 9/16"	2
Door Panel	4	urestp36.m11	Flat Sheet	26 3/4" x 28 1/2"	1
Floor Panel	5	urestp36.m11	Flat Sheet	63 3/4" x 41"	1
Door Toe Board (long)	6	urestp36.008	Angle	31"	1
Door Handle	7	NA	NA	NA	1
Door Stiffeners	8	urestp36.010	Angle	23"	2
Hinge Stiffeners	9	urestp36.009	Angle	25 5/8"	2
Door Toe Boards (short)	10	urestp36.008	Angle	7 3/4"	2
Front / Rear Toe Board	11	urestp36.003	Angle	64"	2
Side Toe Boards	12	urestp36.002	Angle	41 1/4"	2
Rail Posts	13	urespt36.007	Angle	42"	4
Short Handrails	14	urestp36.004	Angle	40 1/2"	4
Long Handrails	15	urestp36.005	Angle	63 5/16"	4
Door Support Angle	16	uworkp36.011	Angle	41 3/8"	2
5/16" x 3/4" hex head bolts	Use Grade 8 strength bolts Only. Torque to 120 ft. lbs minimum.				50
5/16" x 3/4" truss slot (button head) bolts					50
5/16" hex nuts					100
Hinge kit					1

NOTE: Use truss slot bolts for all floor panel connections.

This platform includes two half "Flared (Starter) cage hoops" which are meant to start the safety cage continuing up the leg.

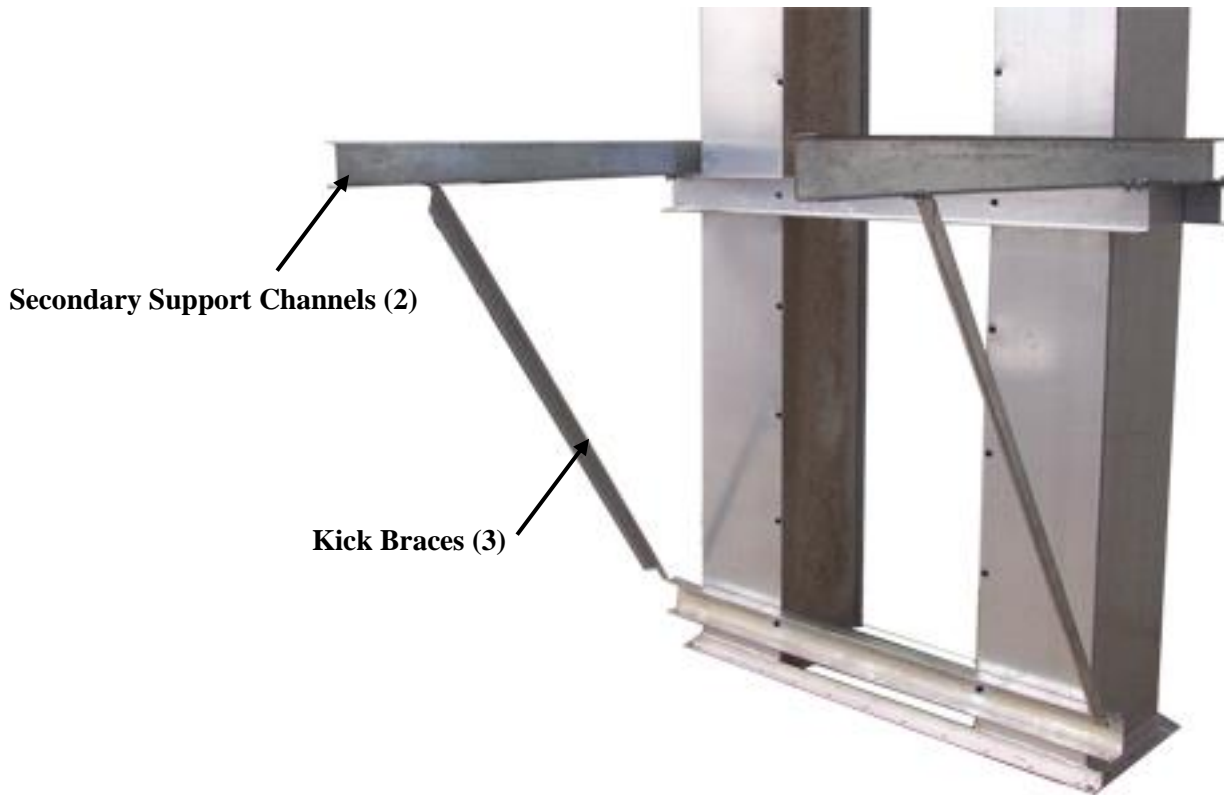
Step #1

When standing a Bucket Elevator in two or more sections, your Rest Platform should be mounted in an adequate position to mount the upper section of trunking (just below the joint). To assemble your rest platform start by bolting the Primary Support Channels (1) on both sides of the elevator trunking at the desired height of the rest platform. Also bolt the third Primary Support Channel (1) in the fourth set of holes down from the original support channels on the ladder side, as shown in the diagram.

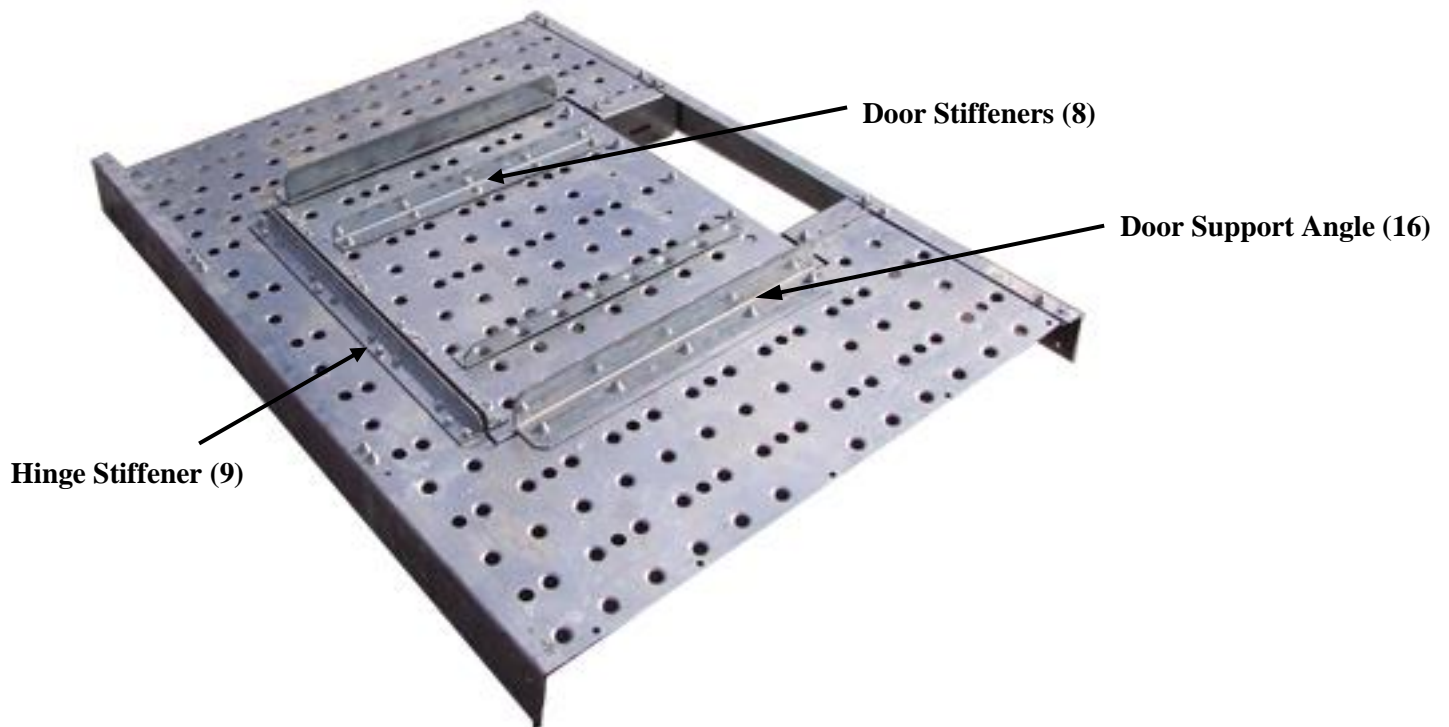
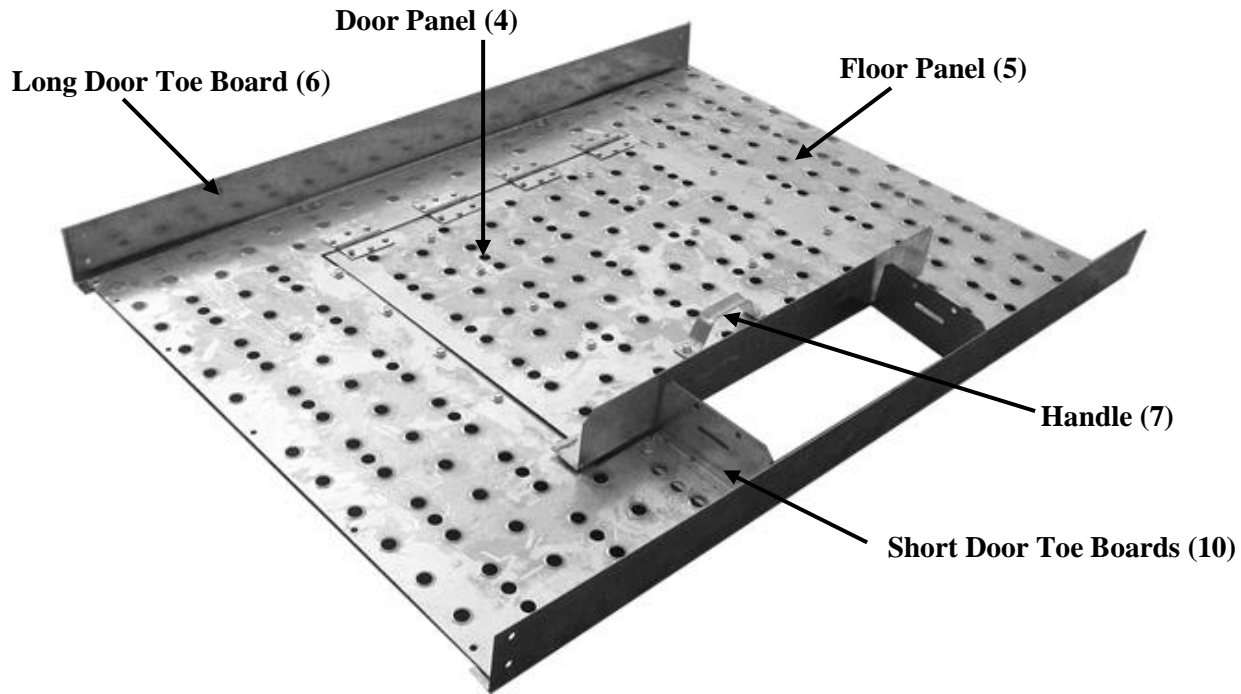


Step #2

Now bolt the (2) Secondary Support Channels (2) to the top of the primary support channels. The (2) Kick Braces (3) can also be mounted at this stage. They mount from the second bolt in on the Secondary Support Channel to the upper lip of the Primary Support Channel. Note: the kick brace ends require approximately a 45° bend to properly fit.

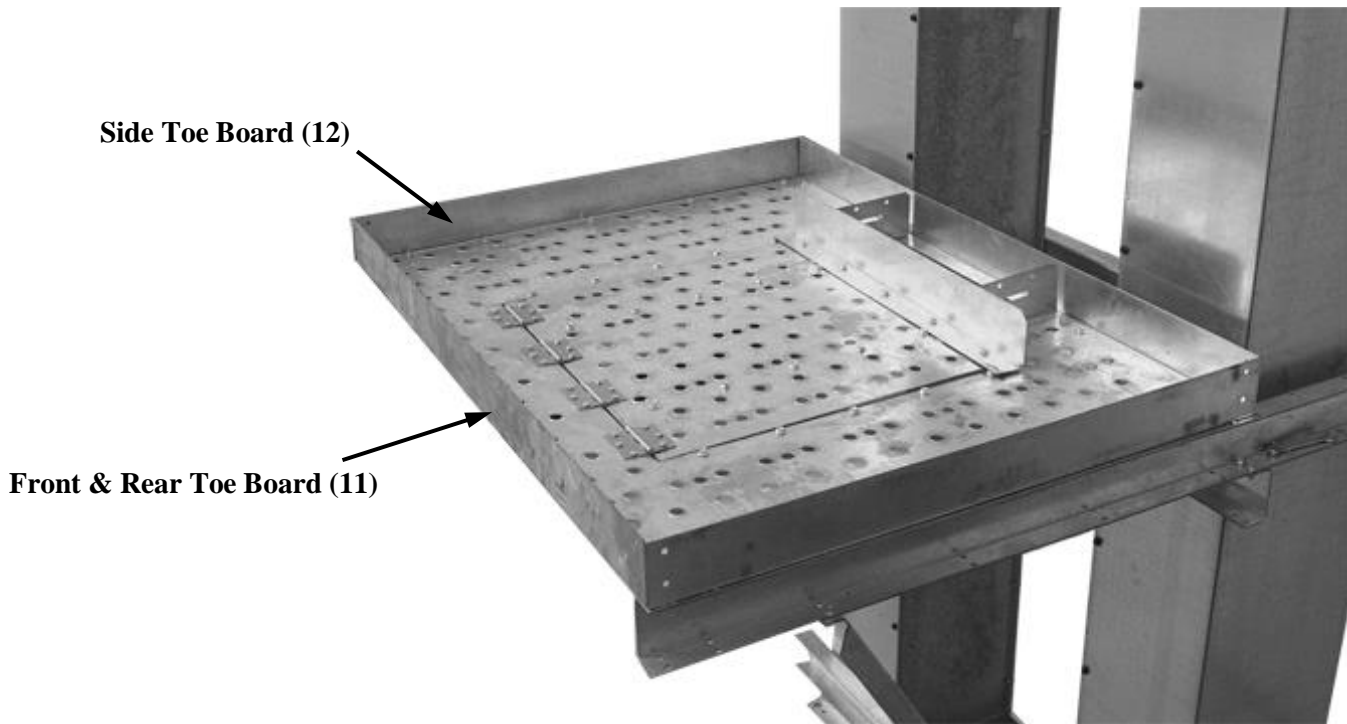
**Step #3**

Now locate the Door Panel (4), and Floor Panel (5). The Door Panel will require 4 hinges, the Long Door Toe Board (6), and Handle (7) mounted to the top. Two Door Stiffeners (8), and a Hinge Stiffener (9) will bolt to the underside of the door. The floor requires, the door assembly to be mounted to the top. A Hinge Stiffener (9), two Door Toe Boards (short) (10), and two Front/Rear Toe Boards (11) are bolted to the underside of the Main Floor Panel (if ladder is installed the rear toe board has to be mounted after floor is in place). Note: hinges are to be fastened using $\frac{1}{4}$ " x 1" bolts, nuts, and lock washers.



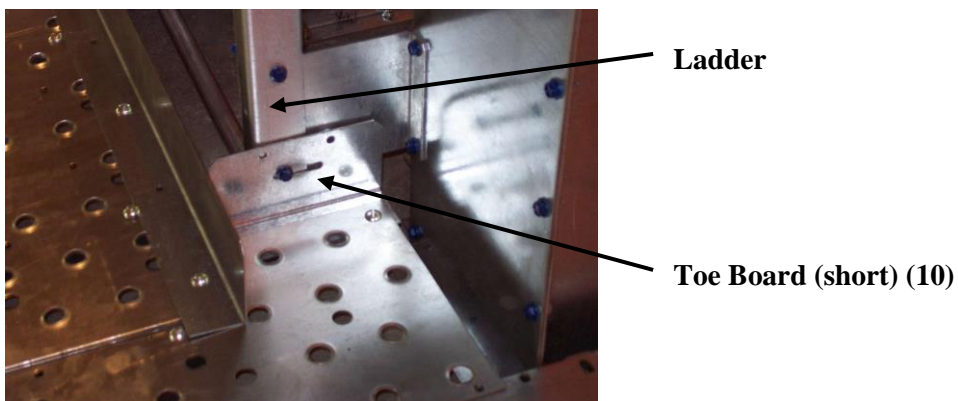
Step #4

Now place the Floor Section on the secondary supports and bolt all four corners securely to insure it stays in place. The two Side Toe Boards (12) can also be installed at this stage beneath the floor section on the secondary supports as shown. All floor bolts can now be installed.



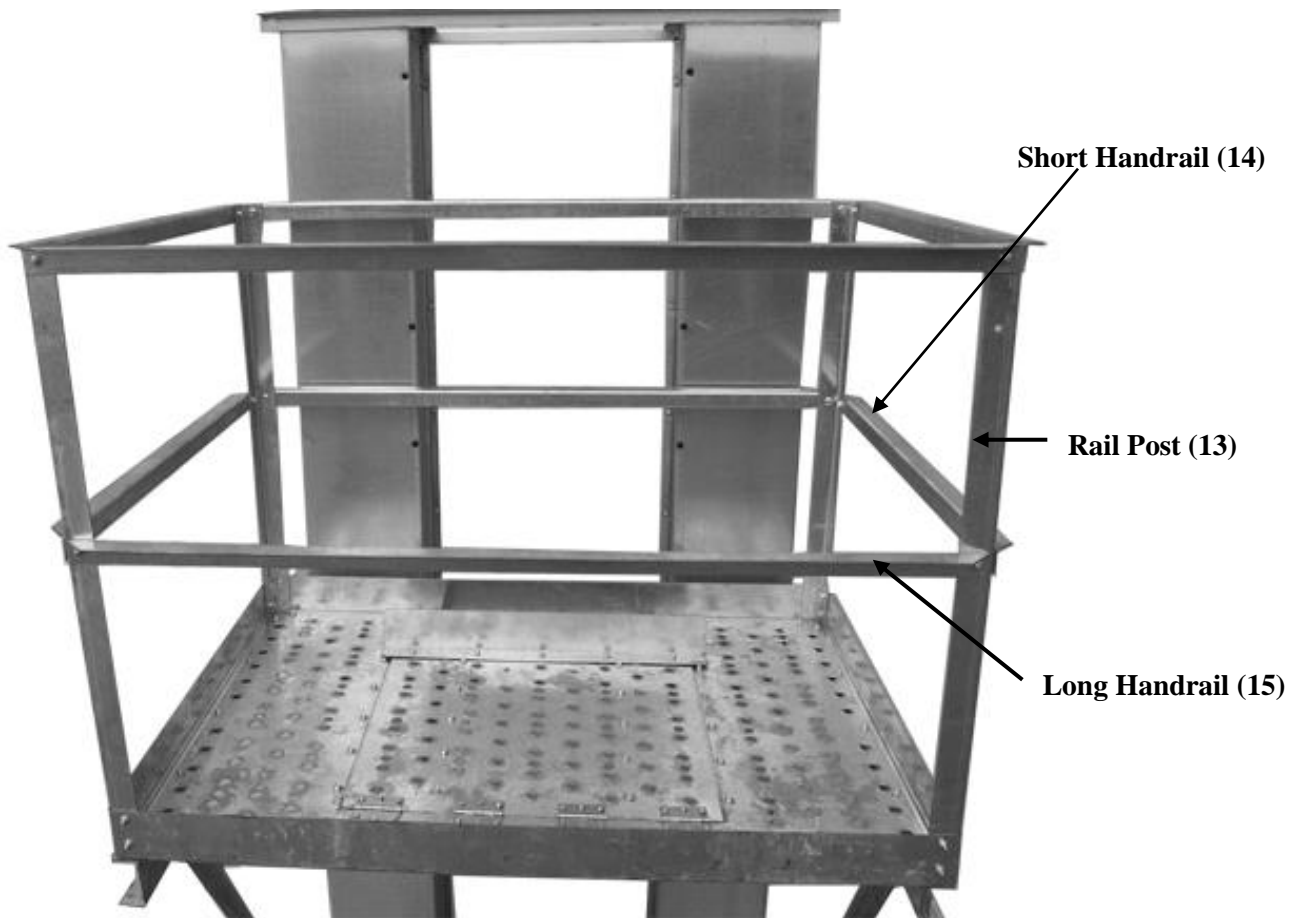
Step #5

With the Door Panel & Toe Boards in place the ladder will need to be drilled and bolted to the short door toe boards on each side using (2) $5/16'' \times 3/4''$ bolts.



Step# 6

Install 4 Rail Posts (13) at the 4 corners of the platform, attach the (4) Short Handrails (14) to the Posts then attach the (4) Long Handrails (15) to the Posts. Your platform is now finished and should resemble this.





Owner's Installation Manual

36" Small Work Platform

NOTE:

The two kick braces will bolt to the floor supports from step 8. Bolt the braces so that they angle in toward the trunking, thus supporting the large floor panel. The other end of the braces will bolt to the trunking by removing and re-bolting at the hemlock

Use truss slot bolts for all floor panel connections.

Step #1

To assemble your small work platform start by mounting the (2) primary support channels to the trunk using the existing trunk hemlock bolts. Keep in mind that the top of the primary support channels should be approximately 6' below the distributor or valve. This distance allows ample room so that the handrails do not interfere with the downspouts.



Primary Support Channels (1)

Step #2

Now place the floor panel on top of the primary support channels and bolt using the $\frac{5}{16}$ " X $\frac{3}{4}$ " button head bolts. The (2) 1- $\frac{1}{2}$ " X 1 $\frac{1}{2}$ " kick brace angles can also be attached now. The kick brace angles bolt from the front corners of the floor panel and extend down to the existing bolts in the trunk hemlock. The ends of the brace angles will need to be bent slightly to allow the braces to bolt flat.



Floor Panel (2)

Step #3

Now attach the (6) 2"X 2" rail posts to the floor panel. (1) rail post goes in each corner. The remaining (2) go along the backside of the platform near the center. The 1 1/2" X 1 1/2" handrail angles can also be added using 5/16" X 3/4" hex head bolts. Do not put handrails on the rear-ladder side of the platform.

Safety Bar
(Do not put handrails in this area)



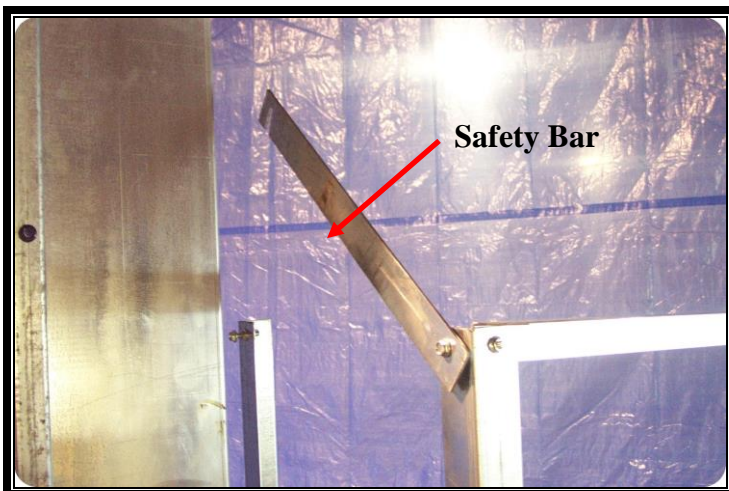
Handrail (6)

Rail Post

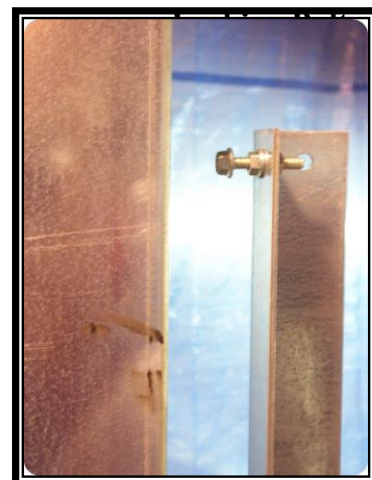
Kick Brace

Step # 4

Finally, on the rear ladder side of the platform attach the flat safety bar. This allows access onto and off of the platform. The safety bar needs to be able to pivot. To accomplish this, the 5/16" X 1 1/4" pivot bolt needs to be double nutted as well as the locking bolt as shown below.



Safety Bar



Your platform is now complete and should resemble the picture below.



To access the platform from the leg ladder you must step out of the safety cage and across to the platform. You may want to remove or modify 1 or 2 of the vertical cage straps in this area to make access easier. For safety reasons we do **not** recommend removing all of the safety cage in this area.



Owner's Installation Manual

36" Large Work Platform

The Lambton Conveyor Work Platform is intended to be mounted approximately 6' below the elevator distributor to the trunking and should be used for servicing the distributor only. Due to various layouts it may be necessary to mount the platform lower in order to miss the distributor valves and spouting. It is the assemblers, and users responsibility to ensure safe working conditions in any situation. In order to maintain a safe working environment, ladders and cages may be necessary additions to the platform. Due to the many applications a kit is not available. It is also the owner's responsibility to ensure unauthorized personnel are **not** able to access these assemblies.

Parts List

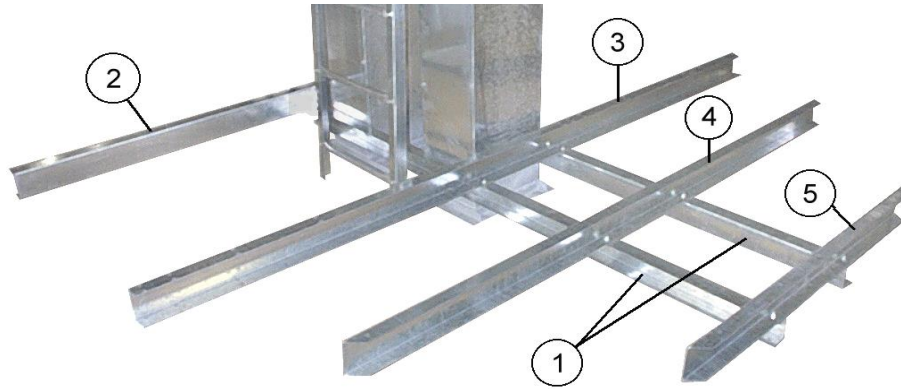
Part	#	Part #	Description	Length	Quantity
12x7 Large Work Platform		mruworkp.036			1
Primary Support Channel	1	uworkp36.000	C-Channel	105 3/4"	2
Back Secondary Support	2	uworkp36.017	C-Channel	63 5/8"	1
Rear Secondary Support	3	uworkp36.020	C-Channel	104"	1
Middle Secondary Support	4	uworkp36.002	C-Channel	83 13/16"	1
Front Secondary Support	5	uworkp36.001	C-Channel	43 3/8"	1
Floor / Door Support Angles	6	uworkp36.011	Angle	41 3/8"	2
Rear Ladder Toe Board	7	uworkp36.009	Angle	64"	1
Floor Panel	8	uservp36.004	Flat Sheet	63 3/4" x 41"	1
Door-side Toe Board	9	uworkp36.010	Angle	41 1/4"	1
Door-front Toe Board	10	uworkp36.008	Angle	73 1/4"	1
Ladder Toe Board	11	uworkp36.030	Angle	7 3/4"	2
Door Panel	12	uservp36.004	Flat Sheet	26 3/4" x 28 1/2"	1
Door Toe Board	13	uworkp36.030	Angle	31"	1
Door Stiffener	14	uworkp36.032	Angle	23"	2
Hinge Stiffeners	15	uworkp36.031	Angle	25 5/8"	2
Work Area Floor Panel	16	uworkp36.029	Flat Sheet	103" x 40 3/8"	1
Rear Work Area Toe Board	17	uworkp36.006	Angle	62 3/8"	1
Front Angle Toe Board	18	uworkp36.005	Angle	45 3/16"	2
Front Work Area Toe Board	19	uworkp36.003	Angle	40 1/8"	1
Short Work Area Toe Board	19a	uworkp36.004	Angle	9 1/4"	1
Railing Post	20	uworkp36.028	Angle	42"	8
Door-side Handrail	21	uworkp36.014	Angle	40 1/2"	2
Rear Work Area Handrail	22	uworkp36.016	Angle	63 5/16"	2
Short Work Area Handrail	23	uworkp36.027	Angle	8 13/16"	2
Front Angle Handrail	24	uworkp36.025	Angle	44 5/8"	4
Front Work Area Handrail	25	uworkp36.026	Angle	39 1/2"	2
Door-front Handrail	26	uworkp36.012	Angle	72 1/2"	2
Rear Ladder Handrail	27	uworkp36.015	Angle	61 3/4"	2
Kick Brace (work side)	28	uworkp36.019	Angle	81 9/16"	2
Kick Brace (door side)	29	uworkp36.018	Angle	58 9/16"	2
Kick Brace Support Channel	30	uworkp36.013	C-Channel	65 3/4"	1
5/16" x 3/4" hex bolts					90
5/16" x 3/4" truss slot (button head) bolts	Use Grade 8 strength bolts Only Torque to 120 ft. lbs minimum				100
5/16" hex nuts					190
Hinge kit					1

NOTE: Use truss slot bolts for all floor panel connections.

This platform includes two half "Flared (Starter) cage hoops" which are meant to start the safety cage continuing up the leg.

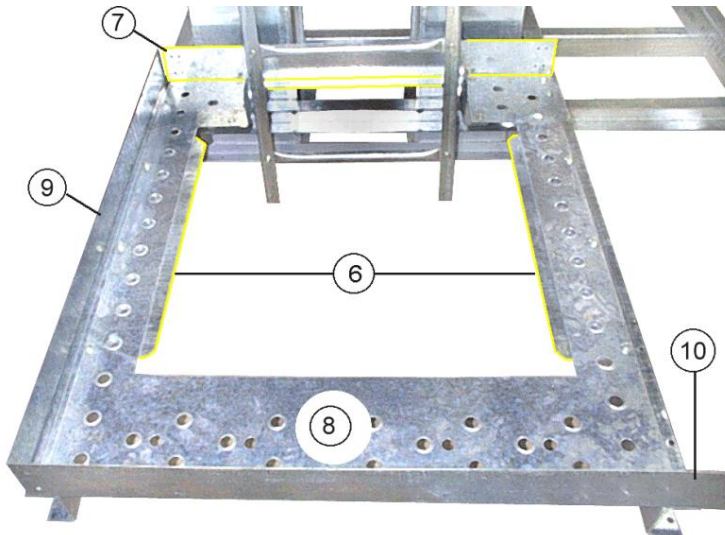
Step #1

Bolt the Primary Support Channels (1) to the trunking at the desired height of the platform using the existing bolts. Now bolt the Back Secondary Support Channel (2), Rear Secondary Support Channel (3), Middle Secondary Support Channel (4), and Front Secondary Support Channel (5) into place as shown on the diagram.



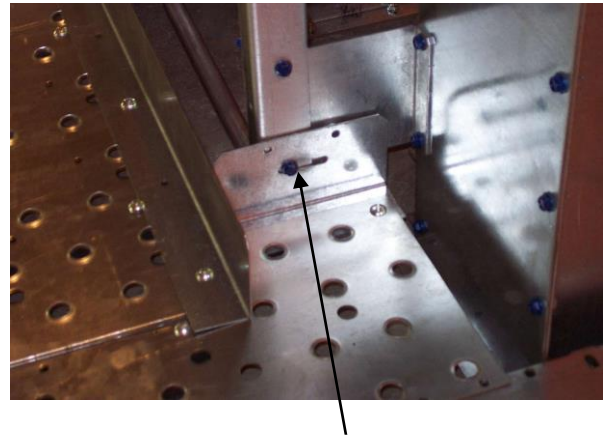
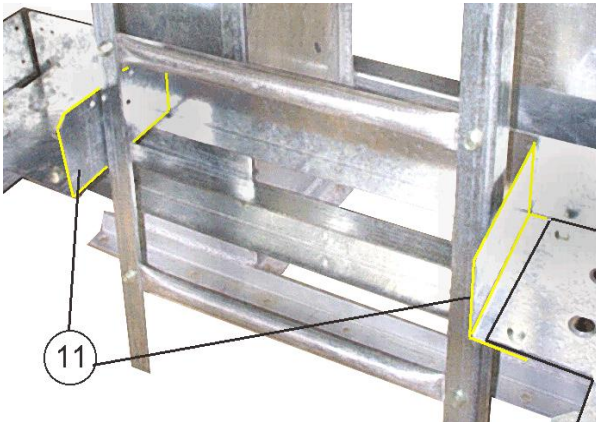
Step #2

Locate the Rear Ladder Toe Board (7) and position behind the ladder. Place the Floor Panel (8) on the secondary supports along with the Door Side Toe Board (9), and Door Front Toe Board (10). The toe boards should be mounted underneath the flooring but on top of the supports, and bolted into place. The Floor/Door Support Angles (6) can also be mounted on the underside of the flooring extending from the front to rear of the flooring.



Step #3

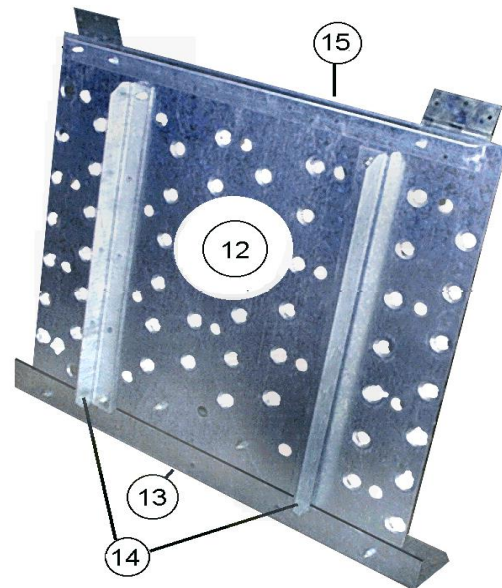
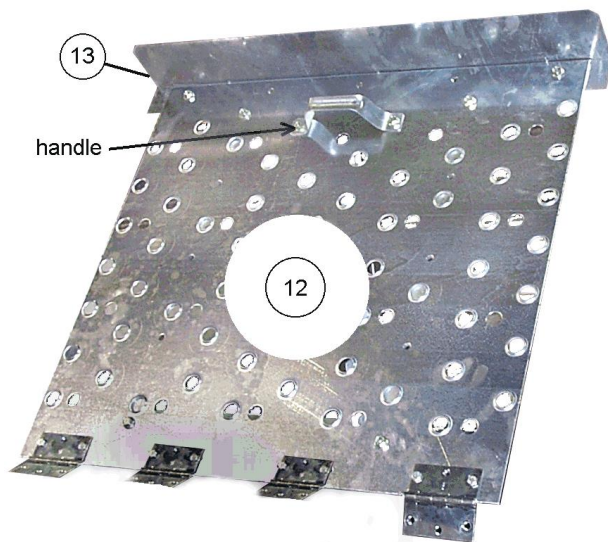
Locate the Ladder Toe Boards (11) and position under the floor panel but on top of the rear ladder toe board. Bolting through the flooring and to the ladder. Note: bolting to the ladder will require drilling two 5/16 holes.



Drill & Bolt Here

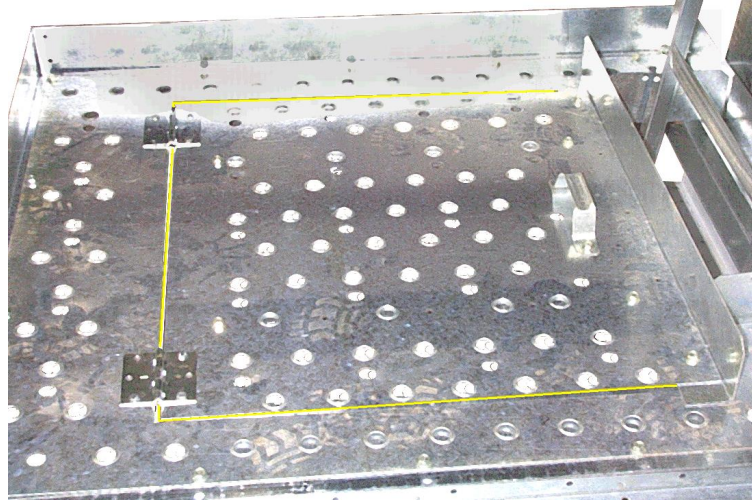
Step #4

Now locate the Door Panel (12) bolting the Door Toe Board (13), Handle and Hinges to the Top. The Door Supports (14) and Hinge Stiffener (15) get bolted to the bottom. Note: use 1/4" x 1" bolts, locks and nuts to fasten hinges into place.

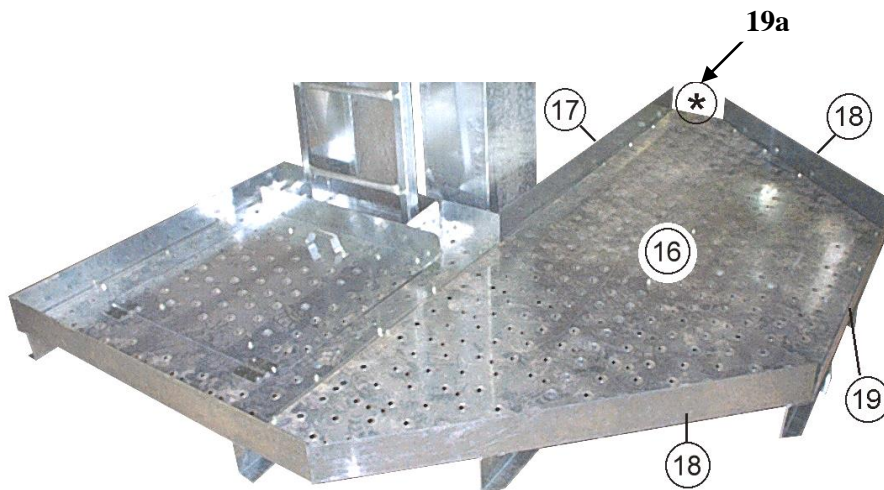


Step #5

Position the door assembly in the doorframe bolting the hinges down through the floor while installing the second Hinge Stiffener (15) to the underside before hand. Fasten using 1/4" x 1" bolts, locks, and nuts.

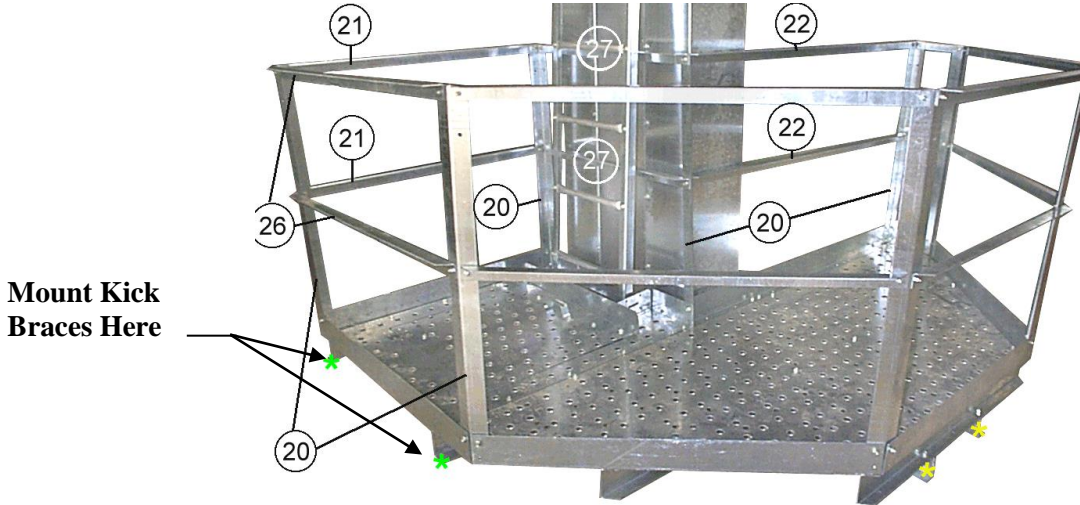
**Step #6**

Now locate the Work Area Floor Panel (16) and place on the support channels as shown. Under the floor position the Rear Work Area Toe Board (17), the (2) Front Angle Toe Boards (18), and the Front Work Area Toe Board (19). After bolting the floor panel on all edges the Short Work Area Toe Board (19a) can be installed.



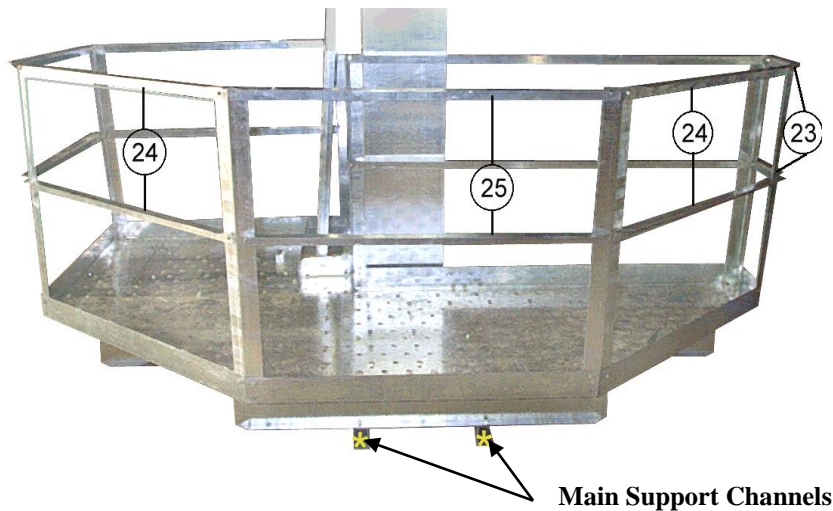
Step #7

Now locate the eight Railing Uprights (20) (4 have a 45° bend & 4 have a 90° bend) and fasten at all corners of the platform. Proceed to bolt the two Door Side Handrails (21), two Rear Work Area Handrails (22), two Short Work Area Handrails (23), four Front Angle Handrails (24), two Front Work Area Handrails (25), two Door-Front Handrails (26), and two Rear Ladder Handrails (27) into place with the angle facing in as shown.



Step #8

The Door Side Kick Braces (29) can be installed by mounting the Kick Brace Support (30) to the trunking in the fourth set of holes down from the platform (use the hemlock bolts), the kick braces can then be mounted to the marked channels, and the ends of the support channel.



Step #9

Now bolt the Work Side Kick Braces (28) to the main support channels then extend down and bolt to the hemlock bolts in the trunking (approx. 5th hole down).

Caution: Do not use handrails as a step for accessing the distributor at any time.



Owner's Installation Manual

36" Head Service Platform

The Lambton Conveyor Head Service Platform is intended to be mounted directly to the elevator head in order to service and repair problems. The service platform is not intended to be used anywhere else on the elevator. It is the owner's responsibility to ensure all unauthorized personnel are kept clear of these assemblies.

Parts List

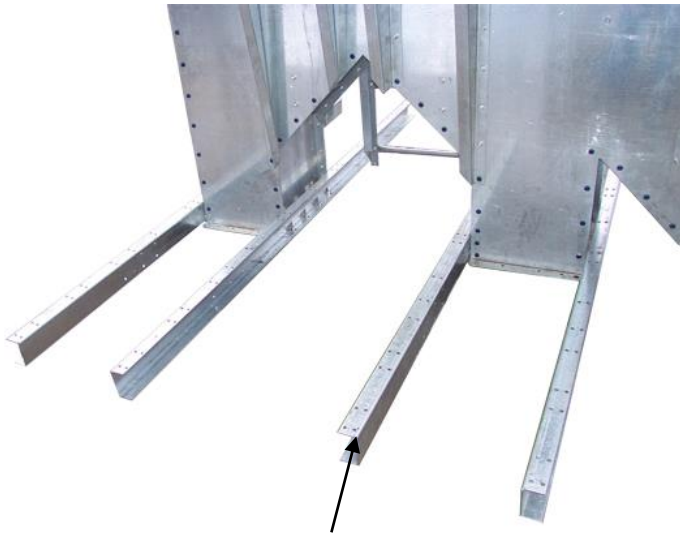
Part	#	Part#	Description	Length	Quantity
12x7 Head Service Platform		uservp.036			
Main Channel	1	uservp36.000	C-Channel	104"	4
Top Motor Mount	2	uservp36.012	Plate / Channel	29 5/8" x 26"	1
Bottom Motor Mount (1)	3	uservp36.112	Plate / Channel	29 5/8" x 18"	1
Bottom Motor Mount (2)	3	uservp36.212	Plate/Channel	29 5/8"x17 13/16	1
Doorframe	4	uservp36.m04	Flat Sheet	120" x 48"	1
Door Panel	5	uservp36.004-2	Flat Sheet	29" x 26 7/8"	1
Handle	6	gla-handle	NA	NA	1
Long Door Toe Board	7	uservp16.008	Angle	31"	1
Door Stiffeners	8	uservp16.004	Angle	23"	2
Hinge Stiffeners	9	uservp36.007	Angle	25 5/8"	2
Door Toe Boards (short)	10	uservp16.008	Angle	7 3/4"	2
Side Toe Boards	11	uservp36.001	Angle	101 7/8"	2
Front / Rear Toe Board	12	uservp36.002	Angle	104 3/16"	2
Floor Panel (drive side)	13	uservp36.m05	Flat Sheet	120" x 48"	1
Inner Toe Boards	14	uservp36.003	Angle	16 3/8"	4
Floor Stiffeners	15	uservp16.007	Angle	37 1/4"	2
Floor Panel (rear)	16	uservp24.m03	Flat Sheet	103" x 37"	1
Torque Arm Brackets	17	uhead36.039	Angle	10"	2
Torque Arm Channel	18	uhead36.040	C-Channel	37 7/8"	1
Rail Posts	19	uservp16.014	Angle	42"	7
Handrail (front)	20	uservp36.010	Angle	35 7/8"	4
Handrail (side)	21	uservp36.009	Angle	101 1/4"	4
Handrail (rear)	22	uservp36.008	Angle	102 3/4"	2
Platform Kick Braces	23	uservp36.011	Angle	80 11/16"	2
Motor Mount Kick Braces	24A	uservp36.013	Angle	33 1/2"	2
Motor Mount Kick Braces	24B	uservp36.013	Angle	14"	2
Guard Bracket (top) (25)	Not shown	uservp36.018	Angle	18"	1
Guard Bracket (bottom) (26)	Not shown	uservp36.017	Angle	8"	1
Access Cover (27)	Not shown	uservp36.008	Flat Sheet	22" x 8 1/2"	1
5/16" x 3/4" hex head bolts	Use Grade 8 Strength Bolts Only Torque to 120 ft. lbs minimum				100
5/16" truss slot (button head) bolts					140
5/16" nuts					240
Hinge kit					1

NOTE: Use truss slot bolts for all floor panel connections.

Step #1

With the head sitting on a solid level area, locate the four Main Support Channels (1) and mount as shown. The motor mount can also be assembled and installed at this stage. Locate the Top Motor Mount Channel (2) and the two Bottom Motor Mount Channels (3). The two small plates slide inside the large plate and bolt to the sides. The motor mount can be positioned as shown but not bolted at this stage.

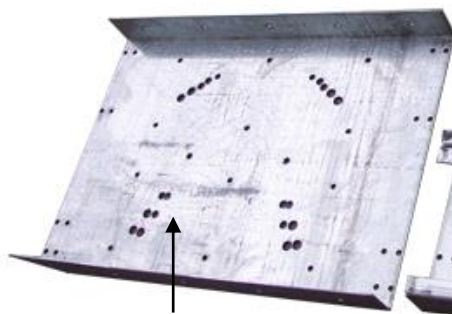
Note: ensure motor mount holes are positioned as shown.



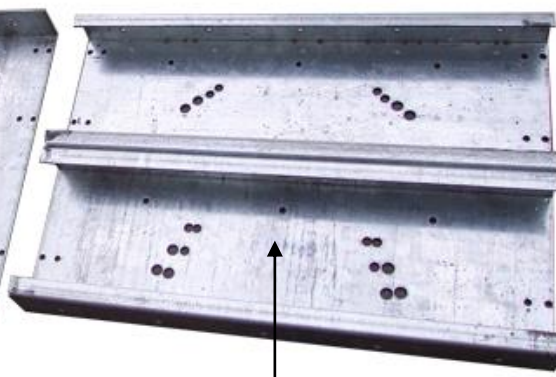
Primary Support Channels (1)



Motor Mount in Place



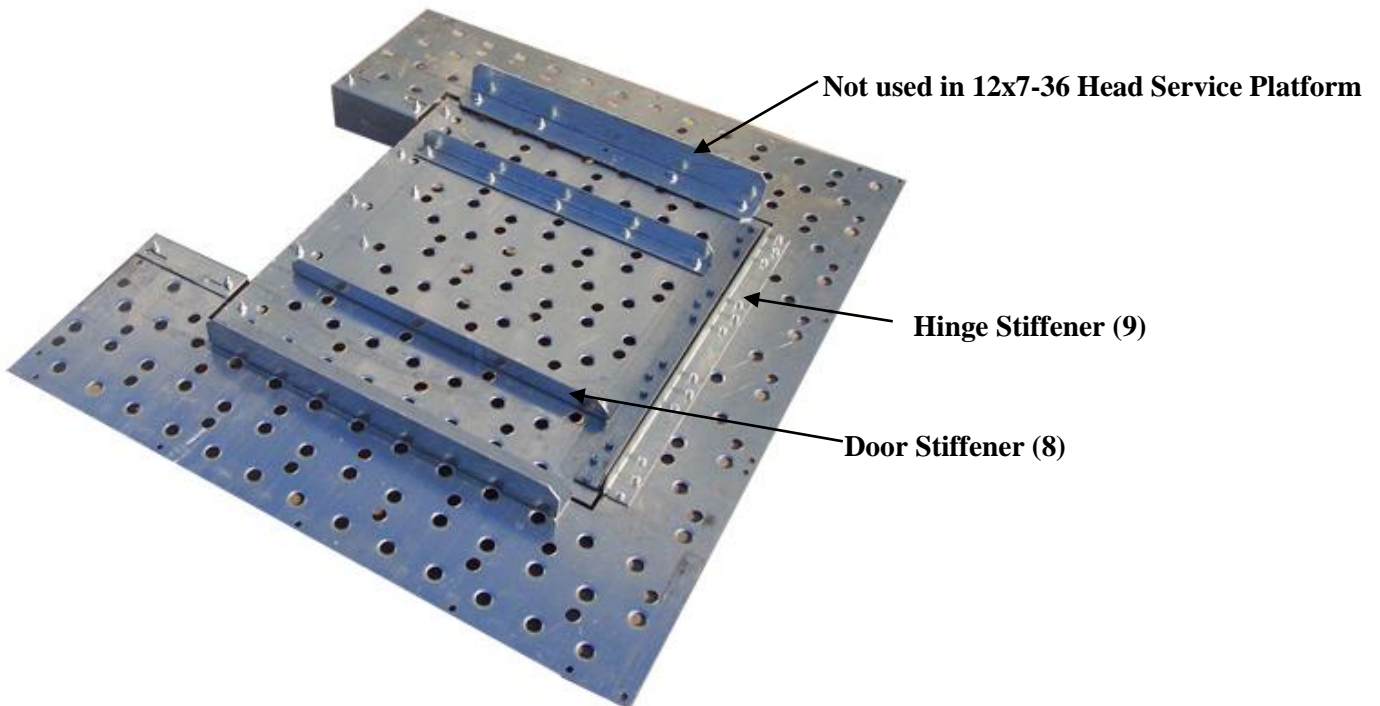
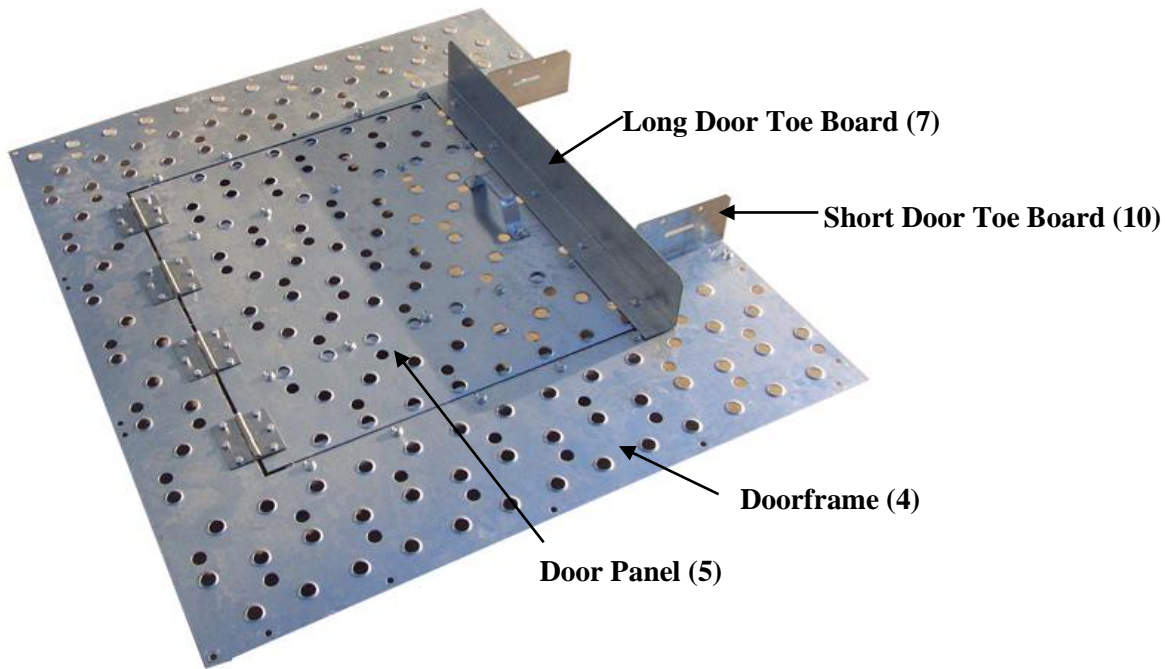
Top Motor Mount Channel (2)



Bottom Motor Mount Channels (3)

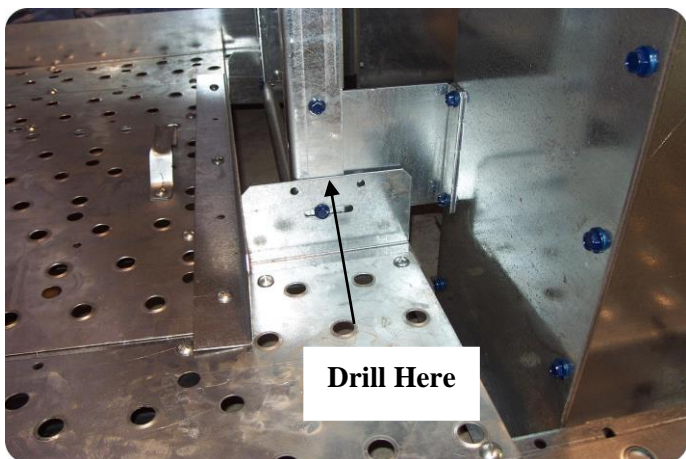
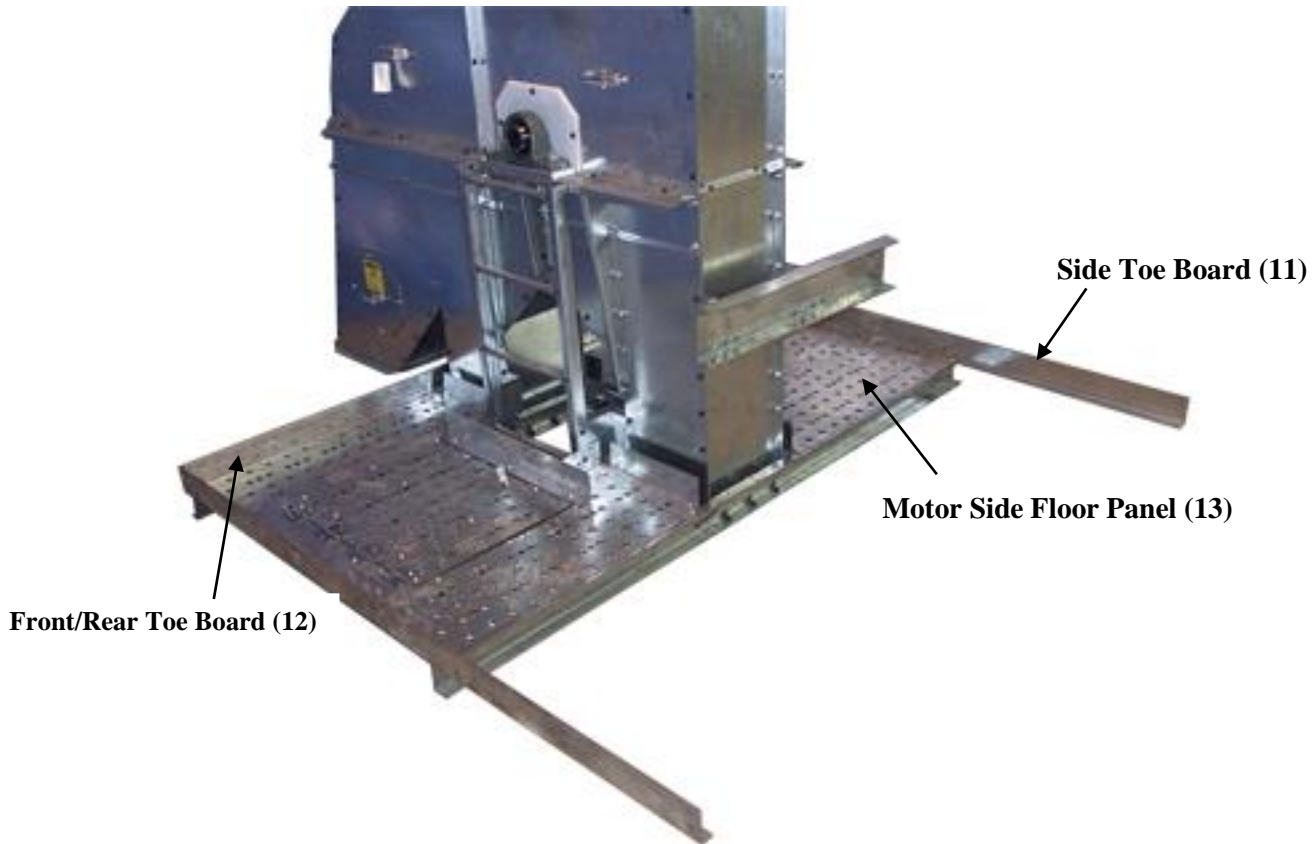
Step #2

Next locate the Doorframe (4), and Door Panel (5). The door panel will require the Handle (6), Long Door Toe Board (7), and four hinges mounted to the top. Mounted to the bottom are two Door Stiffeners (8), and a Hinge Stiffener (9). The Doorframe gets two Short Door Toe Boards (10) and the remaining Hinge Stiffener (9) mounted to the bottom while the door is mounted to the top. Note: the hinges are fastened using $\frac{1}{4}$ " x 1" bolts while all others are fastened using $\frac{5}{16}$ " x $\frac{3}{4}$ " button head bolts.



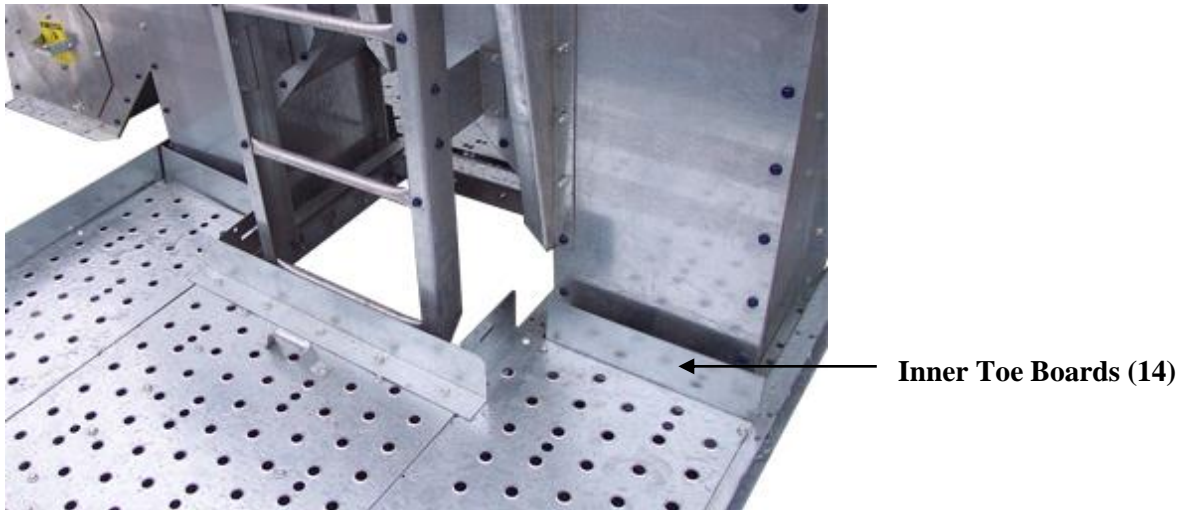
Step #3

Now the two Side Toe Boards (11), one Front/Rear Toe Board (12), the doorframe, and Motor Side Floor Panel (13) should all be mounted to the main support channels using 5/16" x 3/4" button head bolts. The motor mount can also be bolted into place during this step. The ladder will need to be drilled using a 5/16" bit in order for the short door toe boards to bolt to it.



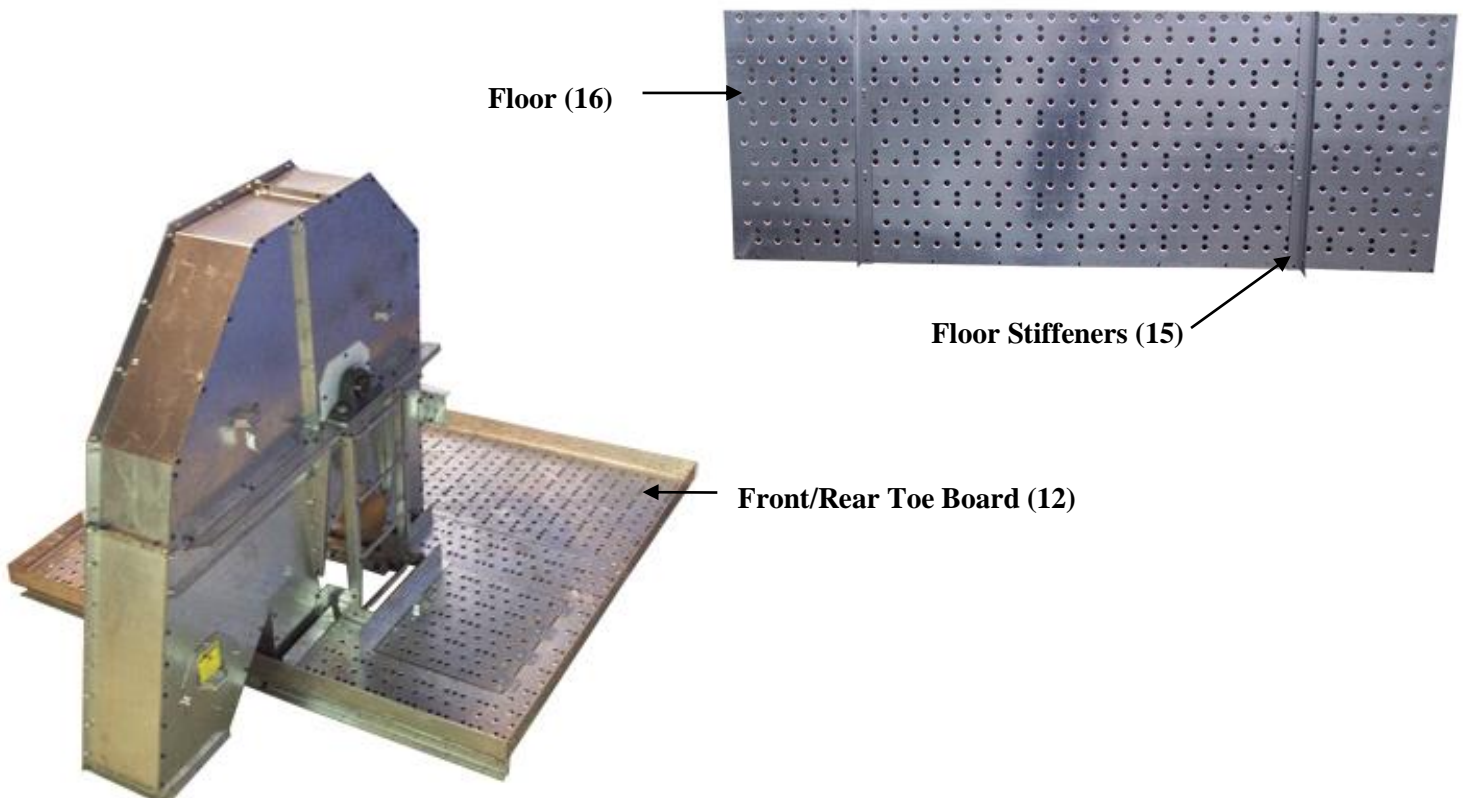
Step #4

Now position the four Inner Toe Boards (14) into place at each side of the trunking as shown in the diagram using 5/16" x 3/4" button head bolts fasten.



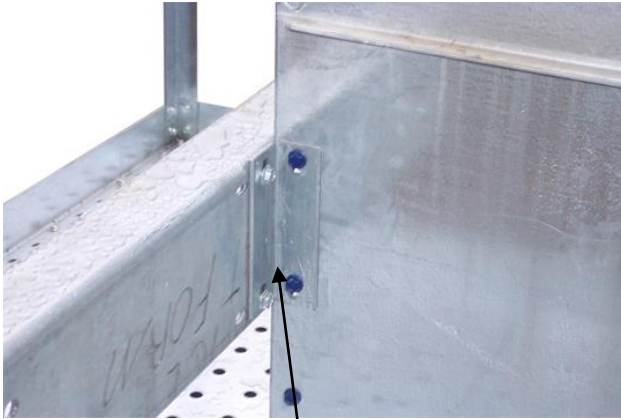
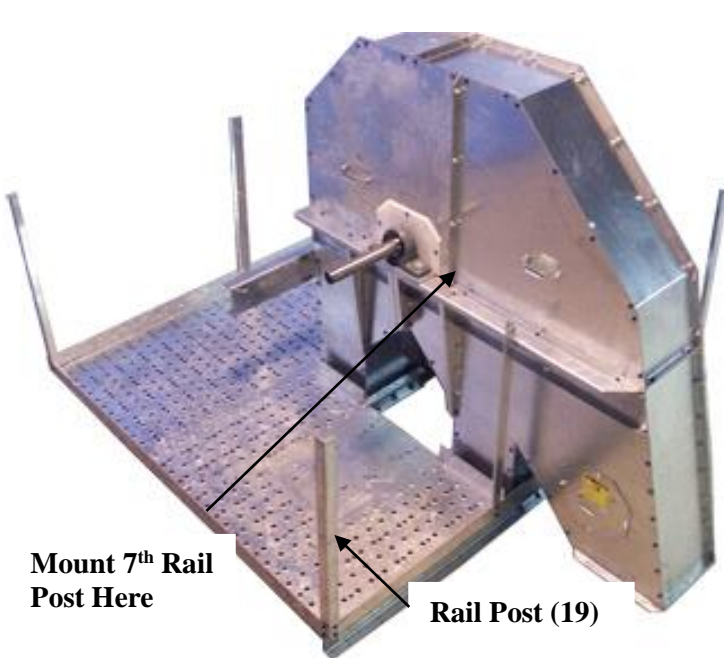
Step #5

Now locate the two Floor Stiffeners (15) and bolt to the underside of the Rear Floor Panel (16). The floor panel and remaining Front/Rear Toe Board (12) can now be set into position and fastened using 5/16" x 3/4" button head bolts all around.



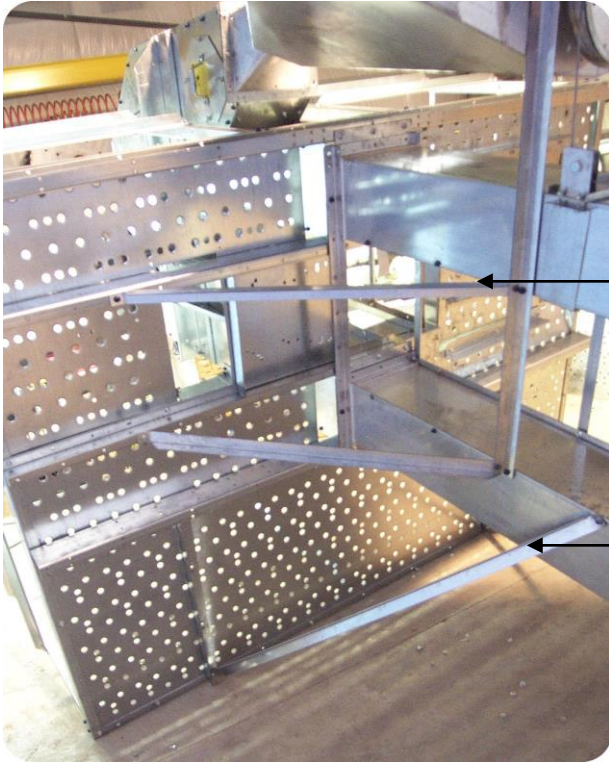
Step #6

Now locate the Torque Arm Brackets (17) and Torque Arm Channel (18) the brackets will mount to the first set of bolts down on the back of the head, once in place the channel can be mounted. The seven Rail Posts (19) can now be bolted into place (six around the outside one to trunking on motor side). All handrails can be mounted in this step with angles facing in using 5/16" x 3/4" hex head bolts. **Note:** rail posts are to be fastened to main bearing channels of head where applicable.

**Torque Arm Brackets (17)****Torque Arm (18)****Mount 7th Rail Post Here****Rail Post (19)**

Step #7

With all bolts in the platform tightened, the head will need to be tipped back and attached to a piece of trunking in order to install the kick braces. Locate the two Platform Kick Braces (23), mount to the fourth hole in on the rear toe board and extend to the fourth set of hemlock bolts down from the head on the trunking. Now locate the two Motor Mount Kick Braces (24) and attach to the fourth hole in on the motor mount channels then extend to the third set of holes down from the head on the trunking.



Motor Mount Kick Brace (24)

Platform Kick Brace (23)

Step #8

The Motor access cover is fastened using 4 self-tapping screws (included). Refer to the Reducer Drive assembly section for information on guard bracket mounting points.

