



Designed for you.
Built for you. Since 1965.

Dual Inlet Pendulum
Installers Manual

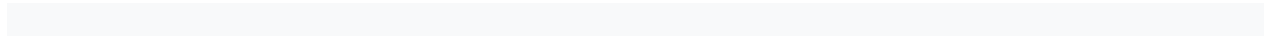




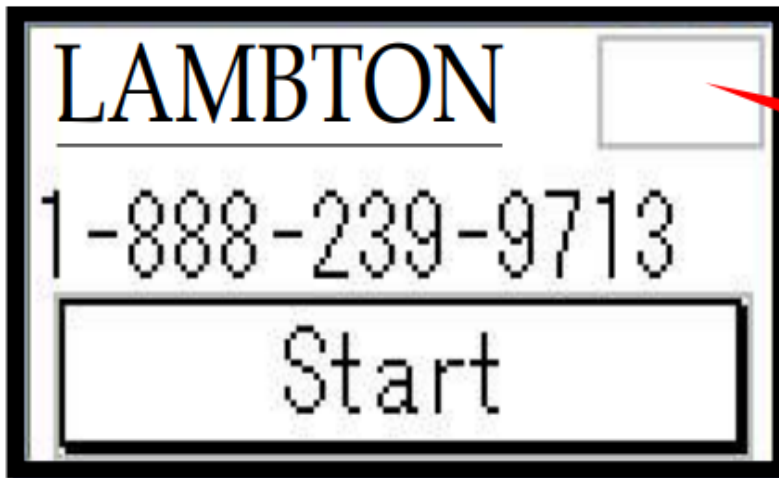
Table of Contents

Installers Manual

Invisible Button	P1
Inlet A Set Up	P2
Prox Set Up	P2
Motor Set Up	P2
Encoder Set Up	P3
Inlet B Set Up	P4
Cross Wire Detection	P5

Invisible Button - Set up Mode

Installers Manual



Invisible Button

Press here to get into
the set up mode

This screen is the first screen that is displayed when the control unit is energized.

Invisible Button

In the top right corner press the screen this will take you into the set up mode.

A red screen will appear then select which Inlet you wish to set up

P1

Inlet A Set Up Installers Manual

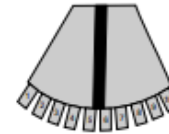
Push "Set A" to be set up Inlet A



Step 1 Prox Set up



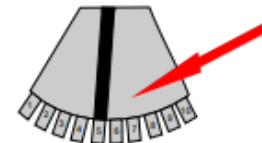
Move the arm to the middle over the home position prox, when this occurs the "OFF" button will switch to "ON"
If not see prox setup page



Then move to next step

Step 2 Motor Set up Press REV the arm should move towards Port 1

Note: If the arm is moving in the wrong direction, cross motor leads. Then repeat Step 2



If OK move to next step

P2

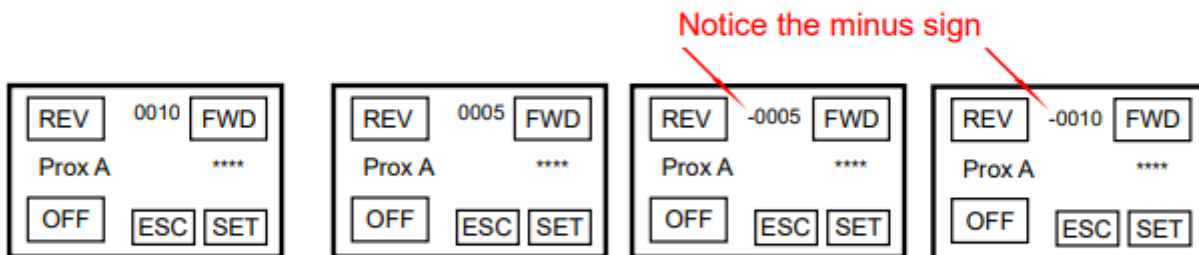
Inlet A Set Up Installers Manual

Step 3 Encoder Set up When pressing REV the Encoder numbers should be counting down
If OK move to next step

(If the Encoder Value is negative the Encoder Value will appear to be going up) See Fig. below

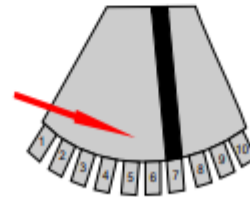
Note: If the Encoder values are counting in the wrong direction, cross wires X0 and X1
Then repeat Step 3

Example the Encoder values below are counting down but appear to be increasing



Step 4 Push and hold FWD move the arm to Port 7 (should pass the home position prox)

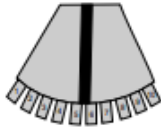
Now see test page



Do not push the **Set** button use the **ESC**

P3

Inlet B Set Up Installers Manual



Step 1

Prox Set up

Move the arm to the middle over the home position prox, when this occurs the "OFF" button will switch to "ON"



If not see prox setup page

Then move to next step

Step 2

Motor Set up

Press REV the arm should move towards Port 1

Note: If the arm is moving in the wrong direction, cross motor leads. Then repeat Step 2

If OK move to next step

Step 3

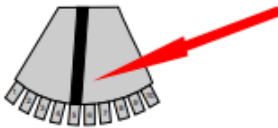
Encoder Set up

When pressing REV the Encoder numbers should be counting down

If OK move to next step

Please look for the minus sign

(If the Encoder Value is negative the Encoder Value will appear to be going up) See Fig below



Note: If the Encoder values are counting in the wrong direction, cross wires X3 and X4 Then repeat Step 3

Example the Encoder values below are counting down but appear to be increasing
Please look for the minus sign



Do not push the **Set** button use the **ESC**

P4

Cross Wire Detection

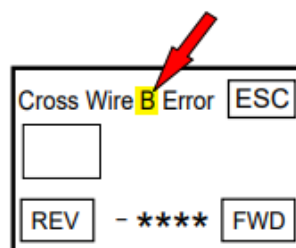
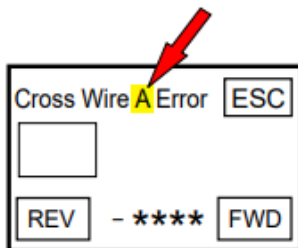
When you see this screen the motor or the encoder has been wired incorrectly.

Please notice if Port A or Port B error

Refer to pages

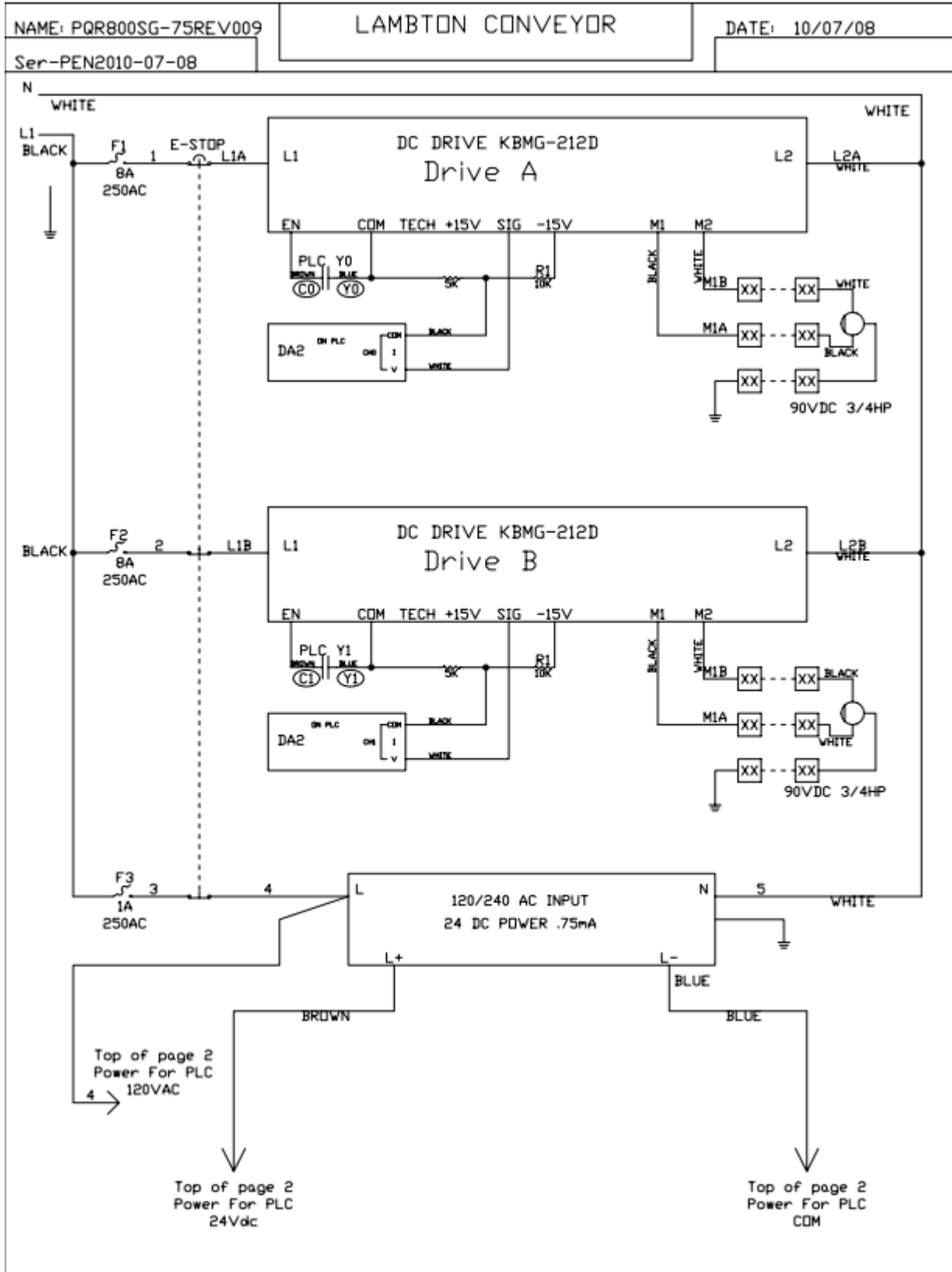
P2 - Verifying Motor Direction

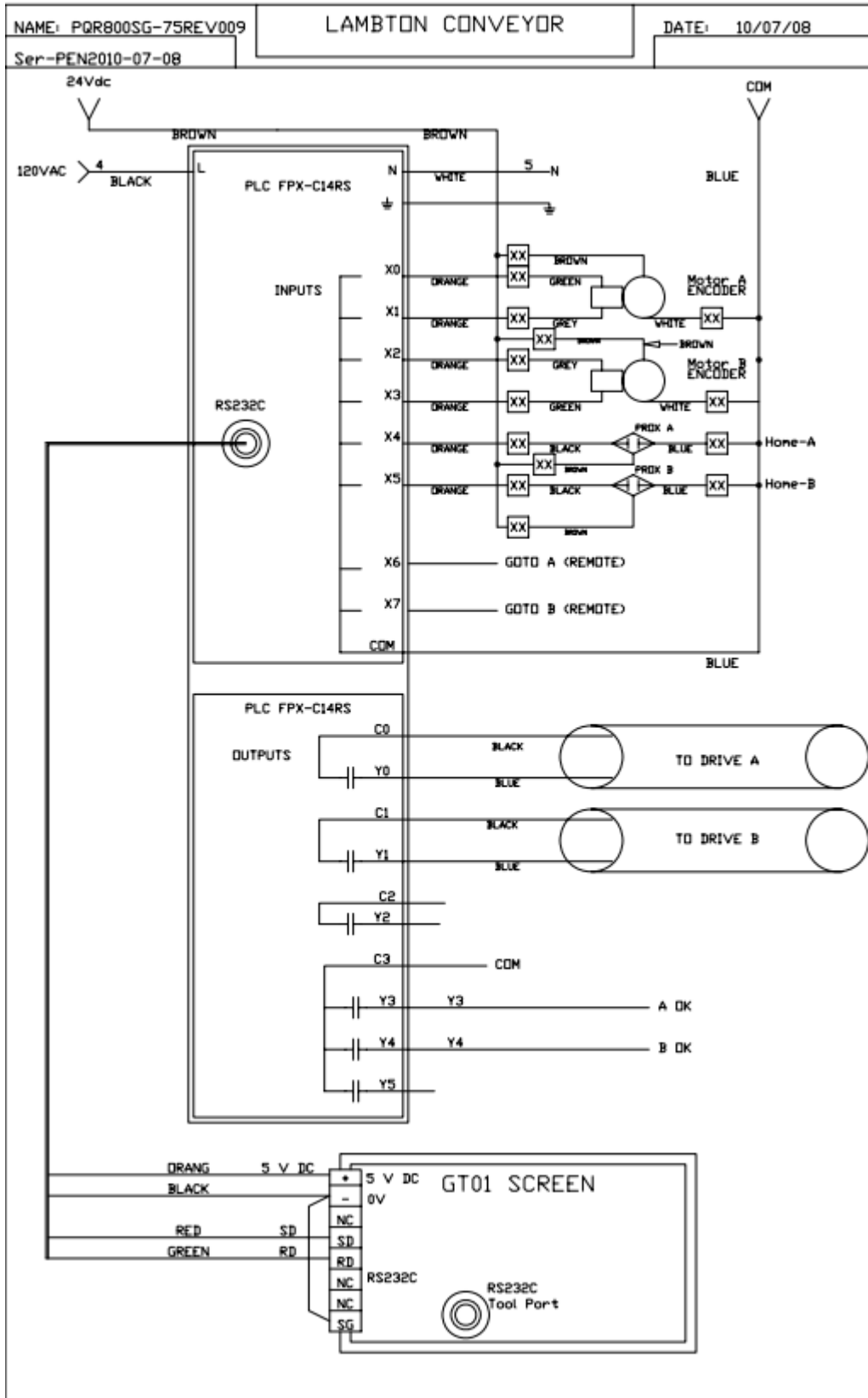
P3 - Verifying Encoder Direction





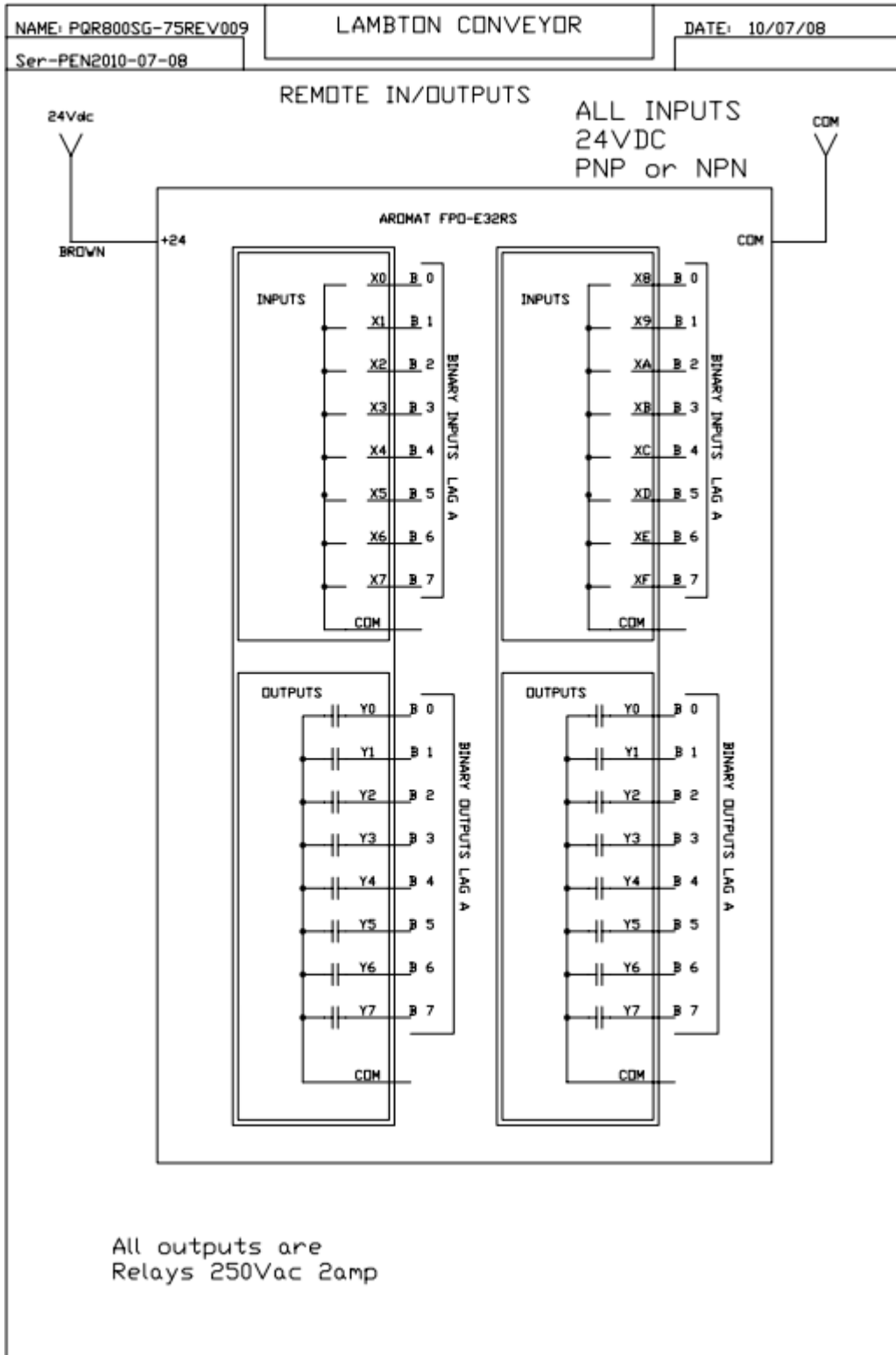
Designed for you.
Built for you. Since 1965.







Designed for you.
Built for you. Since 1965.



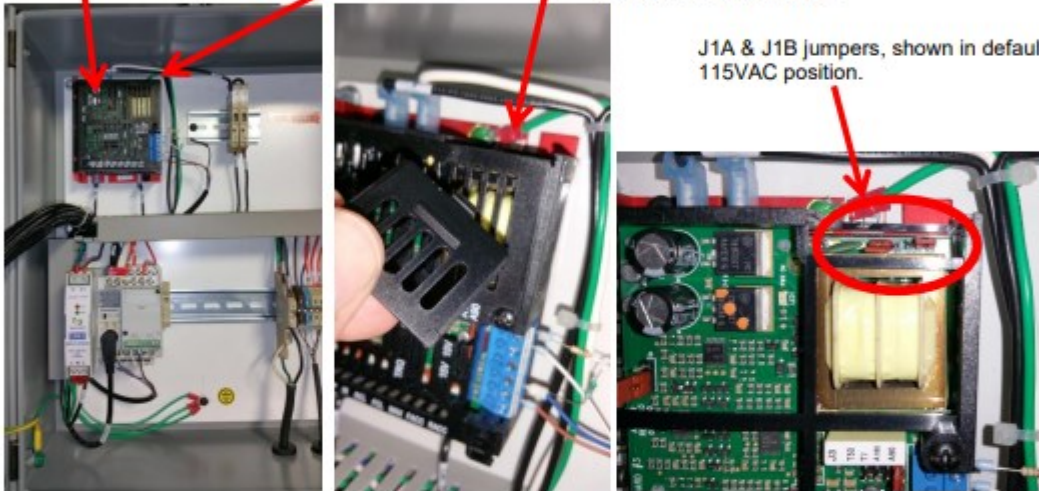
INSTRUCTION TO CHANGE AC LINE INPUT VOLTAGE TO 230VAC

115 VAC is the default setting from the factory. To change to 230VAC input voltage, follow the steps outlined below. (Note that Dual Inlet Pendulum Distributors have two DC Drives)

1. Locate J1A & J1B jumpers on the DC Drive

Open the small door on top of the drive (typical drive placement) to reveal the J1A & J1B jumpers. The door has a tab near the base of the drive that needs to be released in order to remove the door. If greater access is needed the face plate can also be removed.

DC Drive



2. To change input voltage to 230VAC move both jumpers to the inside position, as shown below. No other changes are required.

115VAC JUMPER CONFIGURATION
(TYPICAL FACTORY DEFAULT SETTING)

230VAC JUMPER CONFIGURATION

