

Designed for you.
Built for you. Since 1965.



Assembly Manual

FSA-DST-XX-XX
Turn Head Distributor w/ Manual Controls

www.lambtonconveyor.com
Email: sales@lambtonconveyor.com
102 Arnold St, Wallaceburg, Ontario, Canada N8A 3P4

Phone: (519) 627-8228
Fax: (519) 627-0250

LAMBTON CONVEYOR LIMITED WARRANTS ALL PRODUCTS MANUFACTURED BY LAMBTON CONVEYOR TO BE FREE OF DEFECTS IN MATERIAL AND WORKMANSHIP UNDER NORMAL USAGE AND CONDITIONS FOR A PERIOD OF 2 YEARS AFTER RETAIL SALE TO THE ORIGINAL END USER OF SUCH PRODUCTS. LAMBTON CONVEYOR'S ONLY OBLIGATION IS, AND PURCHASER'S SOLE REMEDY SHALL BE FOR LAMBTON CONVEYOR, TO REPAIR OR REPLACE, AT LAMBTON CONVEYOR'S OPTION AND EXPENSE, PRODUCTS THAT, IN LAMBTON CONVEYOR'S SOLE JUDGMENT, CONTAIN A MATERIAL DEFECT DUE TO MATERIALS OR WORKMANSHIP. ALL DELIVERY AND SHIPMENT CHARGES TO AND FROM LAMBTON CONVEYOR FACTORY WILL BE PURCHASER'S RESPONSIBILITY. EXPENSES INCURRED BY OR ON BEHALF OF THE PURCHASER WITHOUT PRIOR WRITTEN AUTHORIZATION FROM AN EMPLOYEE OF LAMBTON CONVEYOR LIMITED SHALL BE THE SOLE RESPONSIBILITY OF THE PURCHASER.

EXCEPT FOR THE ABOVE STATED EXPRESS LIMITED WARRANTIES, LAMBTON CONVEYOR LIMITED MAKES NO WARRANTY OF ANY KIND, EXPRESSED OR IMPLIED, INCLUDING, WITHOUT LIMITATION, WARRANTIES OF MERCHANTABILITY OF FITNESS FOR A PARTICULAR PURPOSE OR USE IN CONNECTION WITH (i) PRODUCT MANUFACTURED OR SOLD BY LAMBTON CONVEYOR LIMITED OR (ii) ANY ADVICE, INSTRUCTION, RECOMMENDATION OR SUGGESTION PROVIDED BY AN AGENT, REPRESENTATIVE OR EMPLOYEE OF LAMBTON CONVEYOR LIMITED REGARDING OR RELATED TO THE CONFIGURATION, INSTALLATION, LAYOUT, SUITABILITY FOR A PARTICULAR PURPOSE, OR DESIGN OF SUCH PRODUCT OR PRODUCTS.

IN NO EVENT SHALL LAMBTON CONVEYOR LIMITED BE LIABLE FOR ANY DIRECT, INDIRECT, INCIDENTAL OR CONSEQUENTIAL DAMAGES, INCLUDING, WITHOUT LIMITATION, LOSS OF ANTICIPATED PROFITS OR BENEFITS. PURCHASER'S SOLE AND EXCLUSIVE REMEDY SHALL BE LIMITED TO THAT STATED ABOVE, WHICH SHALL NOT EXCEED THE AMOUNT PAID FOR THE PRODUCT PURCHASED. THIS WARRANTY IS NOT TRANSFERABLE AND APPLIES ONLY TO THE ORIGINAL PURCHASER. LAMBTON CONVEYOR LIMITED SHALL HAVE NO OBLIGATION OR RESPONSIBILITY FOR ANY REPRESENTATIVE OR WARRANTIES MADE BY OR ON BEHALF OF ANY DEALER, AGENT OR DISTRIBUTION OF LAMBTON CONVEYOR LIMITED.

LAMBTON CONVEYOR ASSUMES NO RESPONSIBILITY FOR FIELD MODIFICATIONS OR ERECTION DEFECTS, WHICH CREATE STRUCTURAL OR STORAGE QUALITY PROBLEMS. MODIFICATIONS TO THE PRODUCT NOT SPECIFICALLY COVERED BY THE CONTENTS OF THIS MANUAL WILL NULLIFY ANY PRODUCT WARRANTY THAT MIGHT HAVE BEEN OTHERWISE AVAILABLE.

THE FOREGOING WARRANTY SHALL NOT COVER PRODUCTS OR PARTS, WHICH HAVE BEEN DAMAGED BY NEGLIGENT USE, MISUSE, ALTERNATION OR ACCIDENT. THIS WARRANTY COVERS PRODUCTS MANUFACTURED BY LAMBTON CONVEYOR LIMITED ONLY. THIS WARRANTY IS EXCLUSIVE AND IN LIEU OF ALL OTHER WARRANTIES EXPRESS OR IMPLIED. LAMBTON CONVEYOR LIMITED RESERVES THE RIGHT TO MAKE DESIGN OR SPECIFICATION CHANGES AT ANY TIME.

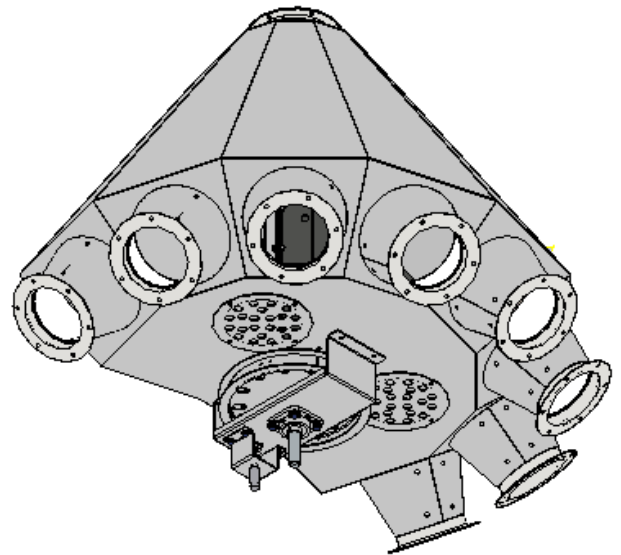
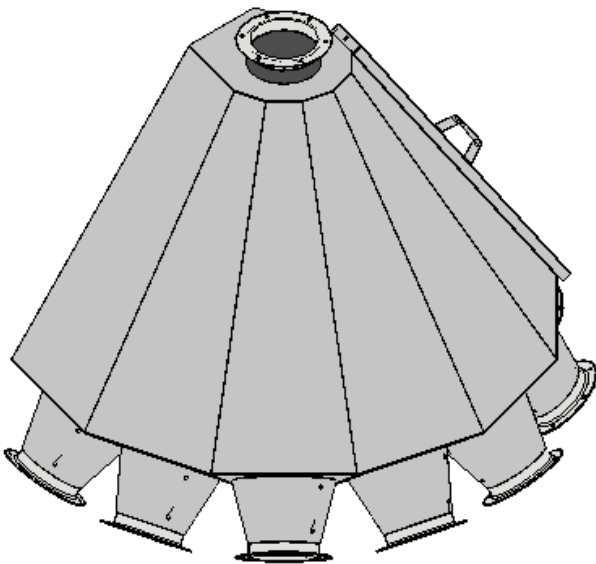
PRIOR TO INSTALLATION, PURCHASER HAS THE RESPONSIBILITY TO RESEARCH AND COMPLY WITH ALL FEDERAL, PROVINCIAL AND LOCAL CODES WHICH MAY APPLY TO THE LOCATION AND INSTALLATION.

Lambton turn-head distributor comes in various configurations and models. These all utilize the same type of control system which is illustrated on the following pages.

The spout is rotated by first depressing the foot pedal which is attached to the retractable control wheel locking pin. Once the locking pin is retracted the spout can be rotated freely using the hand cable wheel located on the ground by the foot pedal.

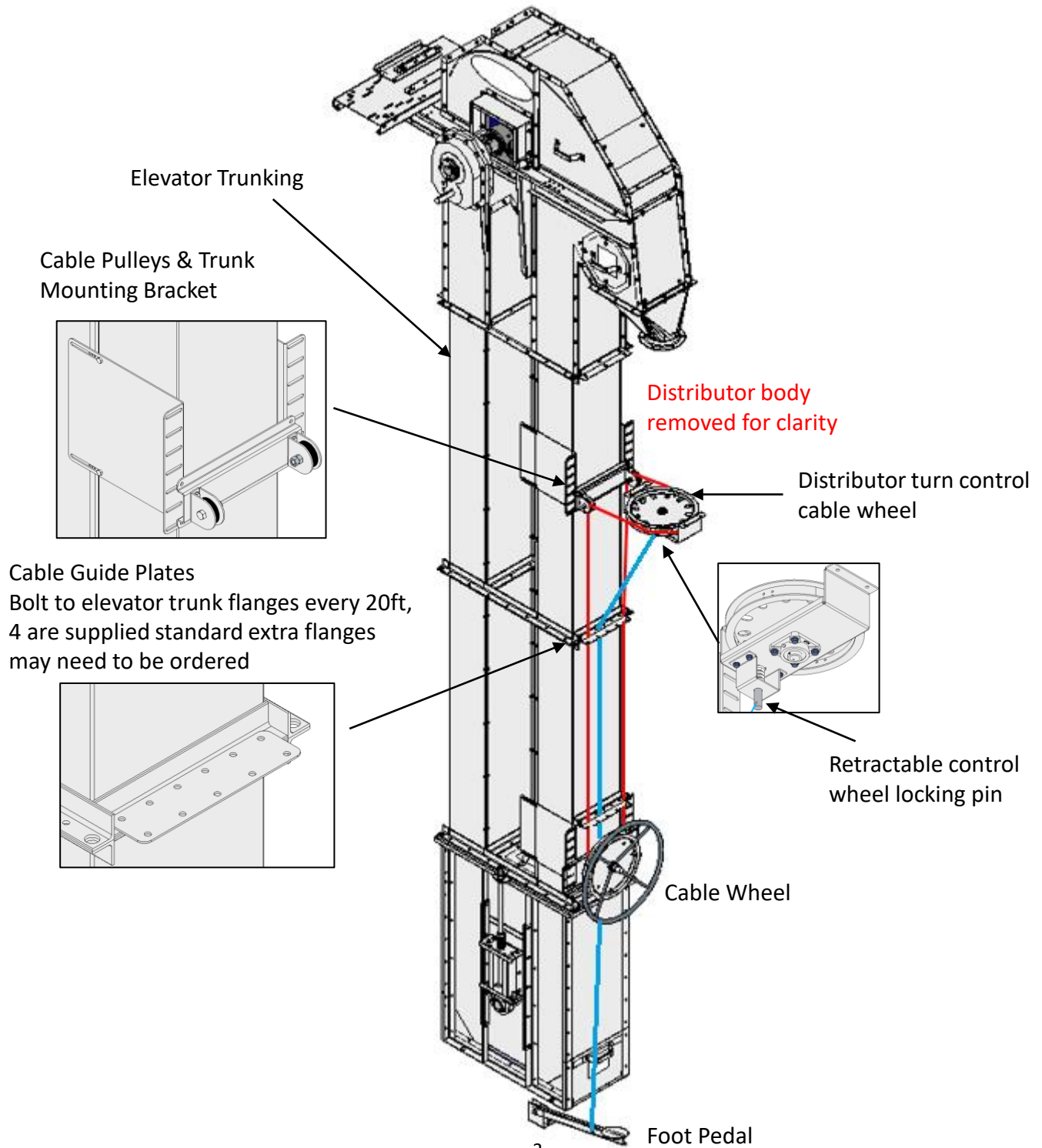
Numbered stickers are included with your purchase – use these to easily specify the various discharge spouts of the distributor. Large distributors (above 10”) come with a reduction control box in place of the standard hand cable wheel to ensure you can operate your distributor with ease

After use always rotate the spout from side to side to sweep away dust and fines. This will keep your Distributor clean and prevent freezing



The distributor is not designed to support the weight from any accessories, Spouting, Valves, Cleaners, Etc. must have their own supporting structures

Always ensure your distributor is adequately supported

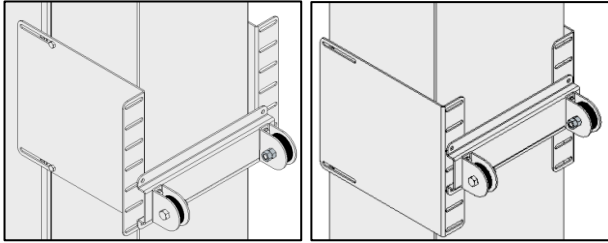


Below are visuals showing the bracket orientation for each trunk type

Cable Pulleys & Trunk Mounting Bracket

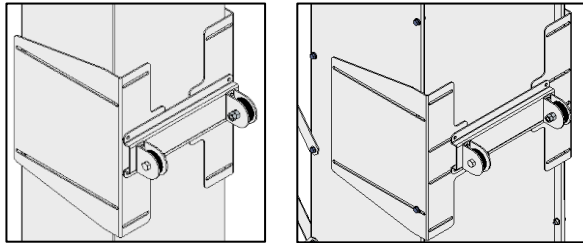
9x5

11x7 & 12x7



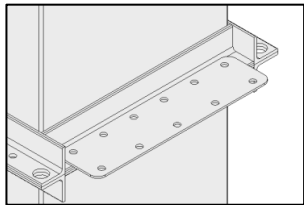
11x7 & 12x7

16x8 & 18x8



Cable Guide Plates

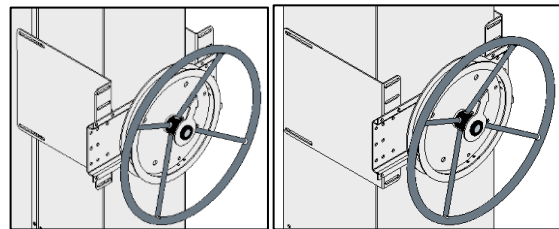
Bolt to elevator trunk flanges every 20ft,
4 are supplied standard extra flanges may need to be ordered



Cable Wheel

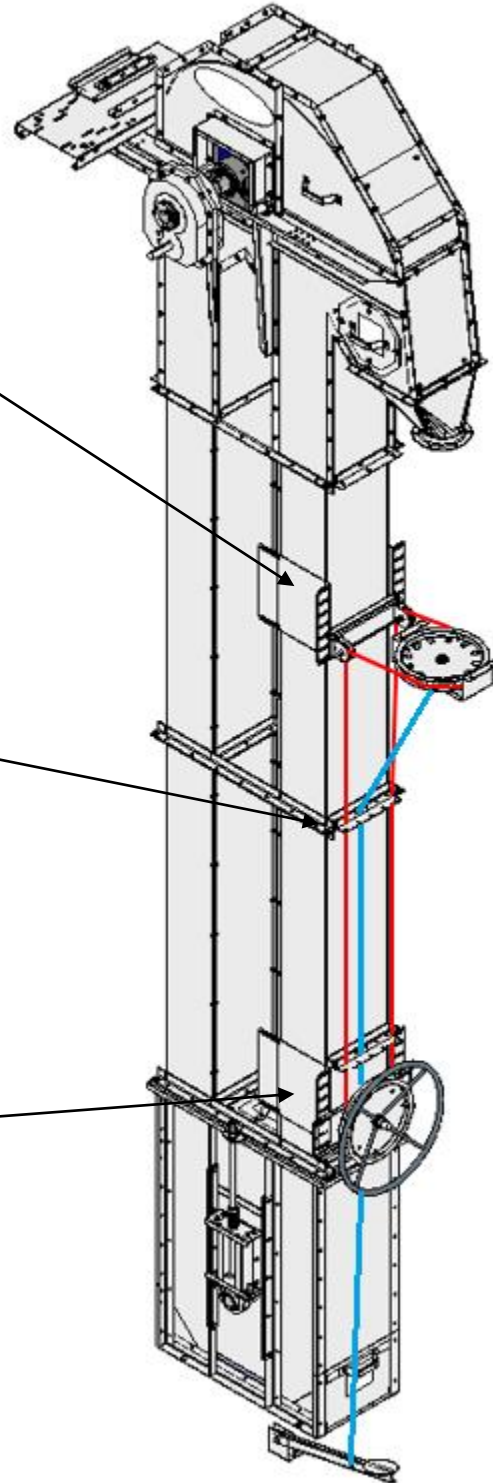
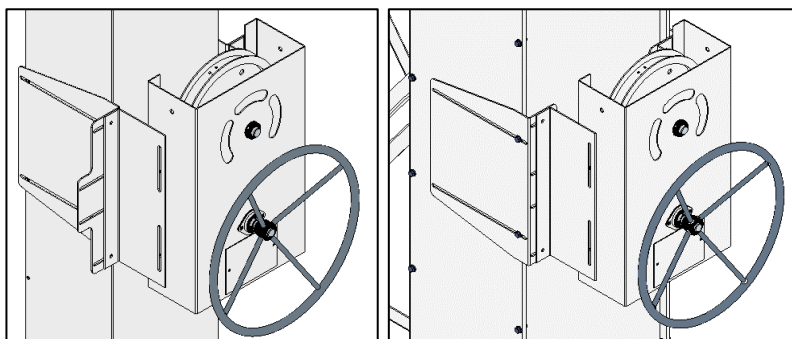
9x5 & 11x7

12x7



11x7 & 12x7

16x8 & 18x8



Foot Pedal

