

ONE SOURCE. ONE SOLUTION.



**Lambton**

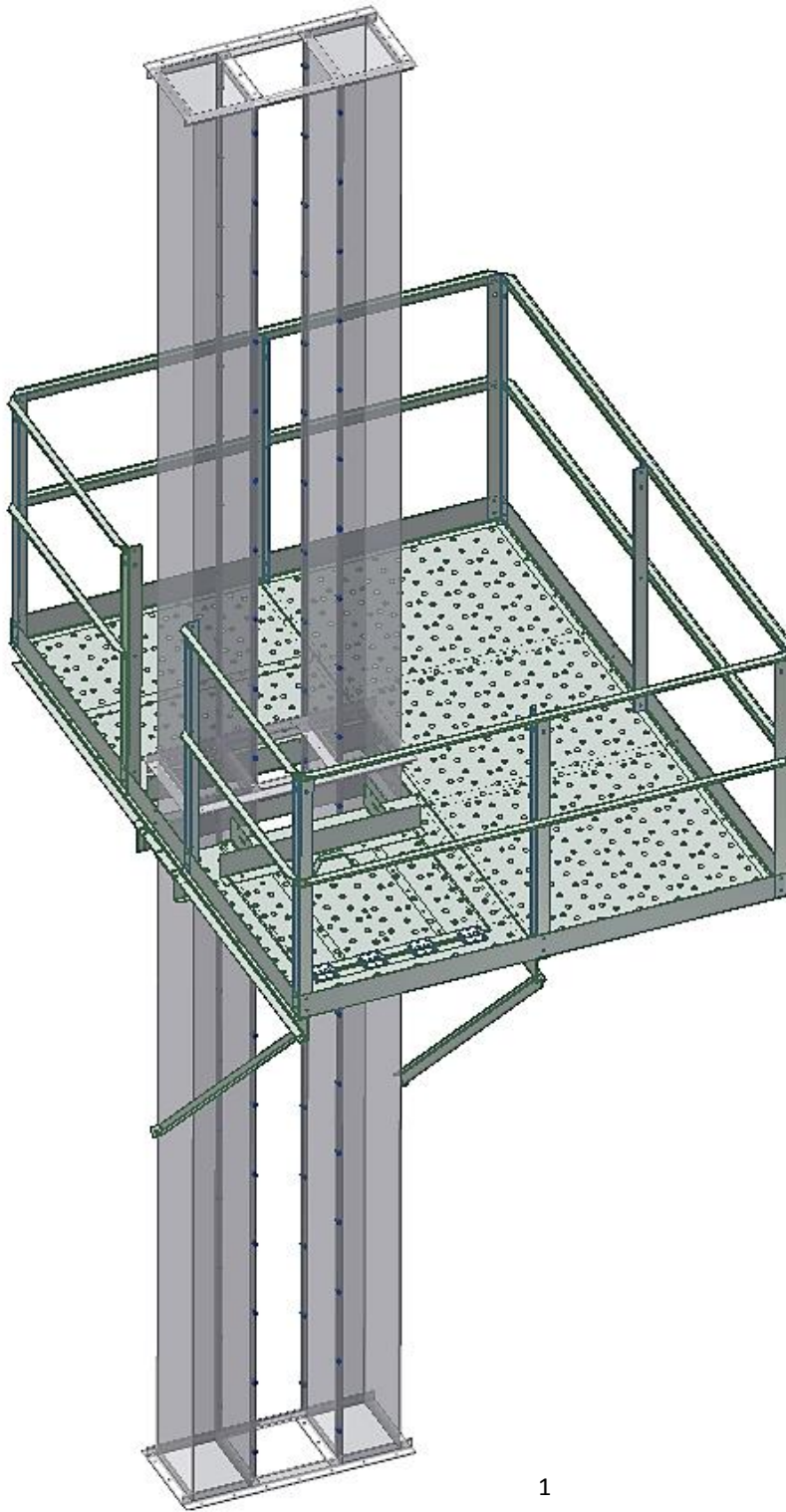
## ASSEMBLY MANUAL

GLA-RWPLAT-09X5  
REST WALK AROUND PLATFORM 9X5



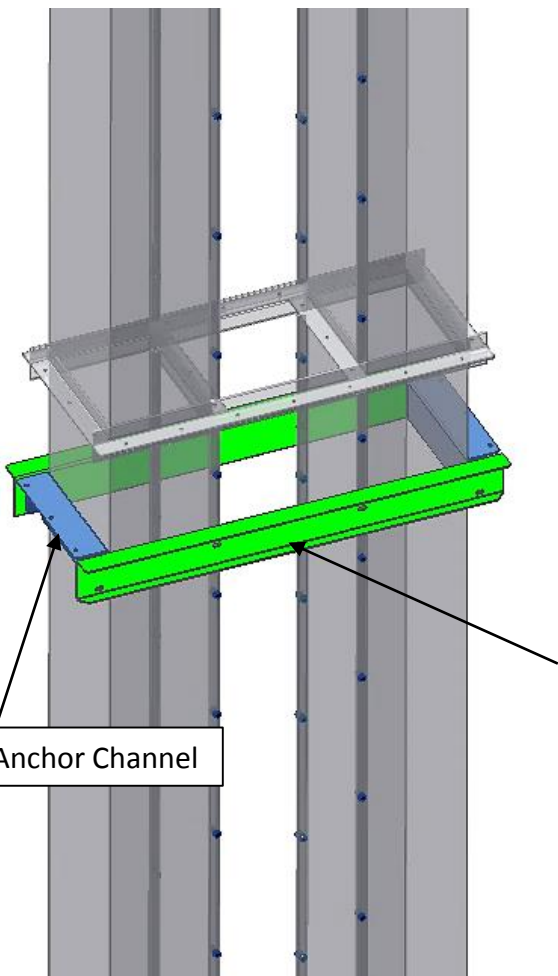
Below is the general layout of the 9x5 rest walk around platform. The door section on the floor can be used on either side of the platform to suit your needs.

This platform can be positioned anywhere along the vertical length of the trunks using the C Channel anchor mounts.

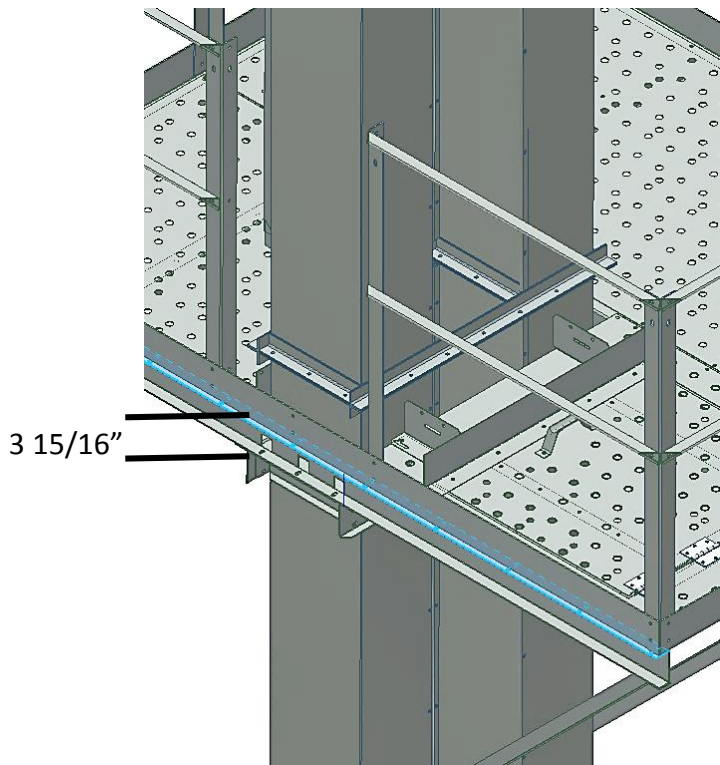


First assemble the Anchor channels to the trunking, they will bolt to each other and to the flange of the trunks as shown below.

Use 5/16" x 3/4" bolt and nuts

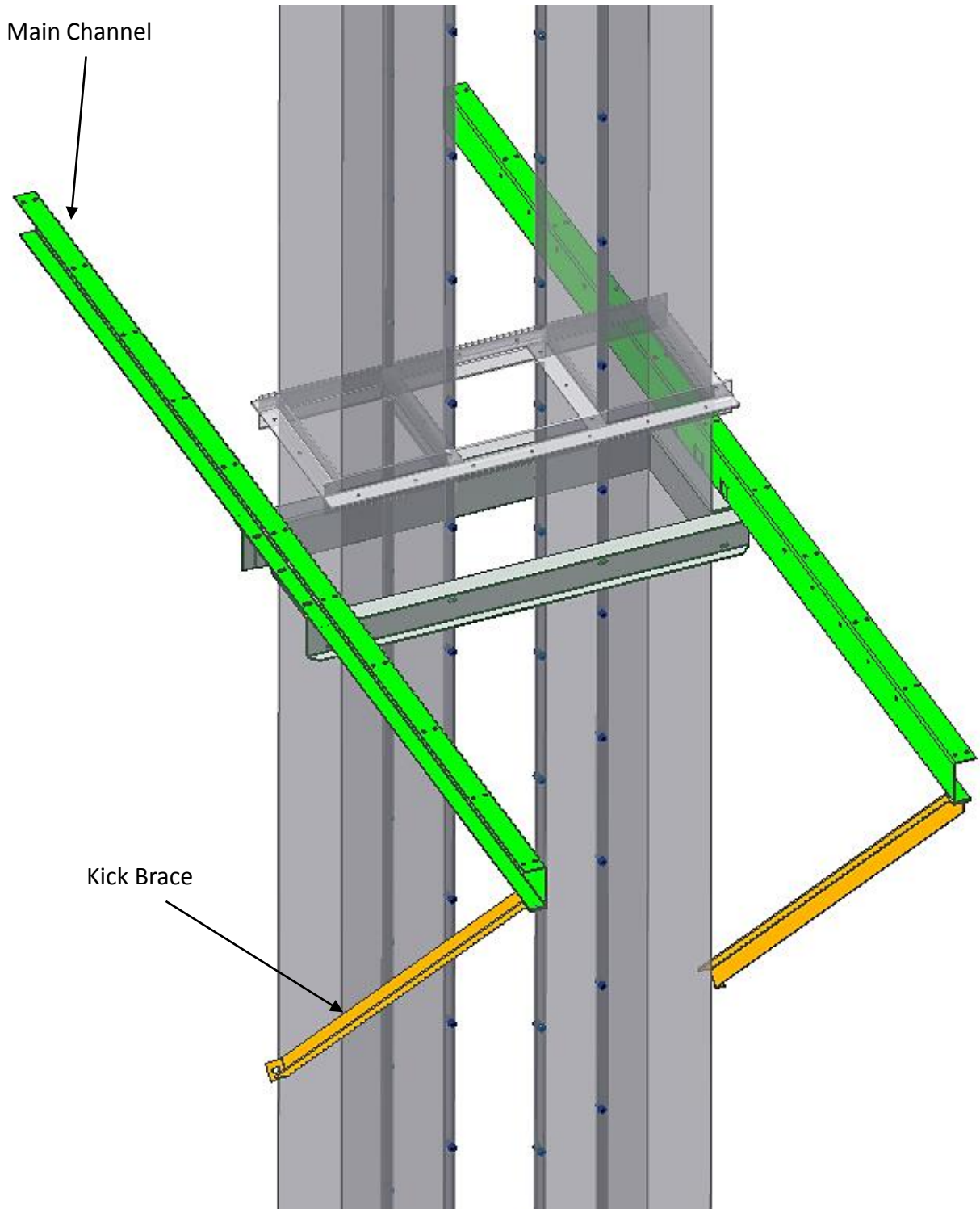


Long Anchor Channel



From the top of the anchor channels to the platform decking is 3 15/16"

Next install the main channels to the anchor channels. Also install the kick braces from the end of the main channels back to the trunk flange to secure them, depending on your positioning the flange may need to be drilled to fasten the kick braces.

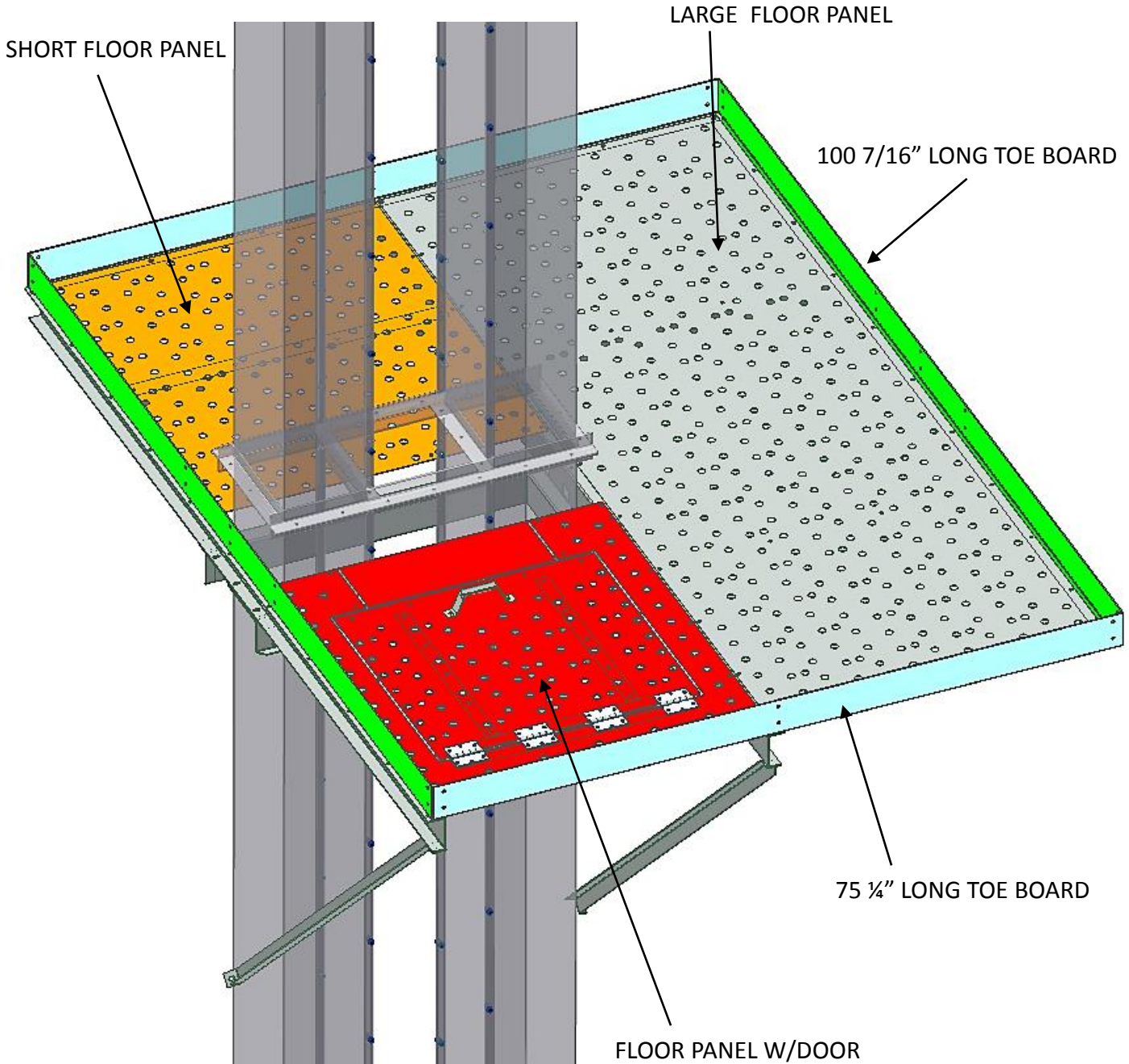




Next step is to install the toe boards and flooring to the main channels, starting with the 75 1/4" long toe boards.

Use 5/16" x 3/4" bolt and nuts

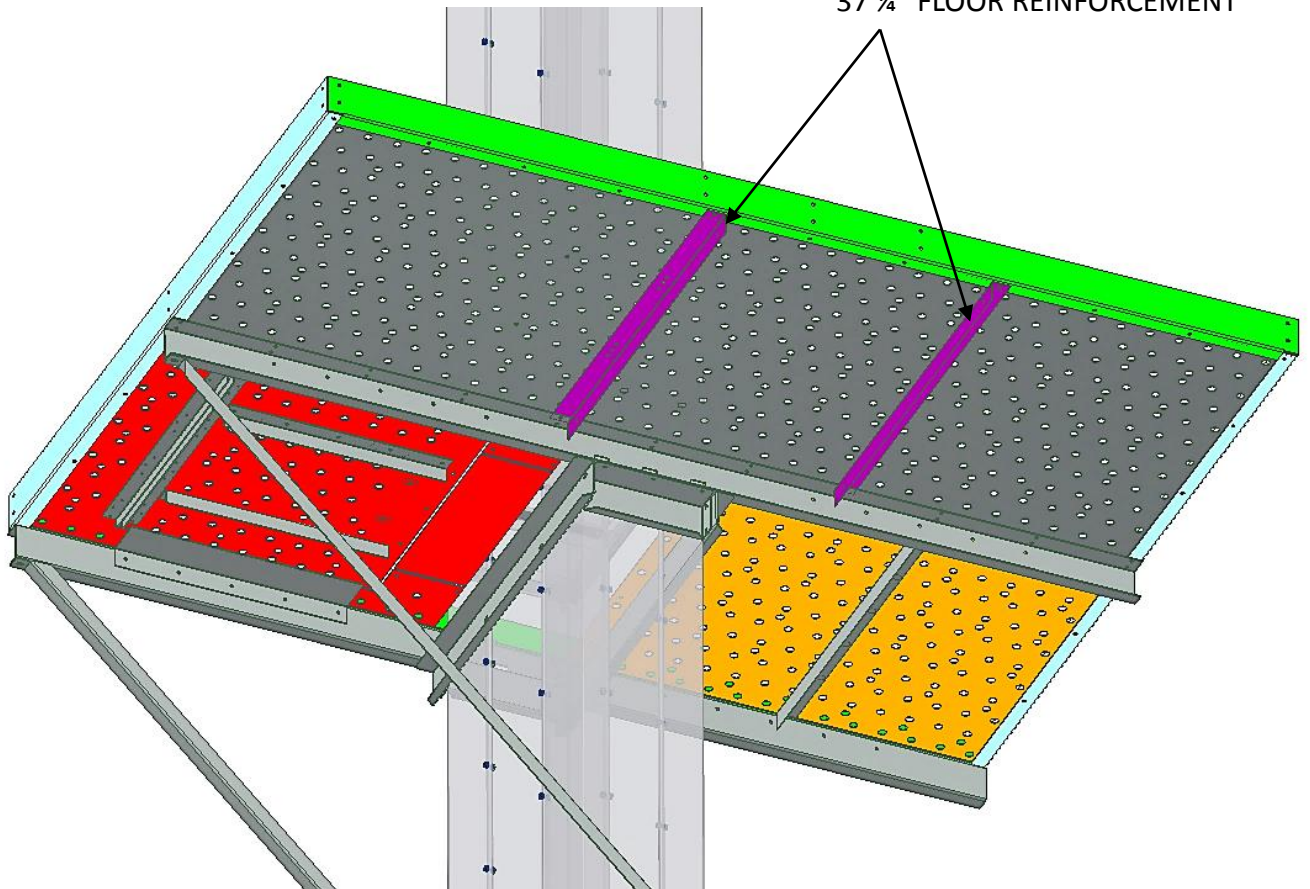
Use 5/16" x 3/4" truss bolts for flooring



Install the floor reinforcements to the bottom of the large floor panel

Use 5/16" x 3/4" truss bolt and nuts

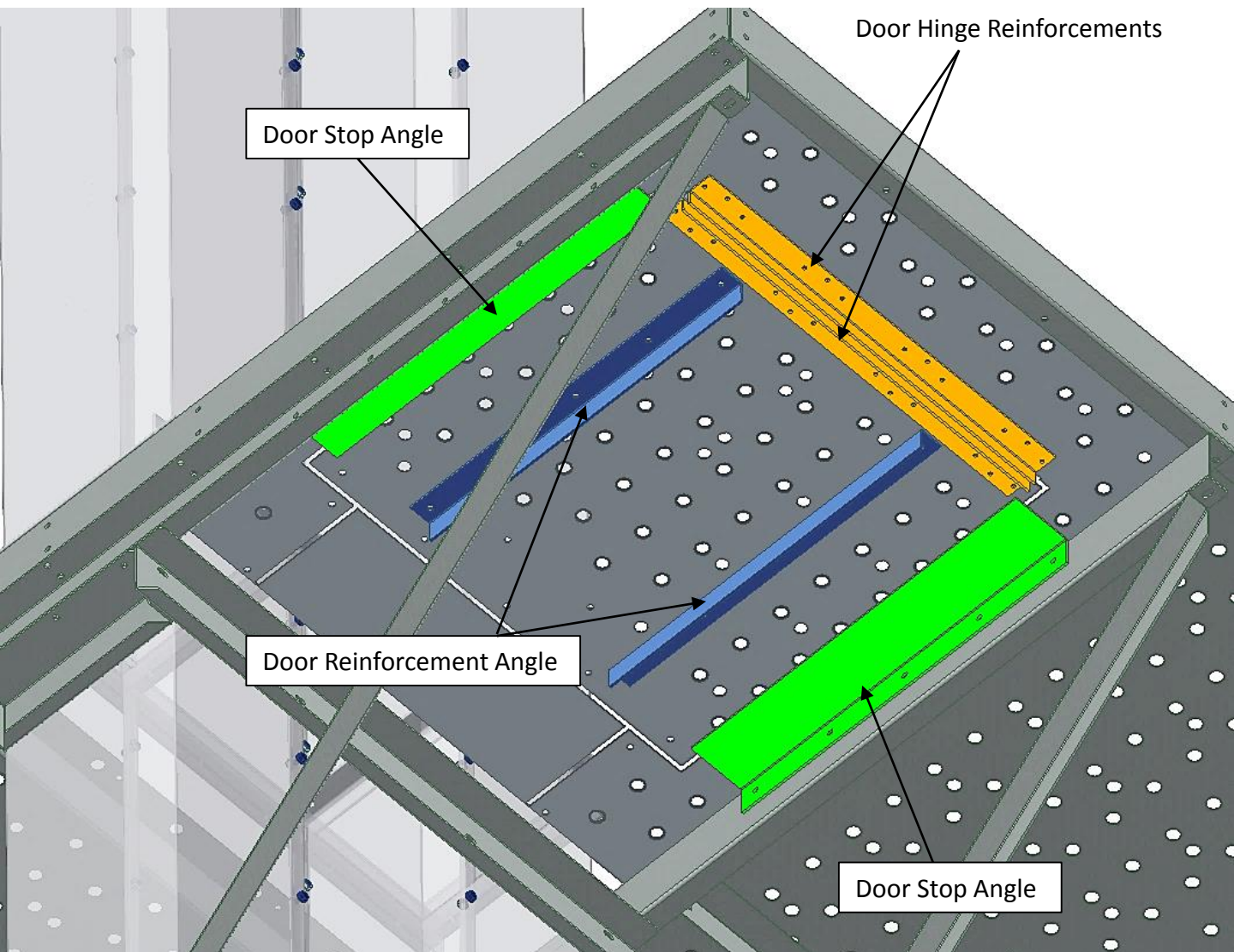
37 1/4" FLOOR REINFORCEMENT



Now install the door reinforcements and stops.

Use 5/16" x 3/4" truss bolt and nuts

Use 5/16" x 3/4" bolt and nuts for door stop

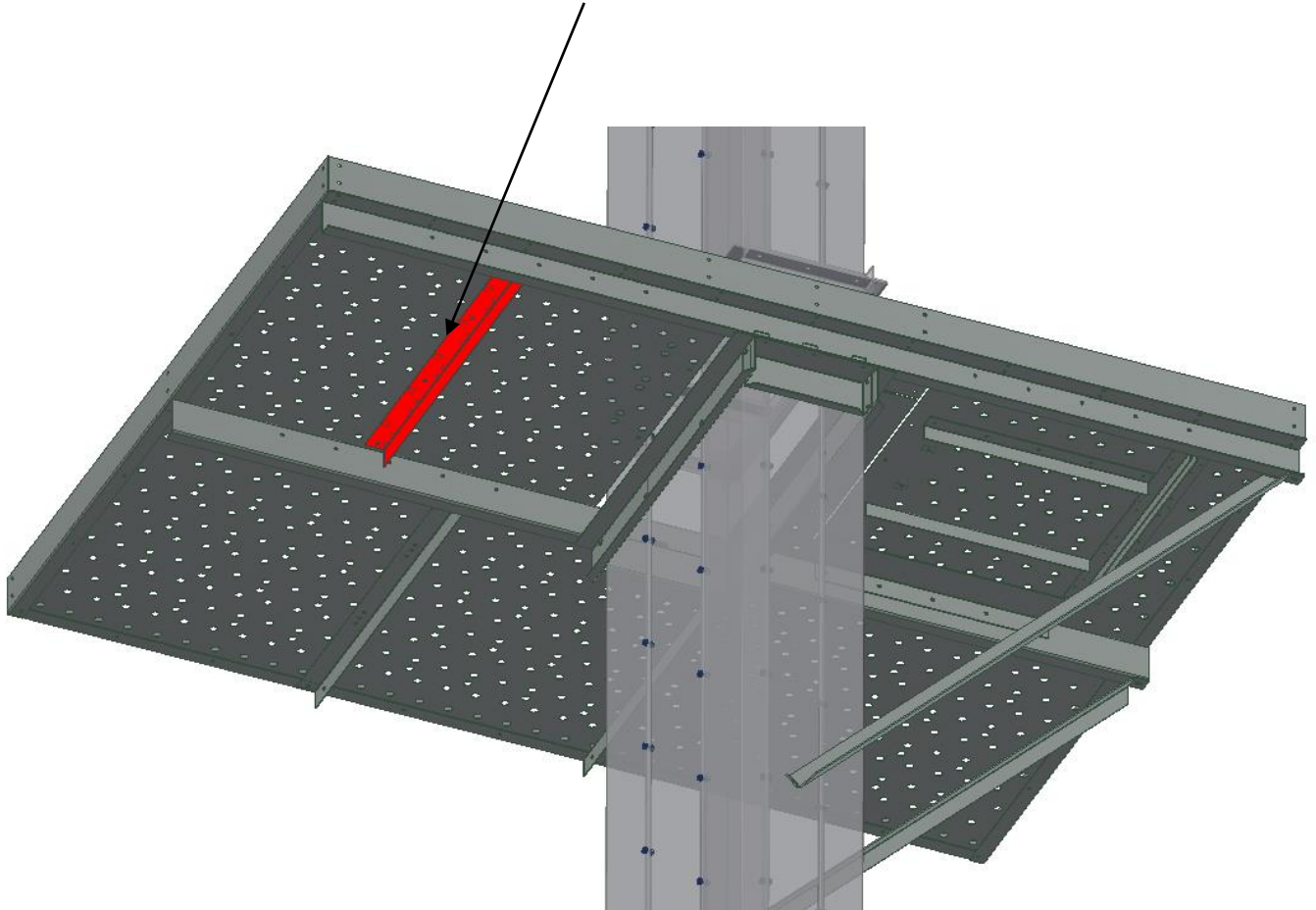




Install the floor reinforcement on the floor section opposite the door section.

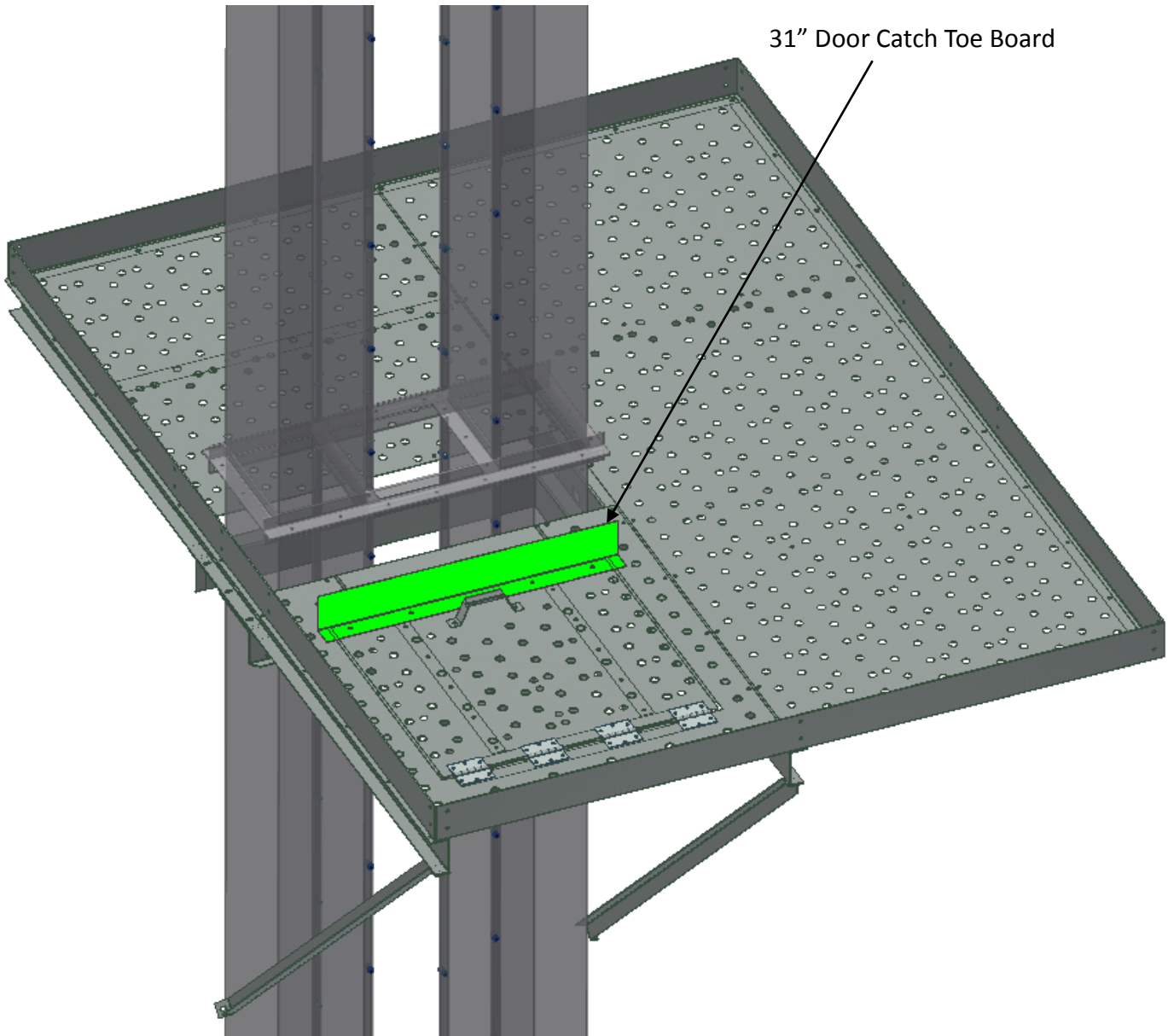
Use 5/16" x 3/4" truss bolt and nuts

34 7/8" Long Floor Reinforcement



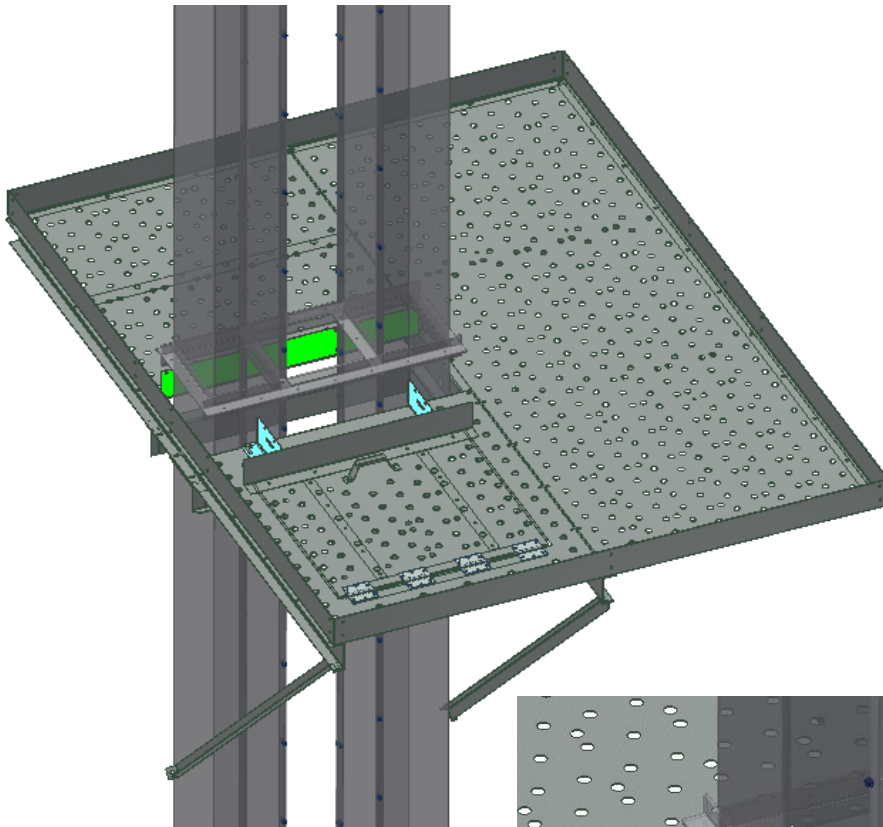
Install the door catch toe board to the top of the door as shown below.

Use 5/16" x 3/4" truss bolt and nuts



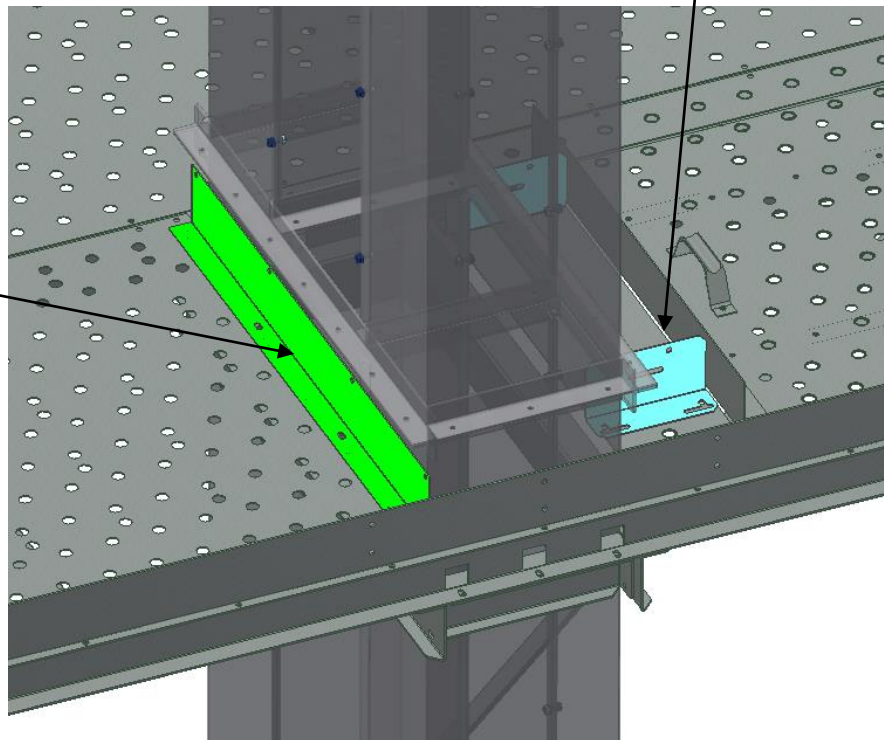
Install toe boards around the trunk, 1 long and 2 short as shown

Use 5/16" x 3/4" Truss Bolt and nuts



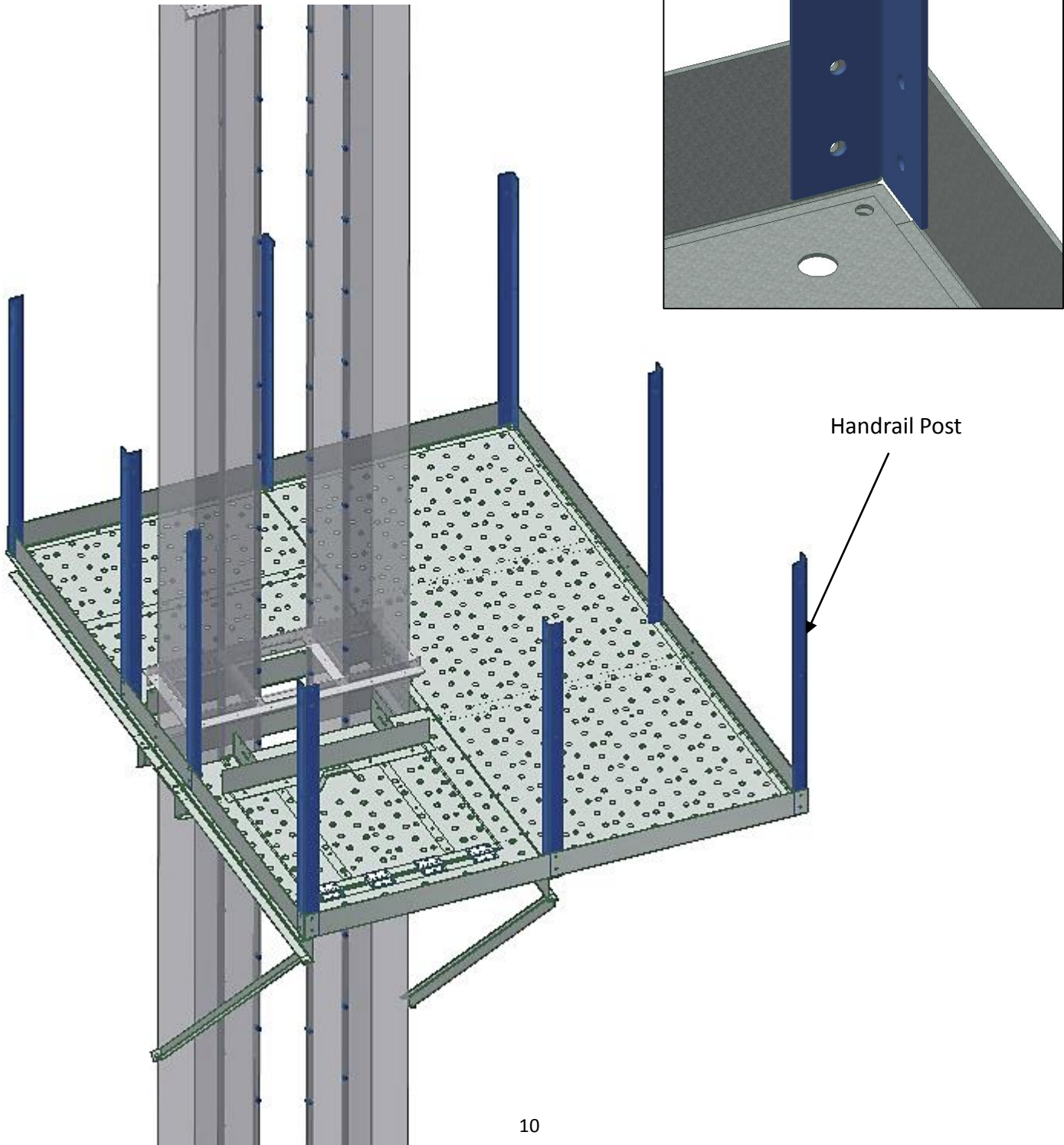
Short Toe Board

34 15/16" Toe Board



Install the handrail posts around the toe boards as shown

Use 5/16" x 3/4" Bolt and Nuts





Now install the handrails

Use 5/16" x 3/4" Truss Bolt and Nuts

