

18 x 8 DOUBLE BUCKET 20 x 8 SINGLE BUCKET 12 x 8 DOUBLE BUCKET
18 x 8 SINGLE BUCKET 12 x 8 SINGLE BUCKET

30" LARGE WORK PLATFORM ASSEMBLY

PARTS LIST FOR 18X8 SINGLE

- Note: Quantity of # 3 • 3 with distributor • 1 without distributor
 Quantity of # 1A • 2 with distributor • Not necessary without distributor

Part	Description	Length	Quantity	Part #	
1	Main Support Channel	C-Channel	100 7/8"	2	Uwo30188.00
1 A	Main Support Channel - B	C-Channel	108"	2 or 0	Uwo30188.B0
2	Back Secondary Support Channel	C-Channel	70 7/8"	1	Uwo30188.05
2A	Door Support Channels	C-Channel	43 3/4"	2	Uwo30188.A5
3	Rear Secondary Support Channel	C-Channel	113 1/8"	3 or 1	Uwo30188.02
4	Middle Secondary Support Channel	C-Channel	92 15/16"	1	Uwo30188.04
5	Front Secondary Support Channel	C-Channel	52 1/2"	1	Uwo30188.03
6	Floor / Door Support Angle	Angle	24"	2	Uwo30188.11
7	Rear Ladder Toe Board	Angle	59"	1	Uwo30188.18
8	Door Floor Panel	Flat Sheet	56 9/16"x41 7/8"	1	Uwo30188.01
9	Door-side Toe Board	Angle	42 1/2"	1	uworkp30.016
10	Door-front Toe Board	Angle	67 1/2"	1	Uwo30188.07
11	Ladder Toe Board	Angle	7 3/4"	2	uservp16.008
13	Door Toe Board	Angle	31"	1	uservp16.008
14	Floor / Door Support	Angle	23"	2	uservp16.004
15	Hinge Stiffeners	Angle	26 3/8"	2	uservp16.005
16	Work Area Floor Panel	Flat Sheet	103" x 40 3/8"	1	Uwo30188.21
17	Rear Work Area Toe Board	Angle	70 1/4"	1	Uwo30188.06
18	Front Angle Toe Board	Angle	45 3/16"	2	uworkp30.005
19	Front Work Area Toe Board	Angle	49 1/4"	1	Uwo30188.08
19a	Short Work Area Toe Board	Angle	9 1/4"	1	uworkp30.004
20	Railing Uprights	Angle	42"	8	USE30188.10
21	Door-side Handrail	Angle	41 7/8"	2	Uwo30188.20
22	Rear Work Area Handrail	Angle	69 5/8"	2	Uwo30188.09
23	Short Work Area Handrail	Angle	8 13/16"	2	uworkp30.012
24	Front Angle Handrail	Angle	44 5/8"	4	uworkp30.010
25	Front Work Area Handrail	Angle	48 5/8"	2	Uwo30188.10
26	Door-front Handrail	Angle	67"	2	Uwo30188.19
27	Rear Ladder Handrail	Angle	55 13/16"	2	uworkp30.008
28	Kick Brace (work side)	Angle	80 13/16"	2	uworkp30.014
29	Kick Brace (door side)	Angle	57 1/16"	2	URESTP30.006
30	Kick Brace Support Channel	C-Channel	60 7/8"	1	Uwo30188.12
	5/16" x 3/4" bolts	Use Grade 8 strength bolts only. Torqued to 120 ft. lbs <u>minimum</u> .			
	5/16" nuts				
	1/4" x 1" bolts				
	1/4" nuts				

Note: Unless otherwise noted all bolts to be used are 5/16" x 3/4".

PARTS LIST FOR 18X8 DOUBLE

- Note: Quantity of # 3 • 6 with distributor • 2 without distributor
 Quantity of # 1A • 2 with distributor • Not necessary without distributor

#	Part	Description	Length	Quantity	Part #
1	Main Support Channel	C-Channel	100 7/8"	2	UWO30188.00
1 A	Main Support Channel - B	C-Channel	108"	2 or 0	Uwo30188.B0
2	Back Secondary Support Channel	C-Channel	88 7/8"	1	UWO30188.D05
2A	Door Support Channels	C-Channel	43 3/4"	2	Uwo30188.A5
3	Rear Secondary Support Channel	C-Channel	65 5/8"	6 or 2	Uwo30188.D02
4	Middle Secondary Support Channel	C-Channel	110 15/16"	1	Uwo30188.D04
5	Front Secondary Support Channel	C-Channel	70 1/2"	1	Uwo30188.D03
6	Floor / Door Support Angle	Angle	24"	2	Uwo30188.11
7	Rear Ladder Toe Board	Angle	59"	1	Uwo30188.18
8	Door Floor Panel	Flat Sheet	40 3/8" x 11 3/4"	1	Uwo30188.D22
9	Door-side Toe Board	Angle	42 1/2"	1	uworkp30.016
10	Door-front Toe Board	Angle	67 1/2"	1	Uwo30188.07
11	Ladder Toe Board	Angle	7 3/4"	2	uservp16.008
13	Door Toe Board	Angle	31"	1	uservp16.008
14	Floor / Door Support	Angle	23"	2	uservp16.004
15	Hinge Stiffeners	Angle	26 3/8"	2	uservp16.005
16	Work Area Floor Panel	Flat Sheet	120" x 48 "	1	Uwo30188.D21
17	Rear Work Area Toe Board	Angle	88 1/4"	1	Uwo30188.D06
18	Front Angle Toe Board	Angle	45 3/16"	2	uworkp30.005
19	Front Work Area Toe Board	Angle	67 1/4"	1	Uwo30188.D08
19a	Short Work Area Toe Board	Angle	9 1/4"	1	uworkp30.004
20	Railing Uprights	Angle	42"	8	USE30188.10
21	Door-side Handrail	Angle	41 7/8"	2	Uwo30188.20
22	Rear Work Area Handrail	Angle	87 5/8"	2	Uwo30188.D09
23	Short Work Area Handrail	Angle	8 13/16"	2	uworkp30.012
24	Front Angle Handrail	Angle	44 5/8"	2	uworkp30.010
25	Front Work Area Handrail	Angle	66 5/8"	2	Uwo30188.D10
26	Door-front Handrail	Angle	67"	2	Uwo30188.19
27	Rear Ladder Handrail	Angle	55 13/16"	2	uworkp30.008
28	Kick Brace (work side)	Angle	80 13/16"	2	uworkp30.014
29	Kick Brace (door side)	Angle	59 1/16"	2	URESTP30.006
30	Kick Brace Support Channel	C-Channel	60 7/8"	1	Uwo30188.12
31	Joiner Channel(joins # 3 in double)	C-Channel	20"	3 or 1	Uwo30188.D02J
	5/16" x 3/4" bolts	Use Grade 8 strength bolts only. Torqued to 120 ft. lbs <u>minimum</u> .			
	5/16" nuts				
	1/4" x 1" bolts				
	1/4" nuts				

Note: Unless otherwise noted all bolts to be used are 5/16" x 3/4".

PARTS LIST FOR 20X8 SINGLE

Note: Quantity of # 3 • 3 with distributor • 1 without distributor
 Quantity of # 1A • 2 with distributor • Not necessary without distributor

	Part	Description	Length	Quantity	Part #
1	Main Support Channel	C-Channel	100 7/8"	2	Uwo30188.00
1 A	Main Support Channel - B	C-Channel	108"	2 or 0	Uwo30188.B0
2	Back Secondary Support Channel	C-Channel	73 7/8"	1	Uwo30208.05
2A	Door Support Channels	C-Channel	43 3/4"	2	Uwo30188.A5
3	Rear Secondary Support Channel	C-Channel	116 1/8"	3 or 1	Uwo30208.02
4	Middle Secondary Support Channel	C-Channel	95 15/16"	1	Uwo30208.04
5	Front Secondary Support Channel	C-Channel	55 1/2"	1	Uwo30208.03
6	Floor / Door Support Angle	Angle	24"	2	Uwo30188.11
7	Rear Ladder Toe Board	Angle	59"	1	Uwo30188.18
8	Door Floor Panel	Flat Sheet	56 9/16"x41 7/8"	1	Uwo30188.01
9	Door-side Toe Board	Angle	42 1/2"	1	uworkp30.016
10	Door-front Toe Board	Angle	67 1/2"	1	Uwo30188.07
11	Ladder Toe Board	Angle	7 3/4"	2	uservp16.008
13	Door Toe Board	Angle	31"	1	uservp16.008
14	Floor / Door Support	Angle	23"	2	uservp16.004
15	Hinge Stiffeners	Angle	26 3/8"	2	uservp16.005
16	Work Area Floor Panel	Flat Sheet	106" x 40 3/8"	1	Uwo30208.21
17	Rear Work Area Toe Board	Angle	73 1/4"	1	Uwo30208.06
18	Front Angle Toe Board	Angle	45 3/16"	2	uworkp30.005
19	Front Work Area Toe Board	Angle	52 1/4"	1	Uwo30208.08
19a	Short Work Area Toe Board	Angle	9 1/4"	1	uworkp30.004
20	Railing Uprights	Angle	42"	8	USE30188.10
21	Door-side Handrail	Angle	41 7/8"	2	Uwo30188.20
22	Rear Work Area Handrail	Angle	72 5/8"	2	Uwo30208.09
23	Short Work Area Handrail	Angle	8 13/16"	2	uworkp30.012
24	Front Angle Handrail	Angle	44 5/8"	4	uworkp30.010
25	Front Work Area Handrail	Angle	51 5/8"	2	Uwo30208.10
26	Door-front Handrail	Angle	67"	2	Uwo30188.19
27	Rear Ladder Handrail	Angle	55 13/16"	2	uworkp30.008
28	Kick Brace (work side)	Angle	80 13/16"	2	uworkp30.014
29	Kick Brace (door side)	Angle	57 1/16"	2	URESTP30.006
30	Kick Brace Support Channel	C-Channel	60 7/8"	1	Uwo30188.12
	5/16" x 3/4" bolts	Use Grade 8 strength bolts only. Torqued to 120 ft. lbs <u>minimum</u> .			
	5/16" nuts				
	1/4" x 1" bolts				
	1/4" nuts				

Note: Unless otherwise noted all bolts to be used are 5/16" x 3/4".

PARTS LIST FOR 12X8 SINGLE

- Note: Quantity of # 3 • 3 with distributor • 1 without distributor
 Quantity of # 1A • 2 with distributor • Not necessary without distributor

#	Part	Description	Length	Quantity	Part #
1	Main Support Channel - A	C-Channel	100 7/8"	2	Uwo30188.A0
1 A	Main Support Channel - B	C-Channel	108"	2 or 0	Uwo30188.B0
2	Back Secondary Support Channel	C-Channel	76 7/8"	1	Uwo30128.D05
2A	Door Support Channels	C-Channel	43 3/4"	2	Uwo30188.A5
3	Rear Secondary Support Channel	C-Channel	119 1/8"	3 or 1	Uwo30128.D02
4	Middle Secondary Support Channel	C-Channel	98 15/16"	1	Uwo30128.D04
5	Front Secondary Support Channel	C-Channel	58 1/2"	1	Uwo30128.D03
6	Floor / Door Support Angle	Angle	24"	2	Uwo30188.11
7	Rear Ladder Toe Board	Angle	59"	1	Uwo30188.18
8	Door Floor Panel	Flat Sheet	58 7/8" x 41 7/8"	1	Uwo30188.01
9	Door-side Toe Board	Angle	42 1/2"	1	uworkp30.016
10	Door-front Toe Board	Angle	67 1/2"	1	Uwo30188.07
11	Ladder Toe Board	Angle	7 3/4"	2	uservp16.008
13	Door Toe Board	Angle	31"	1	uservp16.008
14	Floor / Door Support	Angle	23"	2	uservp16.004
15	Hinge Stiffeners	Angle	26 3/8"	2	uservp16.005
16	Work Area Floor Panel	Flat Sheet	120x48"	2	Uwo30128.D21
17	Rear Work Area Toe Board	Angle	76.25	1	Uwo30128.D06
18	Front Angle Toe Board	Angle	45 3/16"	2	uworkp30.005
19	Front Work Area Toe Board	Angle	55 1/4"	1	Uwo30128.D08
19a	Short Work Area Toe Board	Angle	9 1/4"	1	uworkp30.004
20	Railing Uprights	Angle	42"	8	USE30188.10
21	Door-side Handrail	Angle	41 7/8"	2	Uwo30188.20
22	Rear Work Area Handrail	Angle	75 5/8"	2	Uwo30128.D09
23	Short Work Area Handrail	Angle	8 13/16"	2	uworkp30.012
24	Front Angle Handrail	Angle	44 5/8"	2	uworkp30.010
25	Front Work Area Handrail	Angle	54 5/8"	2	Uwo30128.D10
26	Door-front Handrail	Angle	67"	2	Uwo30188.19
27	Rear Ladder Handrail	Angle	55 13/16"	2	uworkp30.008
28	Kick Brace (work side)	Angle	78.5	2	uworkp30.014
29	Kick Brace (door side)	Angle	59 1/16"	2	URESTP30.006
30	Kick Brace Support Channel	C-Channel	60 7/8"	1	Uwo30188.12
	5/16" x 3/4" bolts	Use Grade 8 strength bolts only. Torqued to 120 ft. lbs <u>minimum</u> .			
	5/16" nuts				
	1/4" x 1" bolts				
	1/4" nuts				

PARTS LIST FOR 12X8 DOUBLE

Note: Quantity of # 3 • 3 with distributor • 1 without distributor
Quantity of # 1A • 2 with distributor • Not necessary without distributor

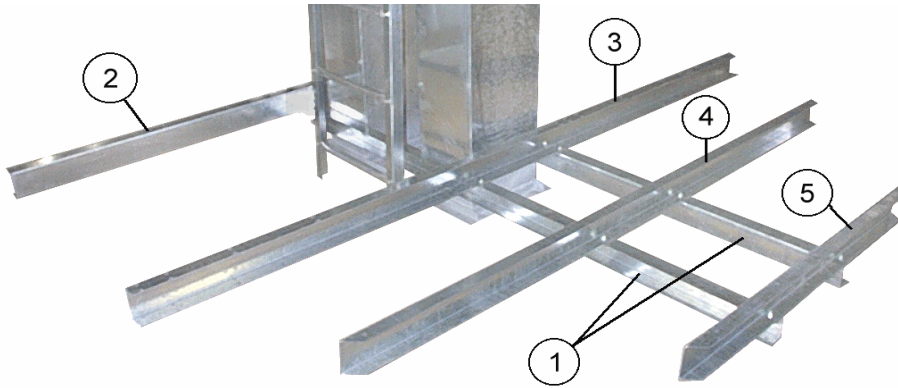
#	Part	Description	Length	Quantity	Part #
1	Main Support Channel - A	C-Channel	100 7/8"	2	Uwo30188.A0
1 A	Main Support Channel - B	C-Channel	108"	2 or 0	Uwo30188.B0
2	Back Secondary Support Channel	C-Channel	76 7/8"	1	Uwo30128.D05
2A	Door Support Channels	C-Channel	43 3/4"	2	Uwo30188.A5
3	Rear Secondary Support Channel	C-Channel	119 1/8"	3 or 1	Uwo30128.D02
4	Middle Secondary Support Channel	C-Channel	98 15/16"	1	Uwo30128.D04
5	Front Secondary Support Channel	C-Channel	58 1/2"	1	Uwo30128.D03
6	Floor / Door Support Angle	Angle	24"	2	Uwo30188.11
7	Rear Ladder Toe Board	Angle	59"	1	Uwo30188.18
8	Door Floor Panel	Flat Sheet	58 7/8" x 41 7/8"	1	Uwo30188.01
9	Door-side Toe Board	Angle	42 1/2"	1	uworkp30.016
10	Door-front Toe Board	Angle	115 1/2"	1	Uwo30188.A7
11	Ladder Toe Board	Angle	7 3/4"	2	uservp16.008
13	Door Toe Board	Angle	31"	1	uservp16.008
14	Floor / Door Support	Angle	23"	2	uservp16.004
15	Hinge Stiffeners	Angle	26 3/8"	2	uservp16.005
16	Work Area Floor Panel	Flat Sheet	120x48"	2	Uwo30128.D21
17	Rear Work Area Toe Board	Angle	76 1/4"	1	Uwo30128.D06
18	Front Angle Toe Board	Angle	45 3/16"	2	uworkp30.005
19	Front Work Area Toe Board	Angle	55 1/4"	1	Uwo30128.D08
19a	Short Work Area Toe Board	Angle	57 1/4"	1	Uwo30188.A4
20	Railing Uprights	Angle	42"	8	USE30188.10
21	Door-side Handrail	Angle	41 7/8"	2	Uwo30188.20
22	Rear Work Area Handrail	Angle	75 5/8"	2	Uwo30128.D09
23	Short Work Area Handrail	Angle	56 3/4"	2	Uwo30188.A27
24	Front Angle Handrail	Angle	44 5/8"	2	uworkp30.010
25	Front Work Area Handrail	Angle	54 5/8"	2	Uwo30128.D10
26	Door-front Handrail	Angle	115"	2	Uwo30188.A19
27	Rear Ladder Handrail	Angle	57 5/8"	2	UWO30188.17
28	Kick Brace (work side)	Angle	78.5	2	uworkp30.014
29	Kick Brace (door side)	Angle	59 1/16"	2	URESTP30.006
30	Kick Brace Support Channel	C-Channel	60 7/8"	1	Uwo30188.12
	5/16" x 3/4" bolts	Use Grade 8 strength bolts only. Torqued to 120 ft. lbs <u>minimum</u> .			
	5/16" nuts				
	1/4" x 1" bolts				
	1/4" nuts				

The Lambton Conveyor Work Platform is intended to be mounted approximately 6' below the elevator distributor to the trunking and should be used for servicing the distributor only. Due to various layouts it may be necessary to mount the platform lower in order to miss the distributor valves and spouting. It is the assemblers, and users responsibility to ensure safe working conditions in any situation. In order to maintain a safe working environment, ladders and cages may be

necessary additions to the platform. Due to the many applications a kit is not available. It is also the owner's responsibility to ensure all unauthorized personnel cannot access these assemblies.

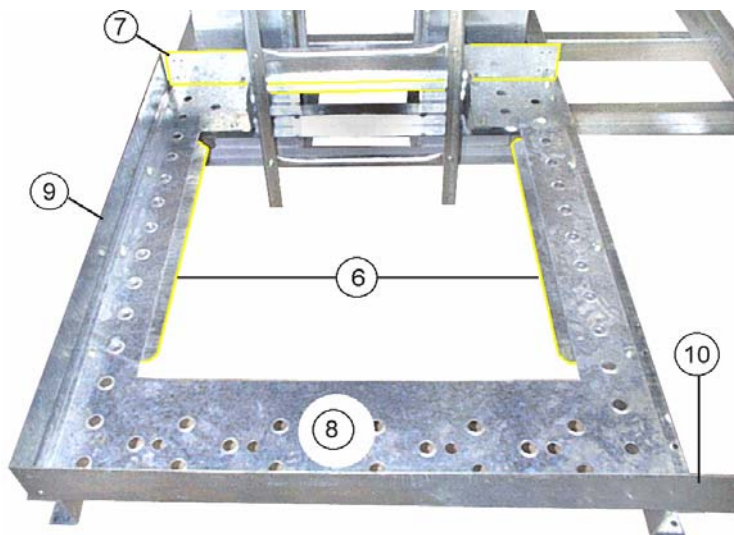
Step #1

Bolt the Main Support Channels (1) to the trunking at the desired height of the platform using the existing bolts. Now bolt the Back Secondary Support Channel (2), Rear Secondary Support Channel (3), Middle Secondary Support Channel (4), and Front Secondary Support Channel (5) into place as shown on the diagram.



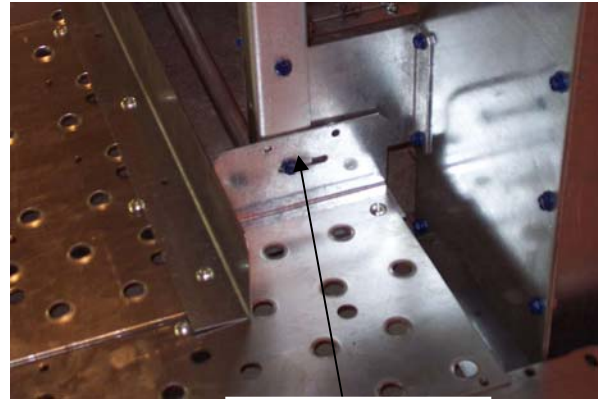
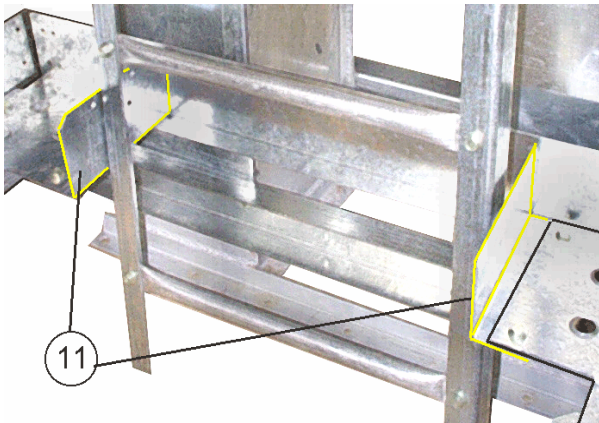
Step #2

Locate the Rear Ladder Toe Board (7) and position behind the ladder. Place the Floor Panel (8) on the secondary supports along with the Door Side Toe Board (9), and Door Front Toe Board (10). The toe boards should be mounted underneath the flooring but on top of the supports, and bolted into place. The Floor/Door Support Angles (6) can also be mounted on the underside of the flooring as shown.

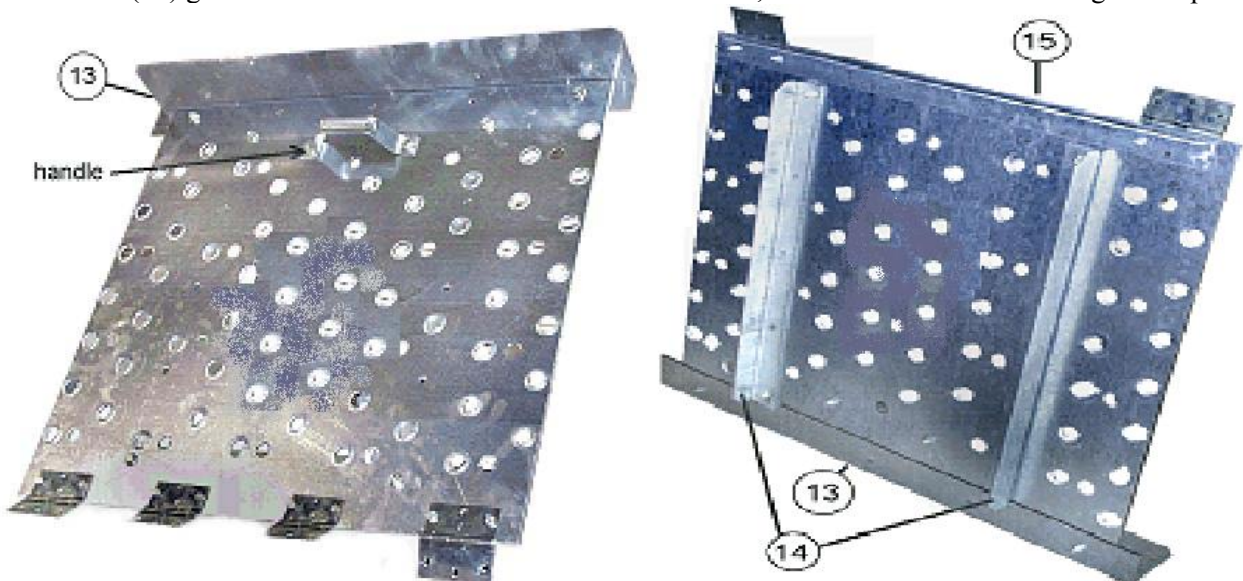


Step #3

Locate the Ladder Toe Boards (11) and position under the floor panel but on top of the rear ladder toe board. Bolting through the flooring and to the ladder. **Note:** bolting to the ladder will require drilling two 5/16 holes.

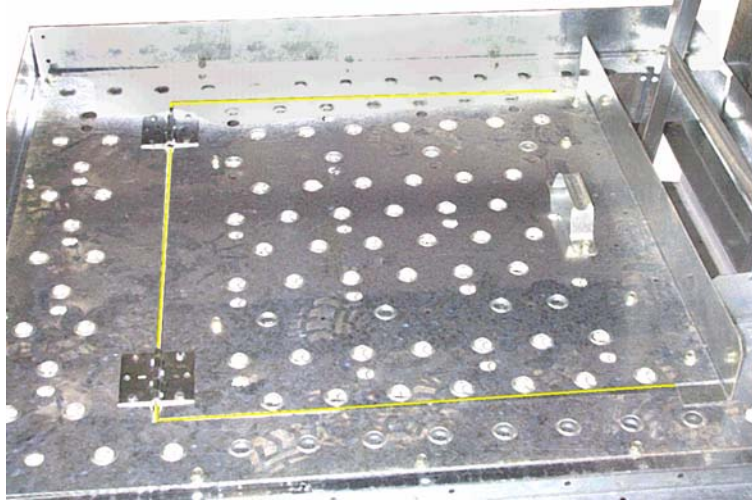
**Drill & Bolt Here****Step #4**

Now locate the Door Panel (12) bolting the Door Toe Board (13), Handle and Hinges to the Top. The Door Supports (14) and Hinge Stiffener (15) get bolted to the bottom. Note: use 1/4" x 1" bolts, locks and nuts to fasten hinges into place.



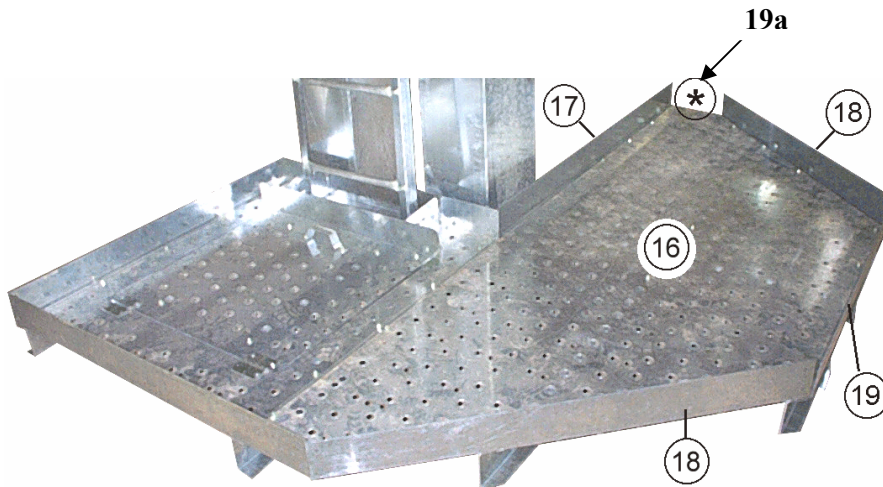
Step #5

Position the door assembly in the doorframe bolting the hinges down through the floor while installing the second Hinge Stiffener (15) to the underside before hand. Fasten using 1/4" x 1" bolts, locks, and nuts.



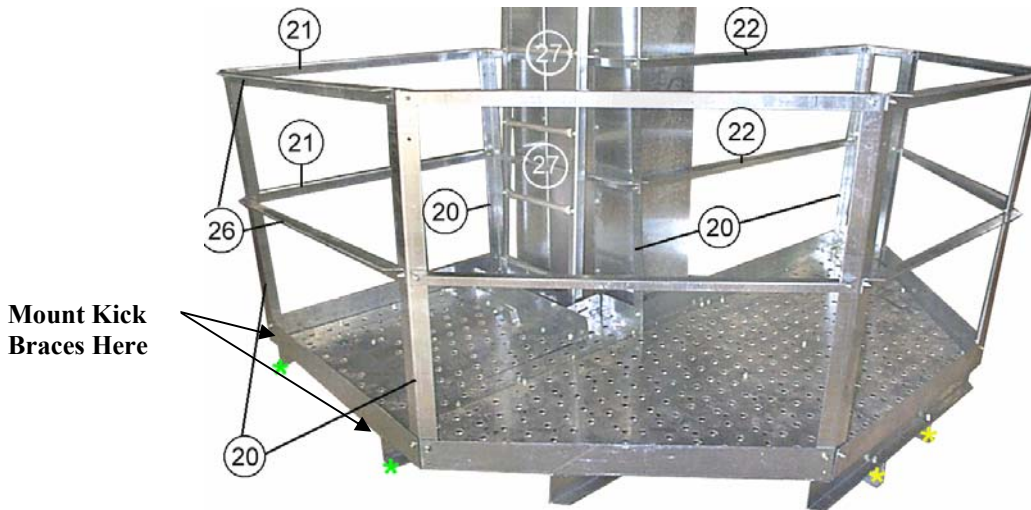
Step #6

Now locate the Work Area Floor Panel (16) and place on the support channels as shown. Under the floor position the Rear Work Area Toe Board (17), the (2) Front Angle Toe Boards (18), and the Front Work Area Toe Board (19). After bolting the floor panel on all edges the Short Work Area Toe Board (19a) can be installed.



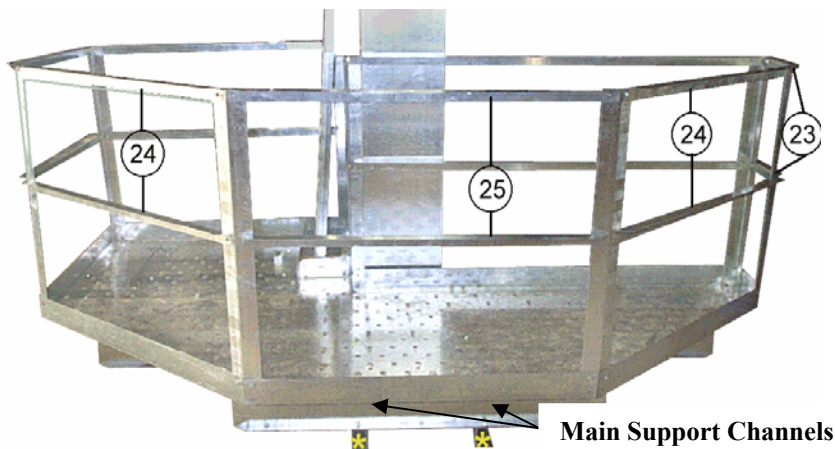
Step #7

Now locate the (8) Railing Uprights (20) and fasten at all corners of the platform. Proceed to bolt the two Door Side Handrails (21), two Rear Work Area Handrails (22), two Short Work Area Handrails (23), four Front Angle Handrails (24), two Front Work Area Handrails (25), two Door-Front Handrails (26), and two Rear Ladder Handrails (27) into place with the angle facing in as shown.



Step #8

The Door Side Kick Braces (29) can be installed by mounting the Kick Brace Support (30) to the trunking in the fourth set of holes down from the platform (use the hemlock bolts), the kick braces can then be mounted to the marked channels, and the ends of the support channel.



Step #9

Now bolt the Work Side Kick Braces (28) to the main support channels then extend down and bolt to the hemlock bolts in the trunking.

Caution: Never use handrails to access the distributor or any other part above the platform.