

# 18x8-30" Standard 20x8-30" Standard 12x8-30" Standard 18x8-30" Double 12x8-30" Double

## Rest Platform Assembly Manual

The Lambton Conveyor rest platform is intended to be used as a safety platform located ever 20' of ladder to prevent life threatening injuries in the case of a fall, any other use is strictly prohibited. It is the owner's responsibility to ensure all unauthorized personnel are unable to access these assemblies.

### Parts List

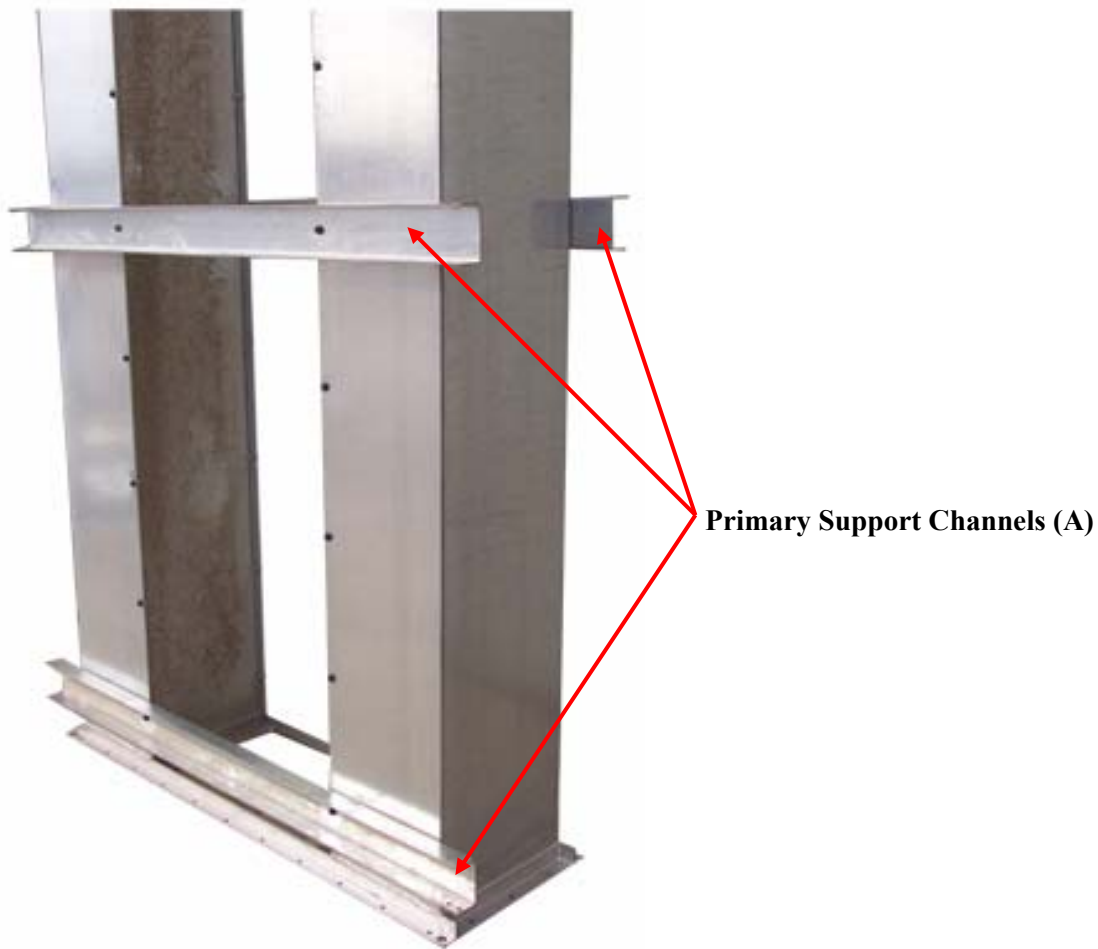
Part Name	Letter	Part#	Description	Length	Quantity
Primary Support Channel	A	Ure30188.00	C-Channel	60 7/8"	3
<b>* Secondary Support Channels; For 18x8-30" Standard For 18x8-30" Double For 12x8-30" Standard For 12x8-30" Double For 20x8-30" Standard</b>	<b>B</b>	<b>UWO30188.05</b>	<b>C-Channel</b>	<b>70 7/8"</b>	<b>2</b>
		<b>UWO30188.D05</b>		<b>88 7/8"</b>	<b>2</b>
		<b>UWO30128.D05</b>		<b>76 7/8"</b>	<b>2</b>
		<b>UWO30208.05</b>		<b>73 5/8"</b>	<b>2</b>
Secondary Door Channels	BB	Uwo30188.A5	C-Channel	43 3/4"	2
Kick Braces	C	urestp30.006	Angle	59 1/16"	2
Floor Panel	E	Uwo30188.01	Flat Sheet	58 7/8"x41 7/8"	1
Door Toe Board	F	Uservp16.008	Angle	31"	1
Door Handle	G	NA	NA	NA	1
Door Stiffeners	H	Uservp16.004	Angle	23"	2
Hinge Stiffeners	I	Uservp16.005	Angle	26 3/8"	2
Door Toe Boards (short)	J		Angle	7 3/4"	2
Door Supports	K	Uwo30188.11	Angle	24 "	2
Front / Rear Toe Board	L	Uwo30188.07	Angle	60 7/8"	2
Side Toe Boards	M	Uworkp30.016	Angle	42 1/2"	2
Rail Posts	N	Use30188.10	Angle	42"	4
End Handrails	O	Ure30188.10	Angle	41 7/8"	4
Front / Rear Handrails	P	Ure30188.19	Angle	60 7/16"	4
5/16" x 3/4" bolts	<b>All bolts used are Grade 8 strength ONLY</b>				
5/16" nuts					
1/4" x 1" bolts					
1/4"nuts					
1/4" lock washers					

\* **Note #1:** Only the secondary Support Channels(B) changes in length for different types of platforms included in this Manual. Please check the length of Secondary Support channel(B) according to the type of platform.

**Note #2:** unless otherwise stated all bolts used are 5/16" x 3/4".

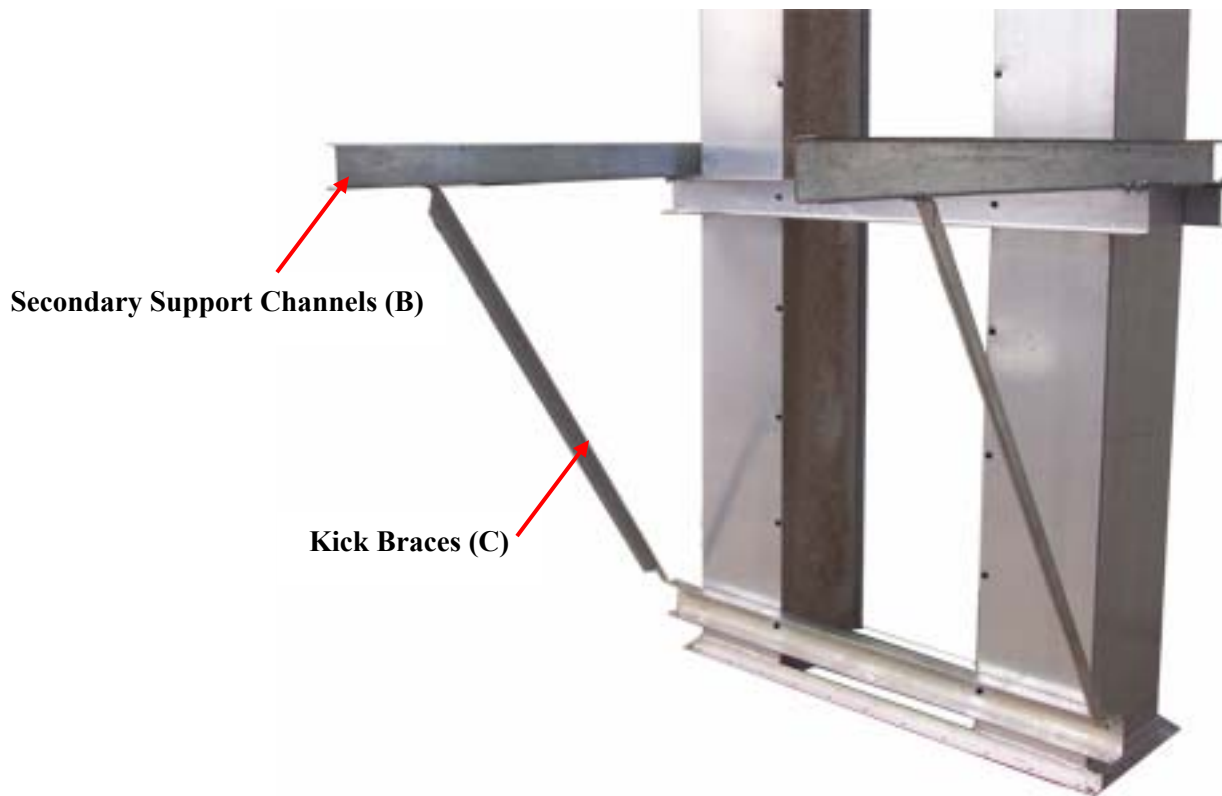
**Step #1**

When standing a Bucket Elevator in two or more sections, your Rest Platform should be mounted in an adequate position to mount the upper section of trunking (just below the joint). Start by bolting the Primary Support Channels (A) on both sides of the elevator trunking at the desired height of the rest platform. Also bolt the third Primary Support Channel (A) in the fourth set of holes down from the original support channels on the ladder side, as shown in the diagram.



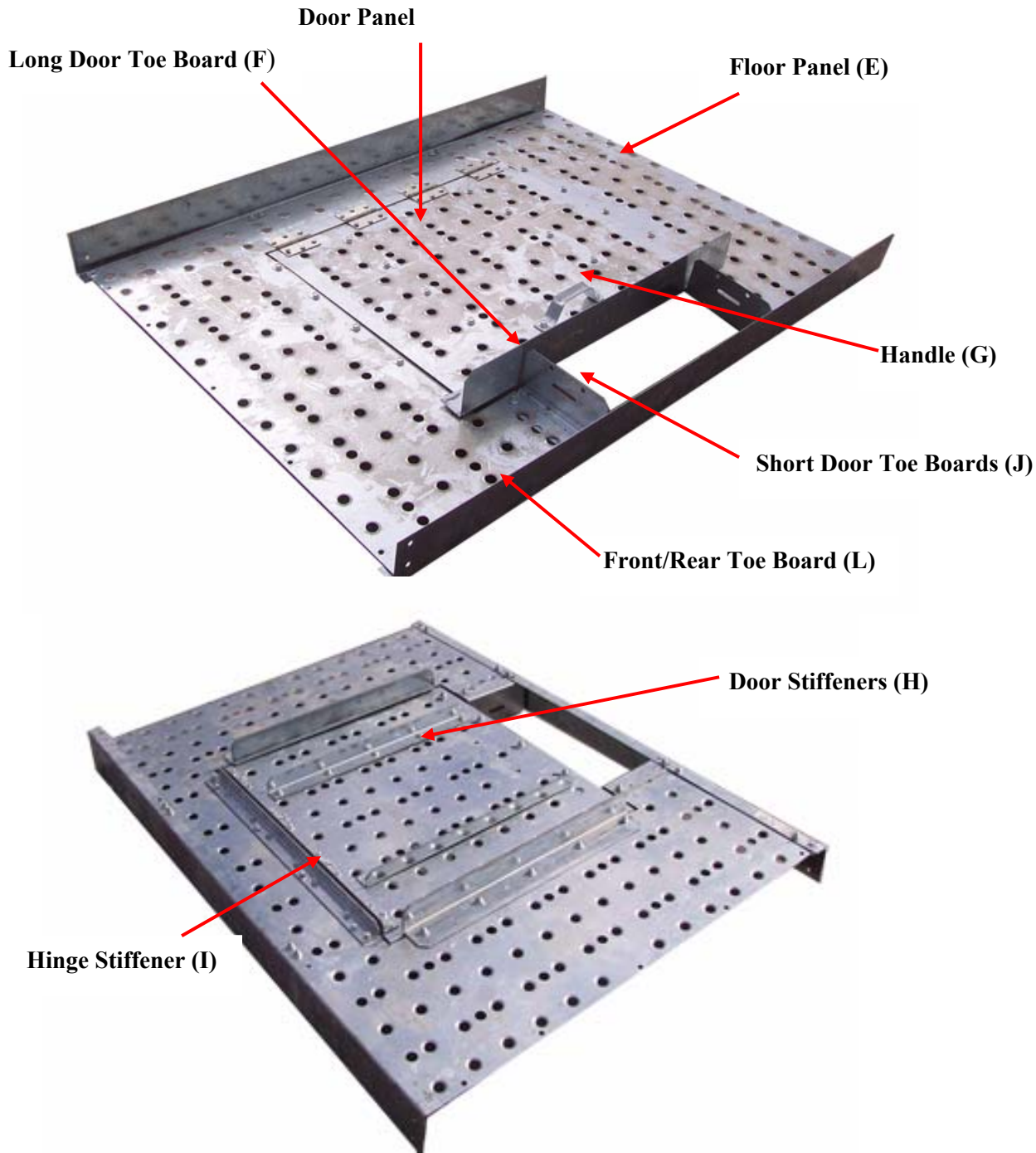
**Step #2**

Now bolt the (2) Secondary Support Channels (**B**) to the top of the primary support channels. The (2) Kick Braces (**C**) can also be mounted at this stage. They mount from the second bolt in on the Secondary Support Channel to the upper lip of the Primary Support Channel. **Note:** the kick brace ends require approximately a 45° bend to properly fit.



**Step #3**

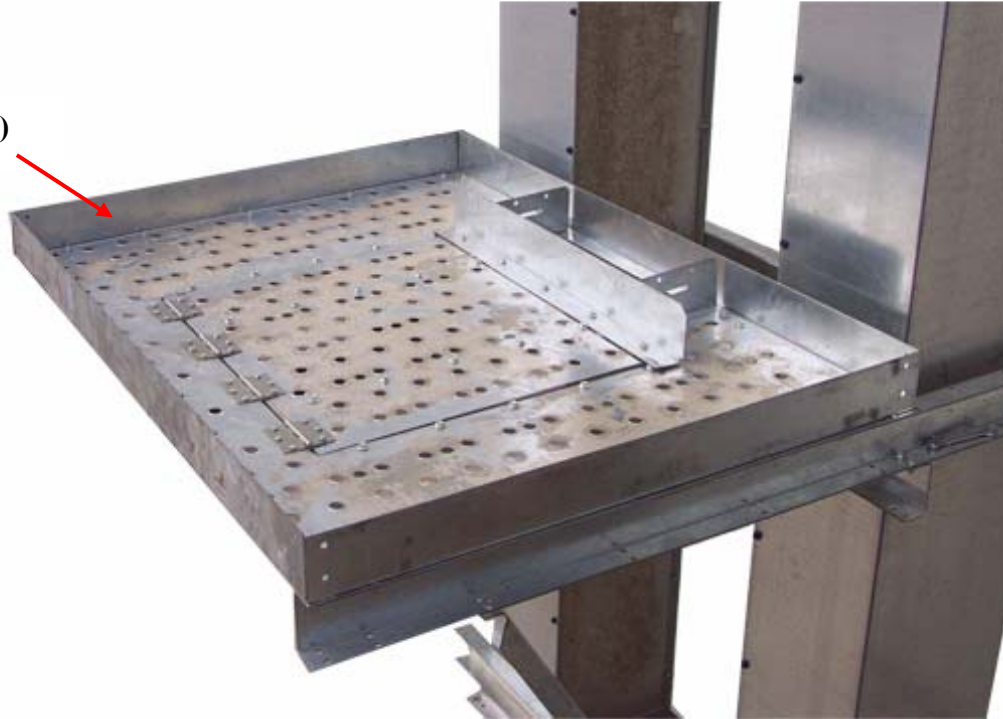
Now locate the Door Panel (D), and Floor Panel (E). The Door Panel will require 4 hinges, the Toe Board (long) (F), and Handle (G) mounted to the top. (2) Door Stiffeners (H), and a Hinge Stiffener (I) will bolt to the underside of the door. The floor requires, the door assembly to be mounted to the top. A Hinge Stiffener (I), (2) Door Toe Boards (short) (J), (2) Door Supports (K), and (2) Front/Rear Toe Boards (L) are bolted to the underside of the Main Floor Panel. **Note:** hinges are to be fastened using  $\frac{1}{4}$ " x 1" bolts, nuts, and lock washers.



**Step #4**

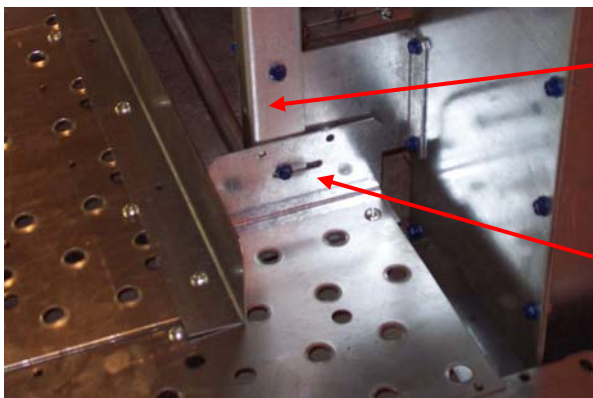
Now place the Floor Section on the secondary supports and bolt all four corners securely to insure it stays in place. The (2) Side Toe Boards (M) can also be installed at this stage beneath the floor section on the secondary supports as shown. All floor bolts can now be installed.

**Side Toe Board (M)**



**Step #5**

With the Door Panel & Toe Boards in place the ladder will need to be drilled and bolted to the short door toe boards on each side using (2) 5/16" x 3/4" bolts.



**Ladder**

**Toe Board (short)**

**Step# 6**

Install 4 Rail Posts (N) at the 4 corners of the platform, attach the (4) Short Handrails (O) to the Posts then attach the (4) Long Handrails (P) to the Posts.

