

16.04.2018

Contents

I. SECURITY MEASURES.....	2
II. WARNING SIGNS.....	3
III. WARNING.....	4
1 – MOUNTING FITTINGS GENERAL INFORMATION.....	5
1.1 GROUND SUPPORT CONNECTORS.....	5
BOLT TIGHTENING TORQUE TABLE.....	6
1.2 GROUND SUPPORT CARRIER FOOT PARTS	7
2. GROUND SUPPORT ASSEMBLY	16
2.1 MODULE INSTALLATION	17
2.2 UNDERGROUND SUPPORT AND WALKING JOINT ..	20
2.3 GROUND SUPPORT AND BUTTERFLY	24
3. SUPPORT CARRIER FOOT FROM SILO	25
3.1 Silo Support Parts.....	25
3.2 Silo Support Assembly	30
4 - WARRANTY	35

I. SAFETY PRECAUTIONS

Our aim; you and the people around the steel construction is provided after the safety of the installation process. This guide helps you find solutions to problems you may encounter.

As the owner / employee, you are responsible for all material damage, serious injury or death that may occur as a result of non-observance of the safety instructions reported here. Do not make any changes to the product.



It is a safety warning symbol. You must comply with all safety rules to avoid possible injury or death.

Compliance with Safety Instructions - Reading the Installation Guide



Workers in the vicinity of construction should read this manual very carefully. This manual is sent to the owner with the equipment. Failure to read the manual is misuse of the product. Make sure that the safety warning labels on the product are not damaged. Missing / damaged warning labels are available from the manufacturer.

Learn how to use the equipment correctly, do not allow unauthorized use. Perform regular maintenance of all your equipment, any unauthorized intervention will shorten the life of the machine. If you do not understand any part of this manual, it is recommended to contact your supplier.

Safe Maintenance - Maintenance of Equipment and Work Area



Make sure you understand the business plan well before starting work. Keep work area clean and dry. Never lubricate, maintain, or calibrate a running machine. Keep your hands, feet and clothing away from moving parts.

Make sure all parts are assembled and in working order. Have faults remedied immediately and worn or broken parts replaced. Remove oil, dust and dirt from equipment.

Gözlerin Korunması



Use of Protective Clothing

Wear clothes that are not suitable for your job. Remove all jewelry. If you have long hair tie and Collect. Wear safety glasses to protect against sparks.

This product is only used for grain transport. Misuse for other purposes.

Wear gloves to protect your hands from sharp corners of plastic or steel parts.



Use steel toe shoes against any heavy objects that might fall on your feet.

Use a respirator to protect against dust and fumes containing potentially toxic gases.



Wear a hard hat to protect your head.

I. WARNING SIGNS

There are many warning signs on the equipment that indicate the most important hazard risks. These; It contains very important information that you need to know as owner or user. This information is provided to ensure personal safety and to prevent possible product malfunctions..

It is the responsibility of the owner / user to comply with the safety warnings issued in this manual and to inform everyone working on the conveyor. Failure to observe and ignore the warning signs shown below is an incorrect use of the product.

Prior to installation / use / maintenance of the product; examine these warning signs carefully. Failure to do so may result in injury or death..



	Sign of danger, serious injury if not avoided indicates very important conditions that can result in death or death..
	Warning sign, serious injury or death if not avoided Indicates a hazardous situation at risk of.
	A caution sign indicates situations that, if not avoided, could result in simple or moderate injury.
	A caution sign indicates a risk of material damage if not avoided.



Security Tags

Safety labels on different parts of the construction; must be read carefully by all personnel working around the equipment during the installation, use and maintenance period

WARNING

Water-Sensitive Materials - Read this statement carefully

Check the materials and notify the carrier immediately if they are damaged. White rust is the corrosion attack of the zinc coating caused by the presence of water. Wherever white rust is present, the life of galvanized steel will be shortened.

If water enters the packaged steel or if condensation occurs between the elements, the packages must be opened, the parts separated and all surfaces dried.

If items are to be installed within 10 days:

Collect packaged items at a location high enough to allow air circulation under the package and prevent water from entering.

Store tip 1 at least 8 "(20.32 cm) higher than the other end. Support long bundles in the center. Cover rainwater with a tarpaulin to prevent it from entering the package, allowing air to circulate between the draped edges and the floor.

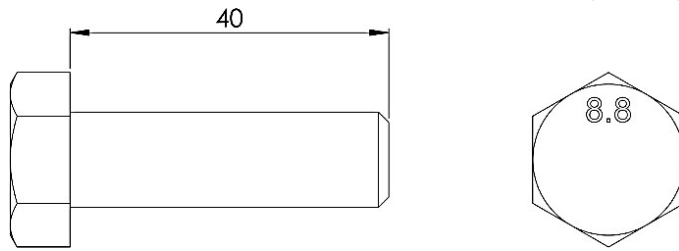
If items will not be installed within 10 days:

Store in a dry, closed warehouse. Storage not recommended for more than 6 months. If white rust appears after the products have been delivered to you, notify the site manager immediately. Damage caused by improper storage is the buyer's responsibility.

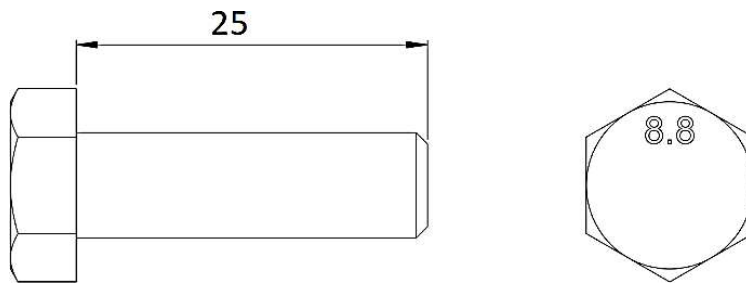
– MOUNTING FITTINGS GENERAL INFORMATION

1.1 UNDERGROUND SUPPORT FITTINGS

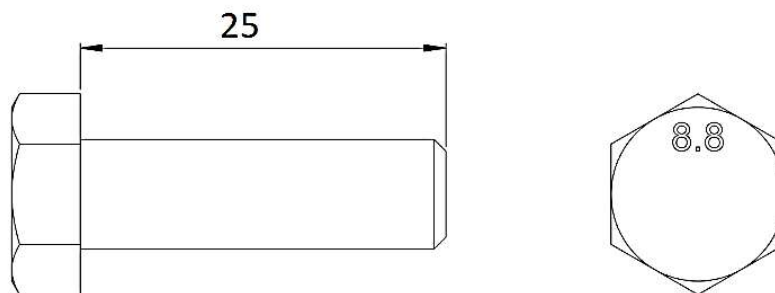
1.2 1.2 (M12x40) Hex Head Bolts (8.8 Quality) - [TM.602.1.12.40.88.0933]



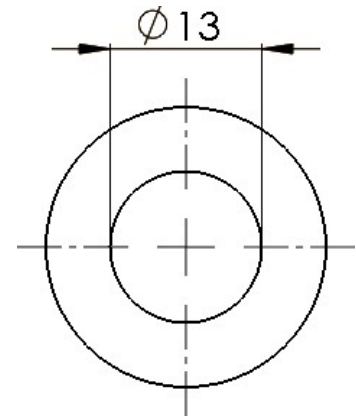
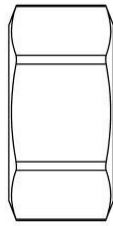
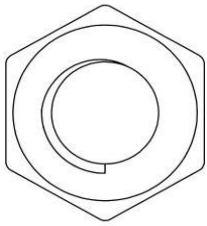
(M12x25) Hexagon Head Bolt (Quality 8.8) - [TM.602.1.12.25.88.0933]



(M10x25) Hexagon Head Bolt (Quality 8.8) - [TM.602.1.10.25.88.0933]



Note: M10x25 "8.8" quality bolts are used for silo support and strut mounting.



Note: You must use the bolts and nuts shipped to you.

Use the bolts provided by Any changes made by unauthorized persons, unaware of unauthorized and untreated bolts, are strictly prohibited and will void the warranty..

BOLT TIGHTENING TORQUE TABLE

BOLT	BOLT TIGHTENING TORQUE			
	Minimum Tork		Maximum Tork	
M8	15 ft.lb	20 Nm	20 ft.lb	27 Nm
M10	35 ft.lb	47 Nm	42 ft.lb	56 Nm
M12	95 ft.lb	128 Nm	105 ft.lb	142 Nm
M18	200 ft.lb	270 Nm	208,7 ft.lb	283 Nm

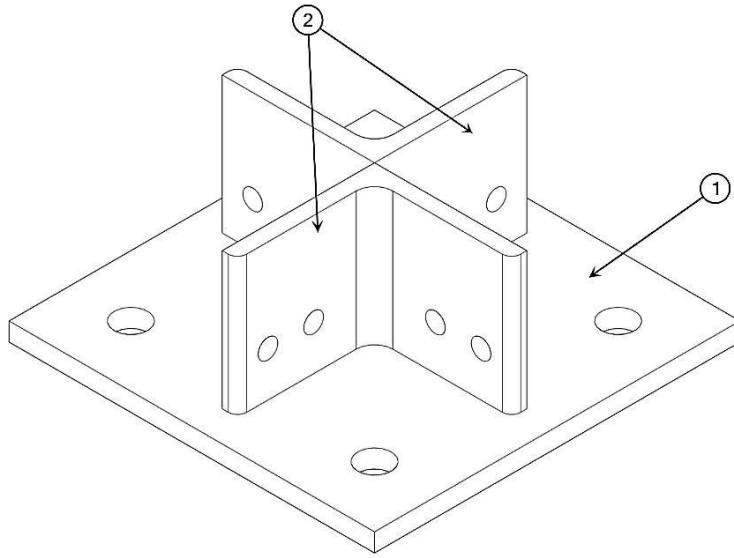
The data in the table has been created in order to guide the user considering normal conditions.

Table data are based on the following basic assumptions;;

- Bolts are new, unlubricated and uncoated.
- The yield strength of the bolt is 90%..
- Friction coefficient of bolts is taken as 0.2.

1.3 Foot Parts

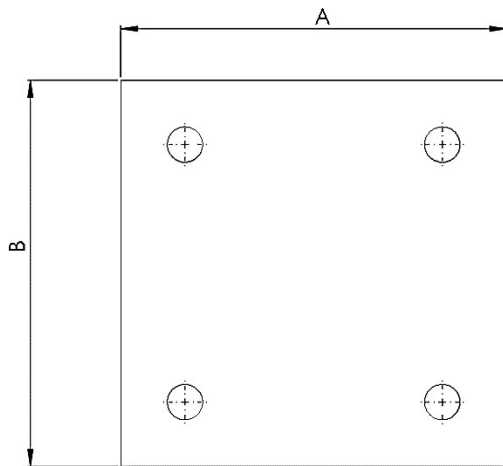
Şekil 1.2.1 Ground Support Anchor



Tablo 1.2.1 Ground Support Anchor

Pos Id	Part Description	Piece
1	Ground Support Carrier Anchor Plate	1
2	Anchor Brackets	2

Şekil 1.2.2 Ground Support Anchor Plate

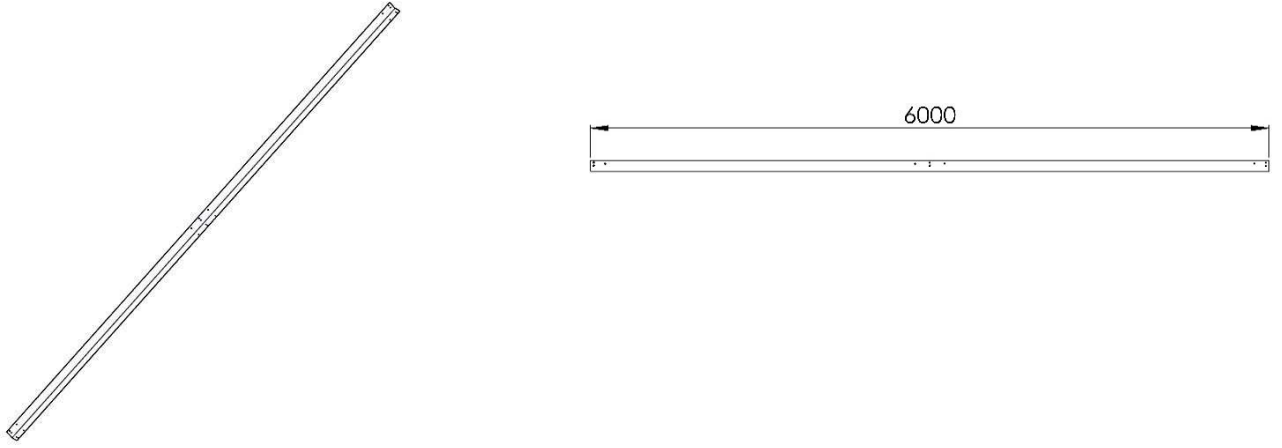


Tablo 1.2.2 Ground Support Anchor Plate Dimensions

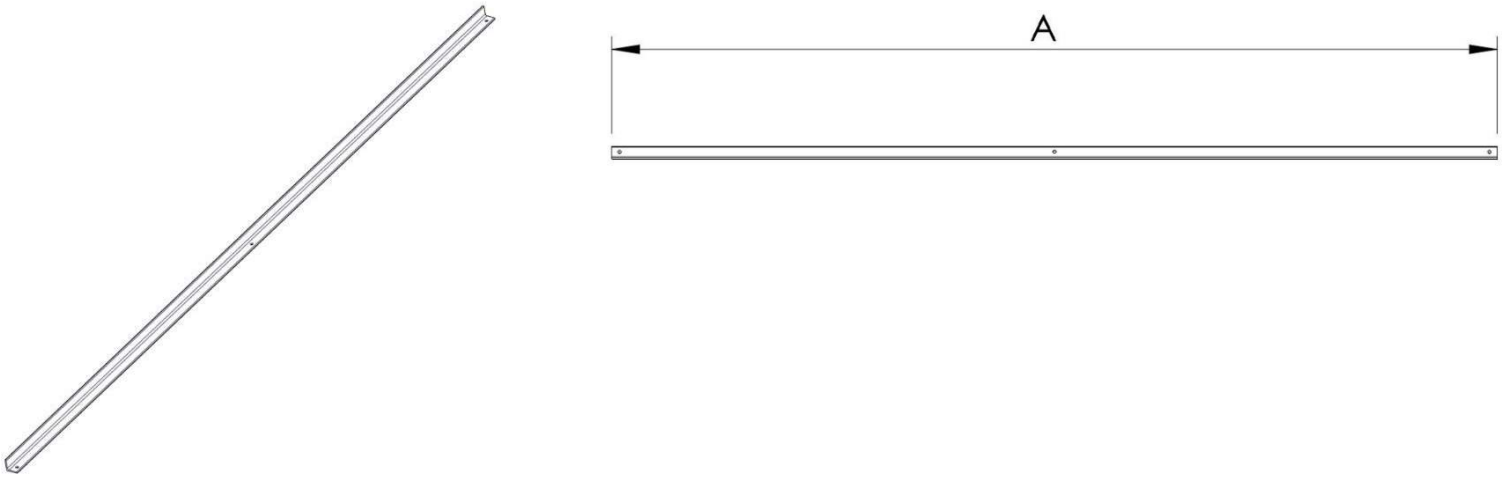
Anchor Angle Size	Size "A"	Size "B"
60 mm	160	160
70 mm	180	180
100 mm	240	240

Tablo 1.2.2 'The anchor plate dimensions are indicated. Plate sizes vary as shown. You can find the anchor angle and the plate dimensions in Table 1.2.2..

Şekil 1.2.3 Ground Support 6m Main Column



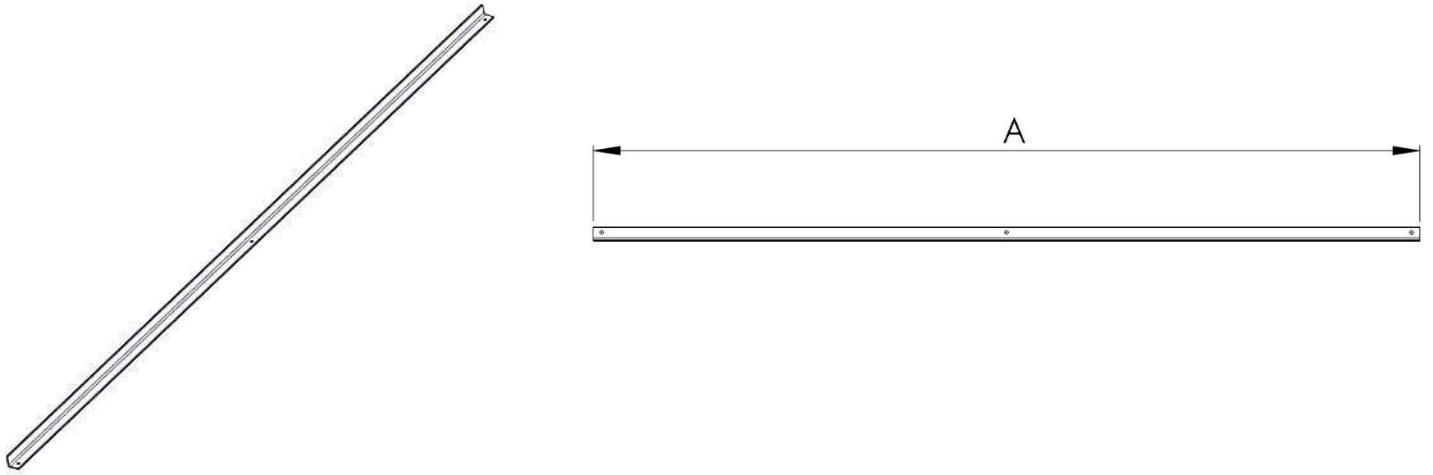
Şekil 1.2.4 Ground Support Angle Cross Connection



Tablo 1.2.3 Ground Support Cross Connection Table

Front Size	Size "A"
1050 mm	1283 mm
1250 mm	1440 mm
2000 mm	3370 mm
4000 mm	4800 mm

Şekil 1.2.5 Ground Support Angle Side Cross Connection

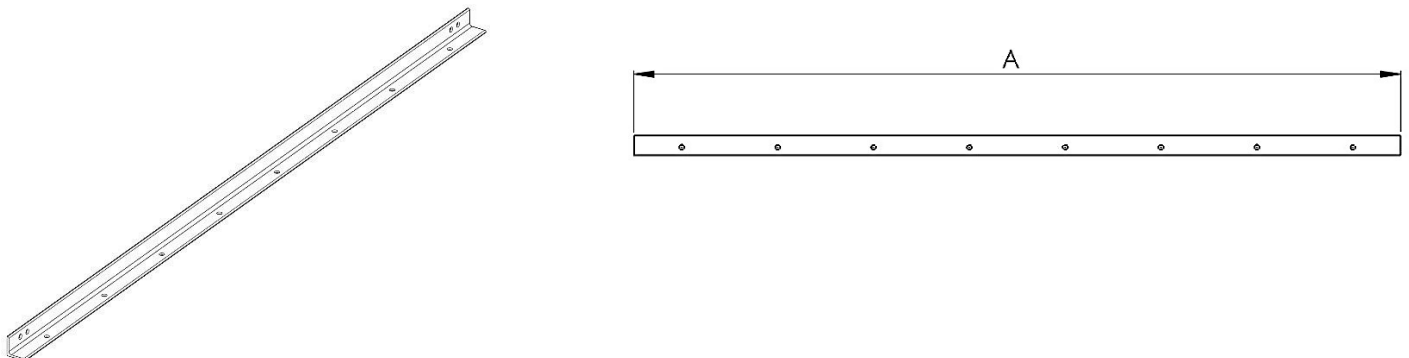


Tablo 1.2.4 Ground Support Side Cross Connection Table

Front Size	Size "A"
750 mm	1082 mm
750 mm	1082 mm
1000 mm	2930 mm
2000 mm	3370 mm

Cross-dimensions vary according to where it is used and the type of support from the ground. According to facade size The dimensions of the crosses are given in Tables 1.2.3 and 1.2.4. Long diagonals shall be mounted on the long part of the support and short ones on the other part. You are kindly requested to pay attention to this distinguishing feature..

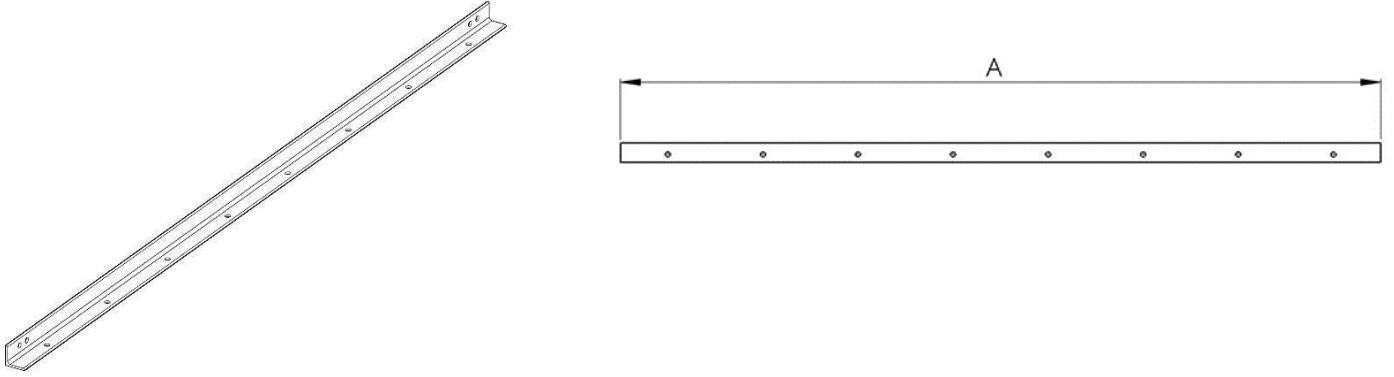
Şekil 1.2.6 Ground Support Insertion Bracket



Tablo 1.2.5 Ground Support Insertion Bracket

Front Size	Size "A"
1050 mm	1000 mm
1250 mm	1200 mm
2000 mm	2000 mm
4000 mm	4000 mm

Şekil 1.2.7 Ground Support Insertion Bracket

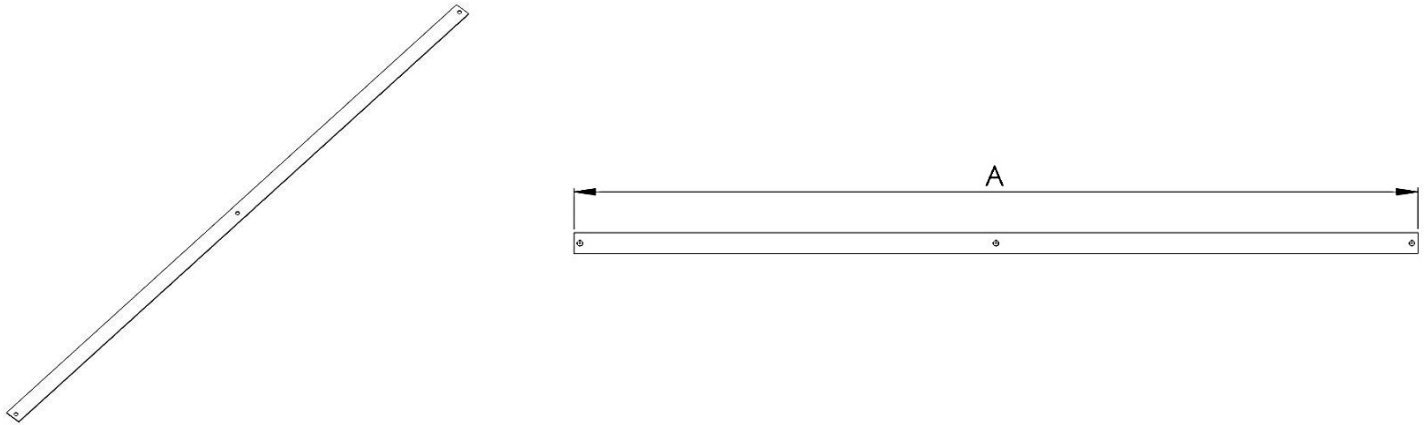


Tablo 1.2.6 Ground Support Insertion Bracket

Cephe Ölçüsü	Size "A"
750	750 mm
750	750 mm
1000 mm	1000 mm
2000 mm	2000 mm

Tablo 1.2.5 and 6 are shown in the dimensions of the insertion brackets. Cross dimensions are given according to the facade dimensions. By observing these dimensions, it will be easily understood where the crosses will be mounted. These parts will be assembled with M12x40 Hexagon "8.8" quality nut, double sided washer and M12 "8" quality nut.

Şekil 1.2.8 Ground Support Internal Cross Plate

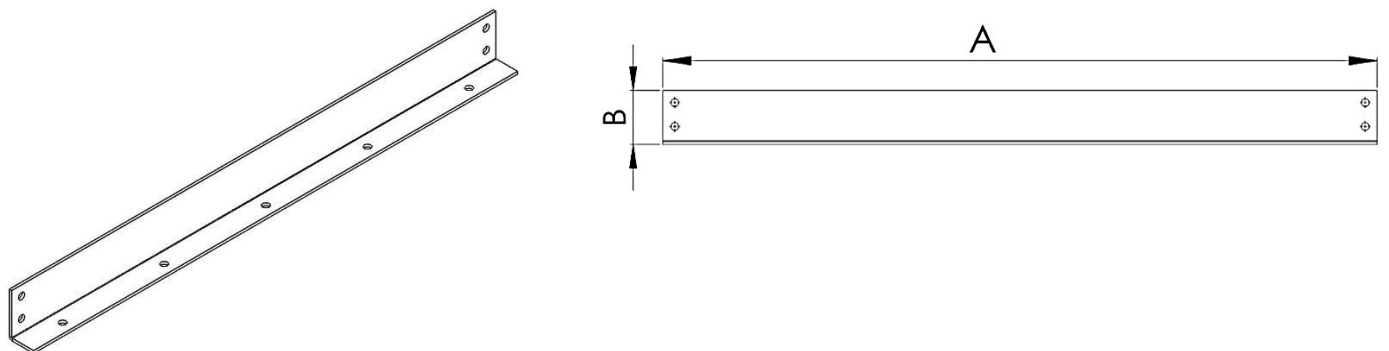


Tablo 1.2.7 Floor Support Internal Cross Plate Dimensions

Front Dimensions	Size "A"
1050 x 750 mm	1200 mm
1250 x 750 mm	1358 mm
2000 x 1000 mm	2075 mm
4000 x 2000 mm	4300 mm

Ground support internal cross-dimensions are shown in Table 1.2.7. Support facade from the place to be installed
The appropriate internal cross is sent to you according to the dimensions, but confirm the suitability by comparing with the dimensions in the table above. If an unsuitable part has been delivered to you, notify the authorized personnel.

Şekil 1.2.9 Ground Support Column Insertion

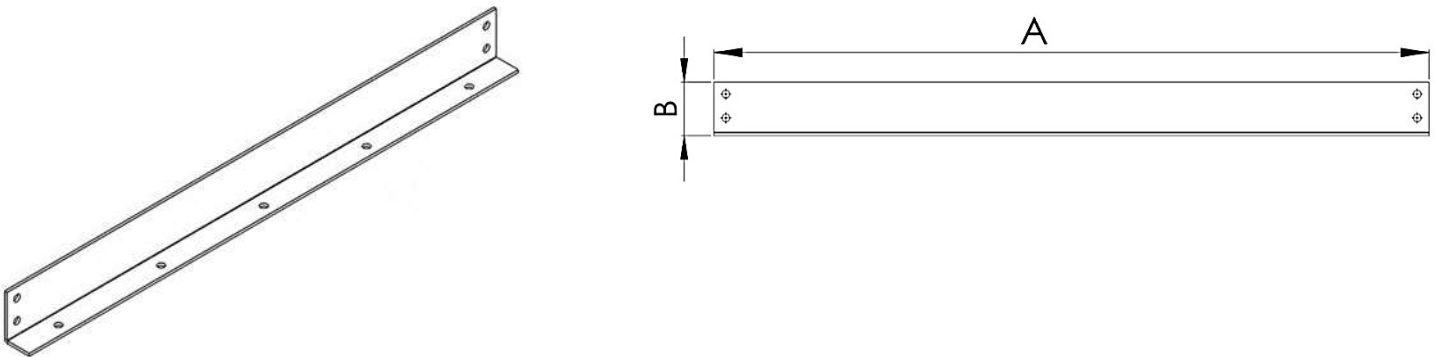


Tablo 1.2.8 Floor Support Column Insertion Dimensions

Front Size	Size "A"	Size "B"
1050 mm	1000 mm	90 mm
1250 mm	1200 mm	90 mm
2000 mm	2000 mm	50 mm
4000 mm	4000 mm	50 mm

The dimensions of the ground support intermediate column spacer are indicated in Table 1.28. The extent to which parts will be used will vary depending on the type of support from where you mount it. Diameter of façade dimensions the table above.

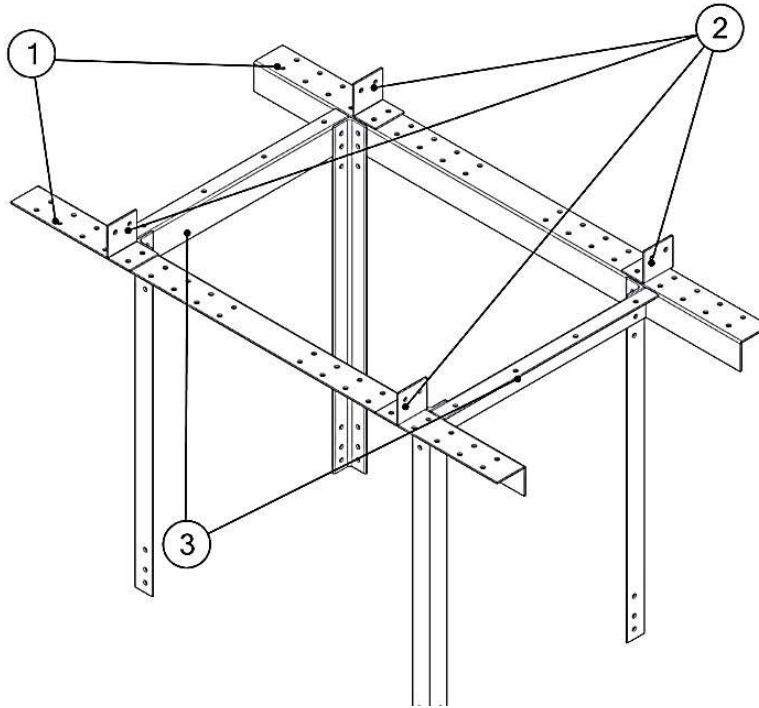
Şekil 1.2.10 Floor Support Column Insert Side Sheet



Tablo 1.2.9 Column Insert Fittings

Front Size	Size "A"	Size "B"
750 mm	750 mm	90 mm
750 mm	750 mm	90 mm
1000 mm	1000 mm	50 mm
2000 mm	2000 mm	50 mm

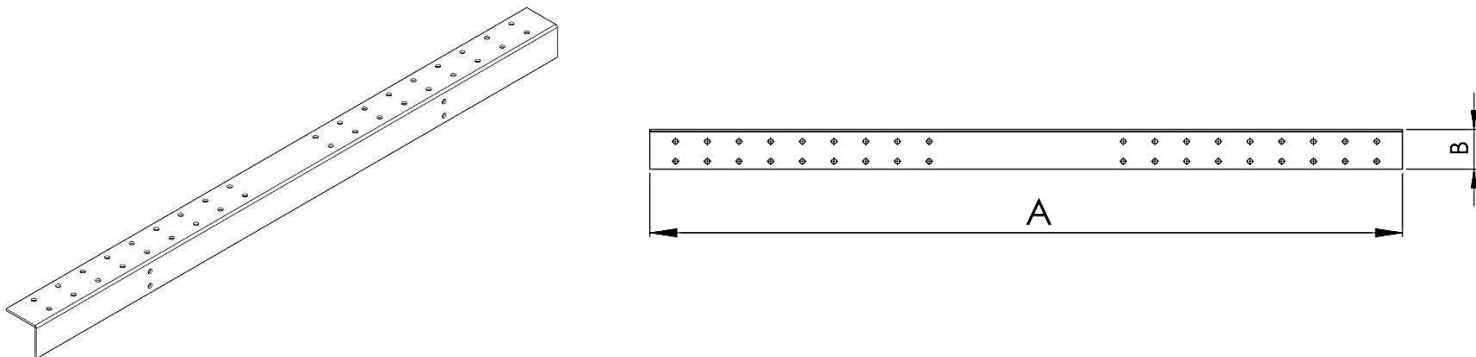
Şekil 1.2.12 Single Cross Ground Support and Walkway Fittings



Tablo 1.2.10 Light Type Ground Support and Walkway Fittings Definitions

Image No	Part Description
1	Ground Support Carrier Foot Top Connection Profile
2	Ground Support Carrier Foot Walkway Connector
3	Floor Support Carrier Leg Column Insert Side Sheet

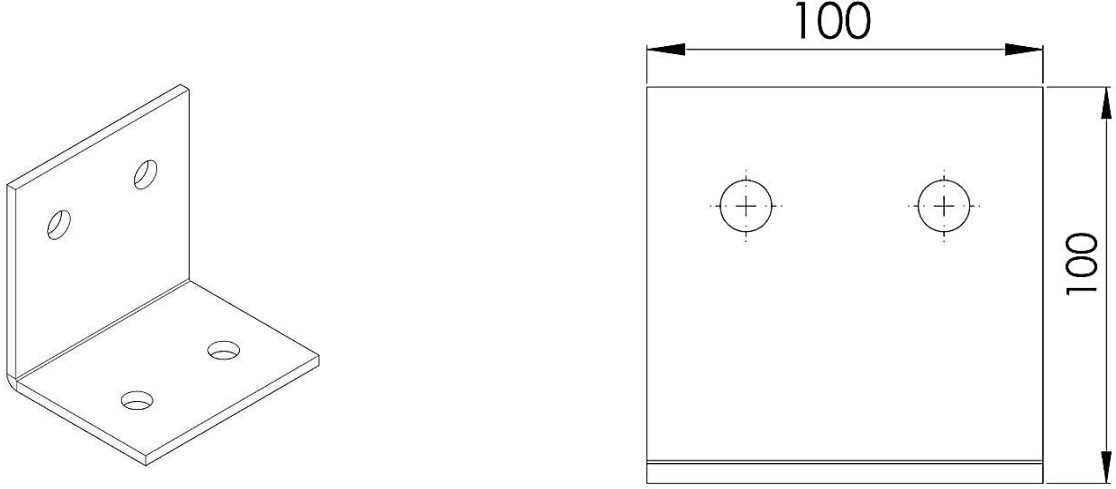
Şekil 1.2.13 Top Link Profile



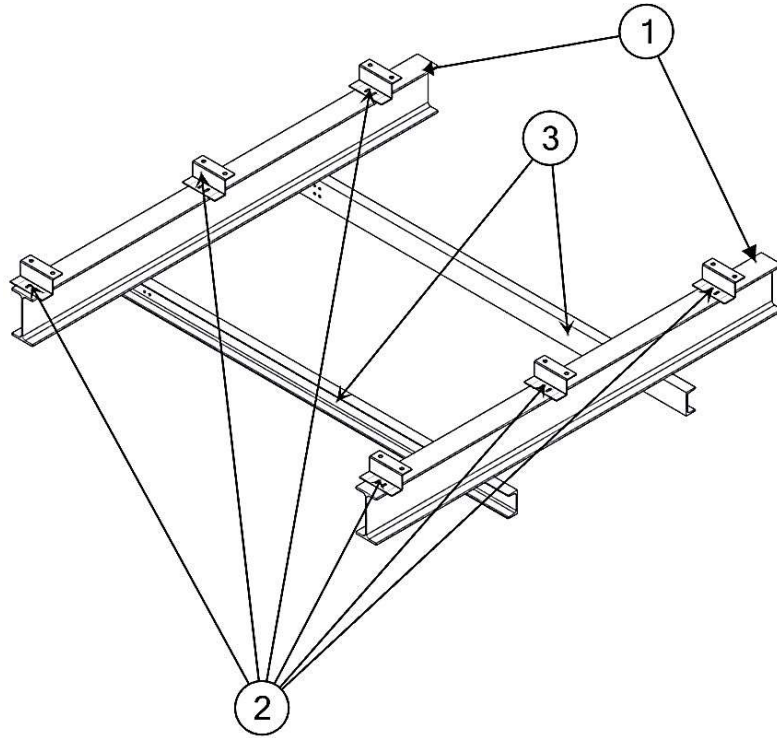
Tablo 1.2.11 Top Connection Profile Dimensions

Cephe Ölçüsü	Size "A"	Size "B"
1050 mm	1700 mm	100 mm
1250 mm	1900 mm	100 mm

Şekil 1.2.13 Ground Support and Walkway Fitting



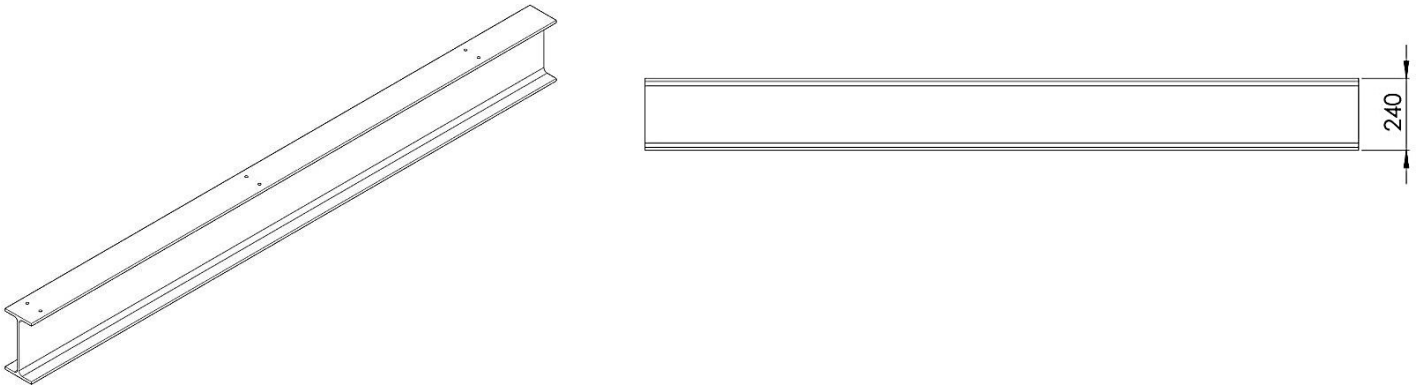
Şekil 1.2.14 Profiled Ground Support and Walkway Fittings



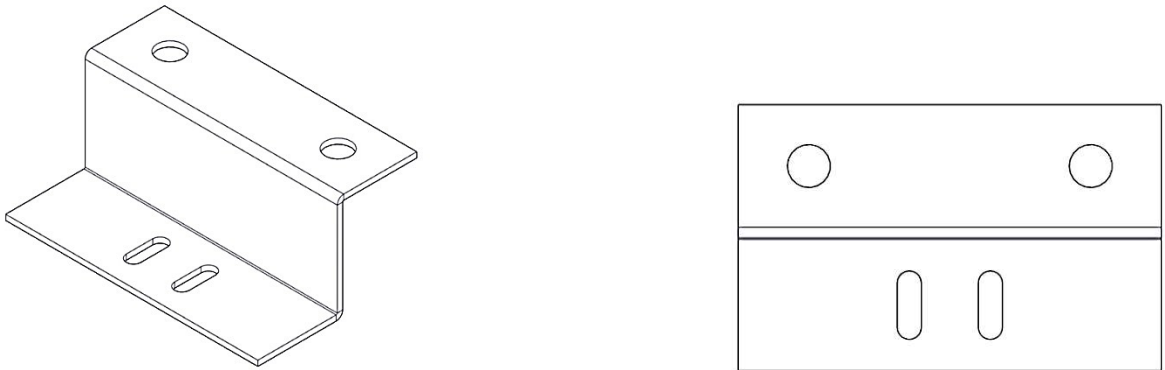
Tablo 1.2.12 Profiled Ground Support and Walkway Fittings Definitions

Image No	Part Description
1	Heavy Duty Walkway Support Kit IPE
2	Heavy Duty Walkway Support Kit IPE Connector
3	Ground Support Carrier NPU Profile

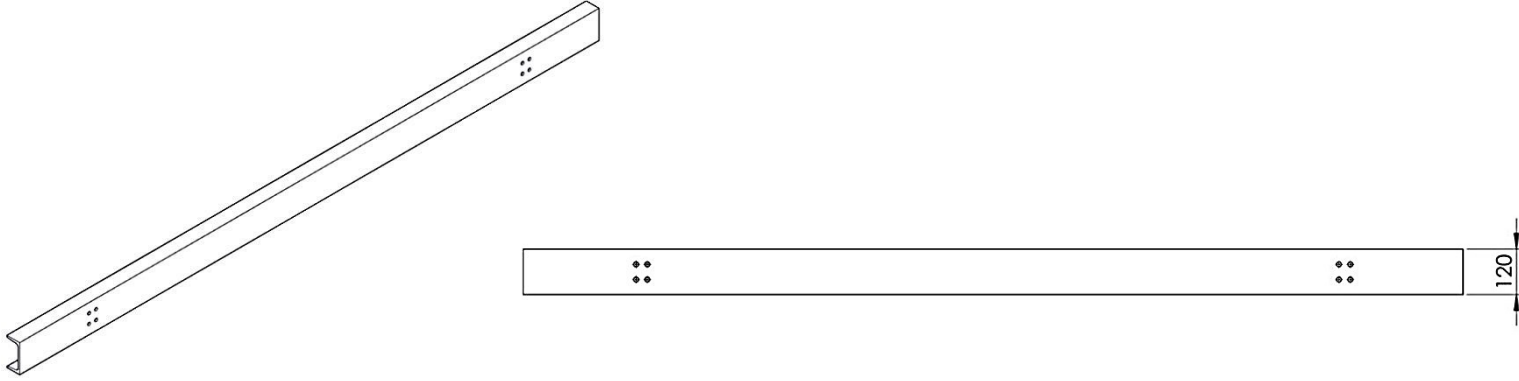
Şekil 1.2.15 Profiled Walkway Support Kit IPE 240



Şekil 1.2.16 Profiled Walkway Support Kit IPE Connector



Şekil 1.2.17 Floor Support Carrier Foot Profile NPU 120



2. FLOOR SUPPORT ASSEMBLY

Before starting the installation, make sure which type of support is to be installed. Make sure that the check list and materials sent to you are compatible. If you have received any wrong or missing products, immediately report the situation to the site supervisor and WOODEN SILO. Do not use products from other suppliers. Use the nuts, bolts, washers, etc. provided to you and notify the WOODEN SILO immediately in case of missing and incorrect cases. LAMBTON CONVEYOR shall not be responsible for any errors and situations that may occur due to any action taken other than these methods..

Before starting the installation, the concrete must be flat and poured according to the norms. According to the values given to you in the ground survey should be used concrete.

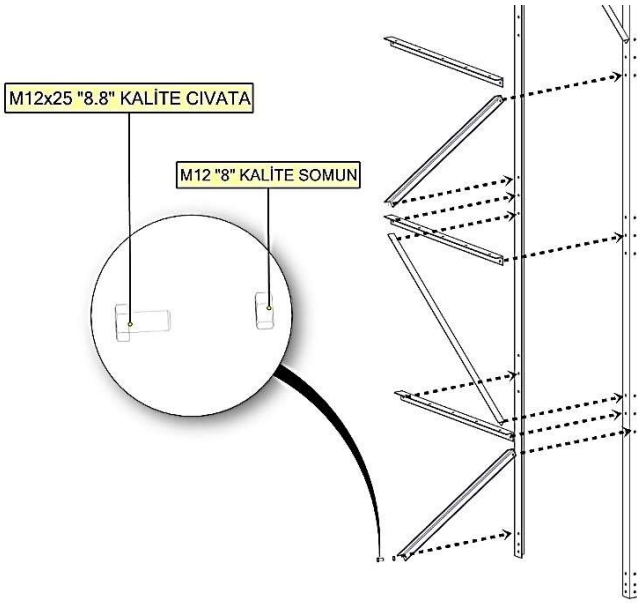
Use only the anchor package supplied to you. Anchors will be sent to you according to the type of support from the ground. In this respect

follow the drawings and drawings provided to you. In case of defective materials, please contact LAMBTON CONVEYOR.

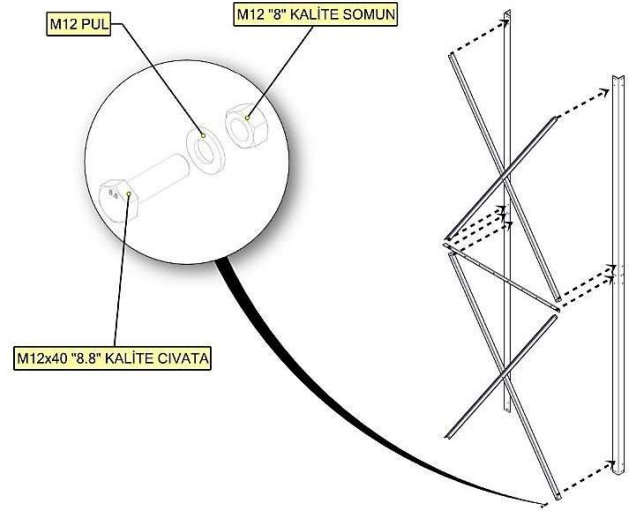
Read this installation manual carefully. Pay attention to the necessary Warning and Danger points in order to avoid any mistakes and possible accidents. Failure to do so may result in injury or damage to equipment.

2.1 MODULE INSTALLATION

Şekil 2.1.1 6 Meter Column and Single Cross



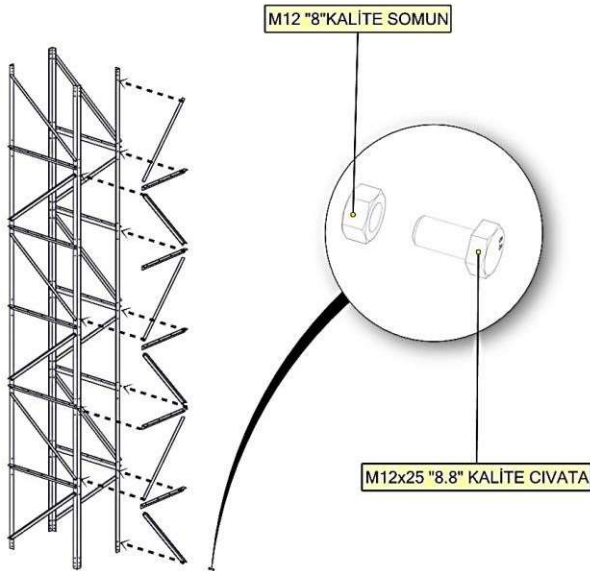
Şekil 2.1.2 6 Meter Column and Double Cross



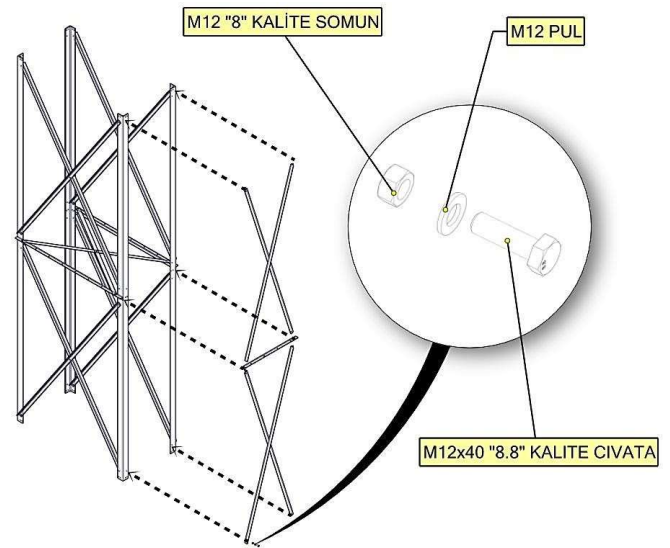
Şekil 2.1.1 ve Şekil 2.1.2 'as shown in the cross-section of the assembly process and 6 (six) meters of main columns start with The main columns and crosses are tightened by means of bolts and nuts sent to you in accordance with the torque values. Each module consists of six meters. Between the diagonally horizontal spacer brackets are used.

Attention should be paid to the orientation of the columns. After this process, the same application is applied to the opposite column. For the other façade, diagonally and spacer brackets are assembled with suitable bolts and nuts. The opposite part of these small diagonals is also assembled in the same way. Detailed in Figure 2.1.3 and Figure 2.1.4.

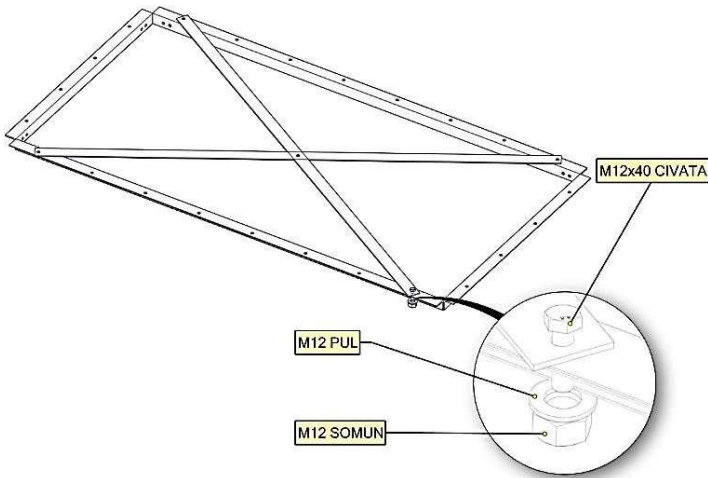
Şekil 2.1.3 Six Meter Column Side Single Cross



Şekil 2.1.4 Six Meter Column Side Double Cross



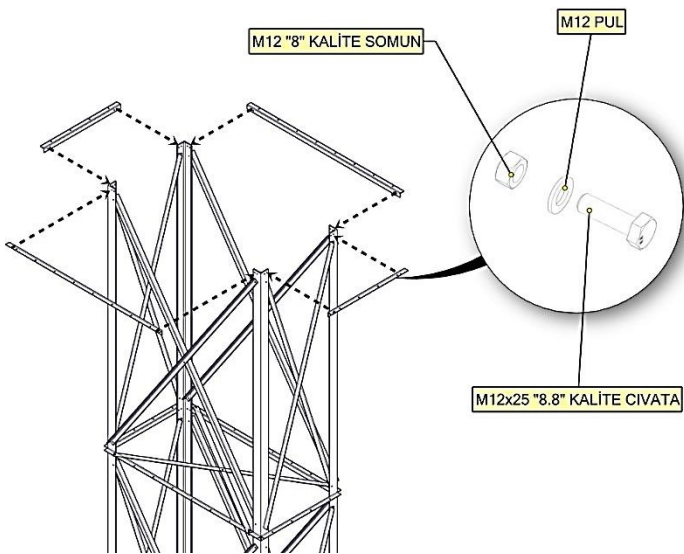
Şekil 2.1.5 Internal Cross Mounting



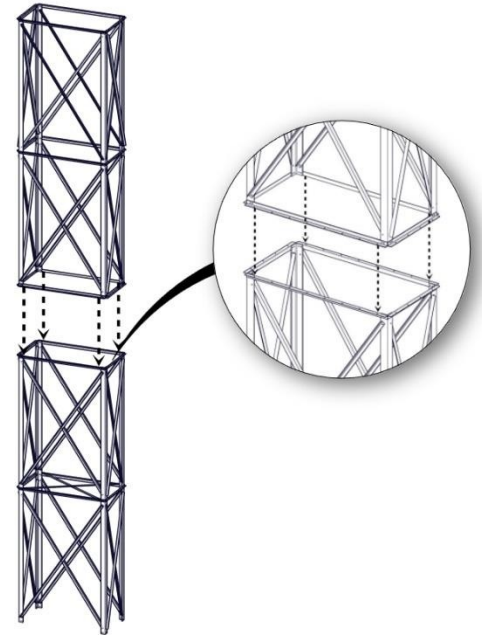
Inner diagonals As shown in Figure 2.1.5, the intermediate compartment

Mounted on angle brackets. These inner crosses bolts are spaced evenly at 2 pairs per six-meter module on single crossed supports. In the case of double crossed supports, these inner cross meter to be assembled as a pair.

Şekil 2.1.6 Double Cross Insert

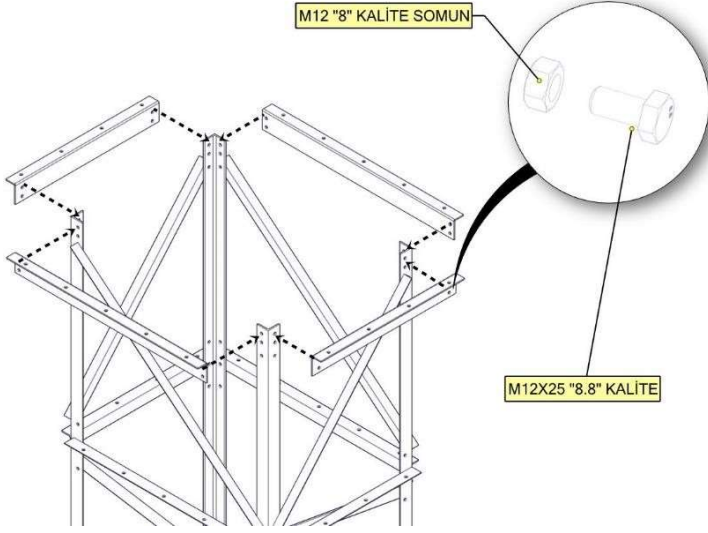


Şekil 2.1.7 Double Cross Module Connections

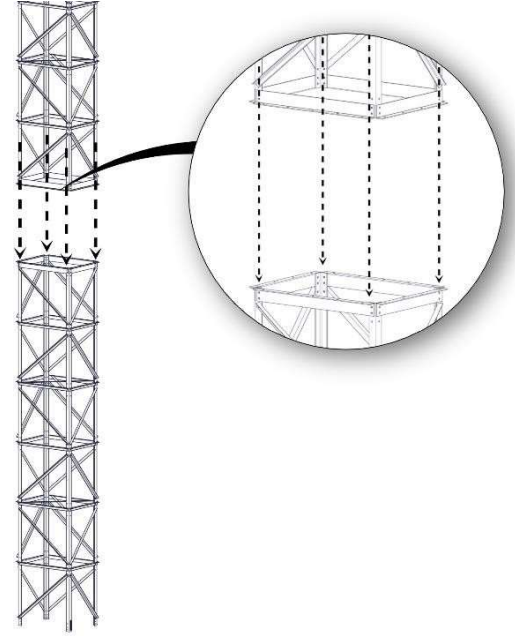


The spacers are indicated in Figure 2.1.6, with a straight inverse at the end of each carrier column (column length 6 m.) With respect to the length of the support from the ground. The spacers are bolted to each module independently. Other modules are installed in the same way according to the support length from the ground. Lifting each other by crane as in Figure 2.1.7 bolts to each other. It is made of M12x40 "8.8" quality bolt, M12 Flat washer and M12 "8" quality nut for double cross ground support. When it comes to the last part, according to the length of the support from the ground, the length of the columns and crosses will be shortened. The short section is assembled with the same techniques and placed on top of the others with the help of crane.

Şekil 2.1.8 Single Cross Spacer



Şekil 2.1.9 Single Cross Module Combinations

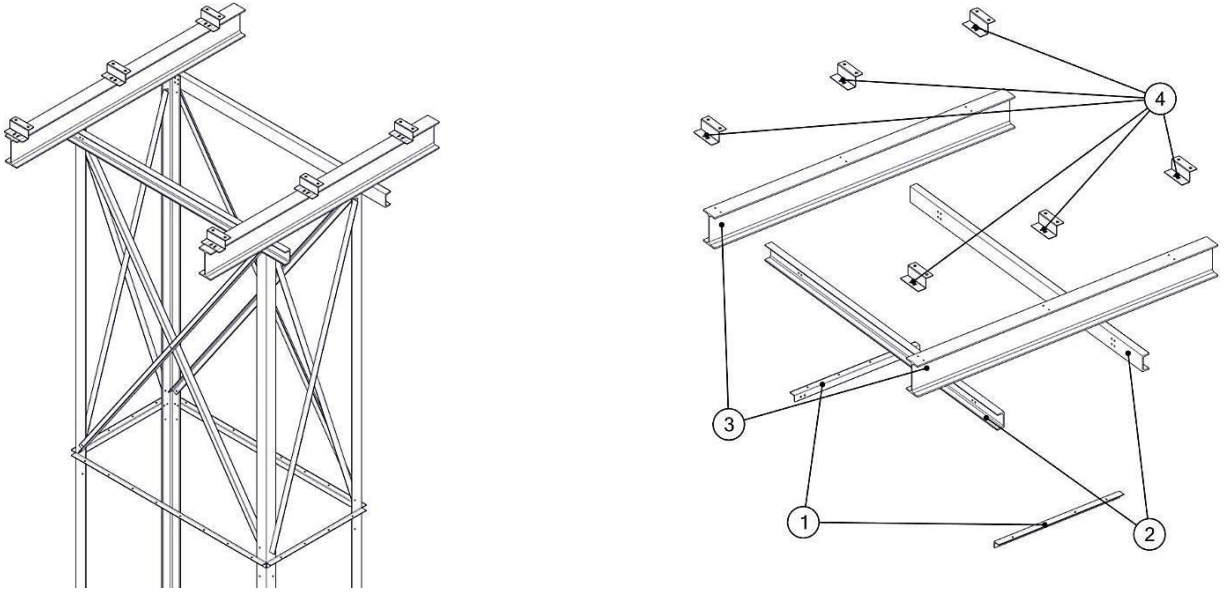


For single transverse floor support module combinations, the path to be followed is exactly the same as for double transverse floor support. First, the insert is tightened with the help of bolts as shown in Figure 2.1.8. The other modules are then mounted independently. Each module to be joined is lifted by means of crane and assembled from each other by means of intermediate joints.

The installation of the single crossed floor support is made by using M12x25 "8.8" quality bolt and M12 "8" quality nut. When it comes to the last part, according to the length of the support from the ground, the length of the columns and crosses will be shortened. The short section is assembled with the same techniques and placed on top of the others with the help of crane.

2.1 UNDER SUPPORT AND WALKING JOINT

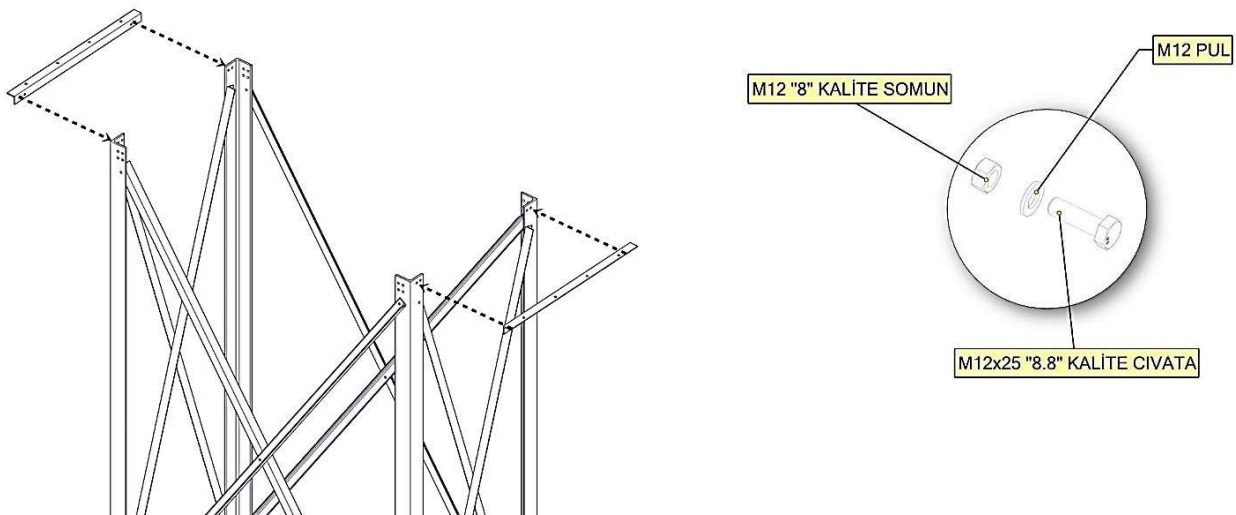
Şekil 2.2.1 Double Cross Ground Support



Tablo 2.2.1 Double Cross Ground Support Upper Parts

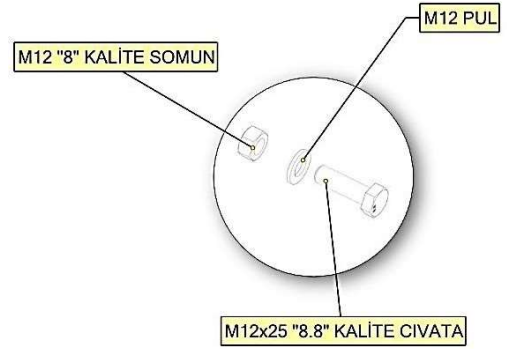
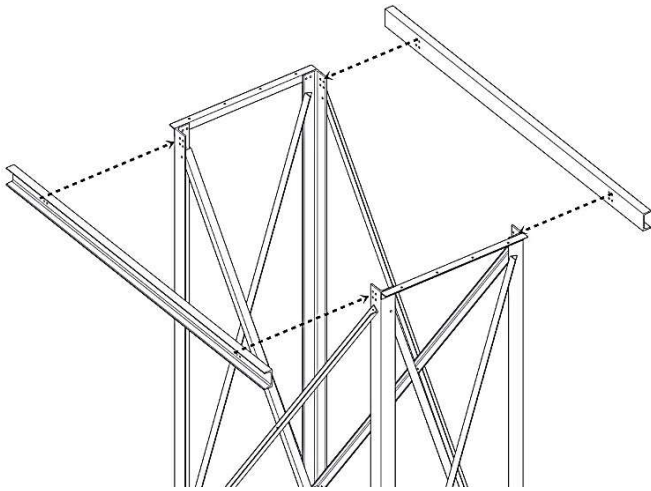
Pos Id	Part Description
1	Double Cross Inserts
2	Double Cross NPU Profile Connection
3	Double Cross IPE Profile Connection
4	Walkway Support Fitting

Şekil 2.2.2 Double Cross Inserts



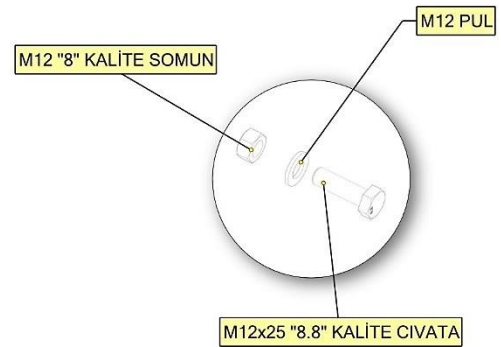
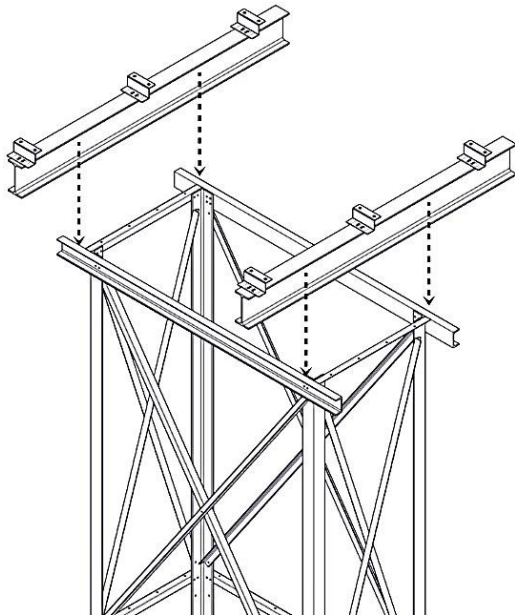
Şekil 2.2. Starting from 2, the upper region is assembled. The intermediate joints used in the lower sections are assembled as shown. The bolt types to be used are indicated in the figure. Observe the tightening torque.

Şekil 2.2.3 NPU Profile Connection

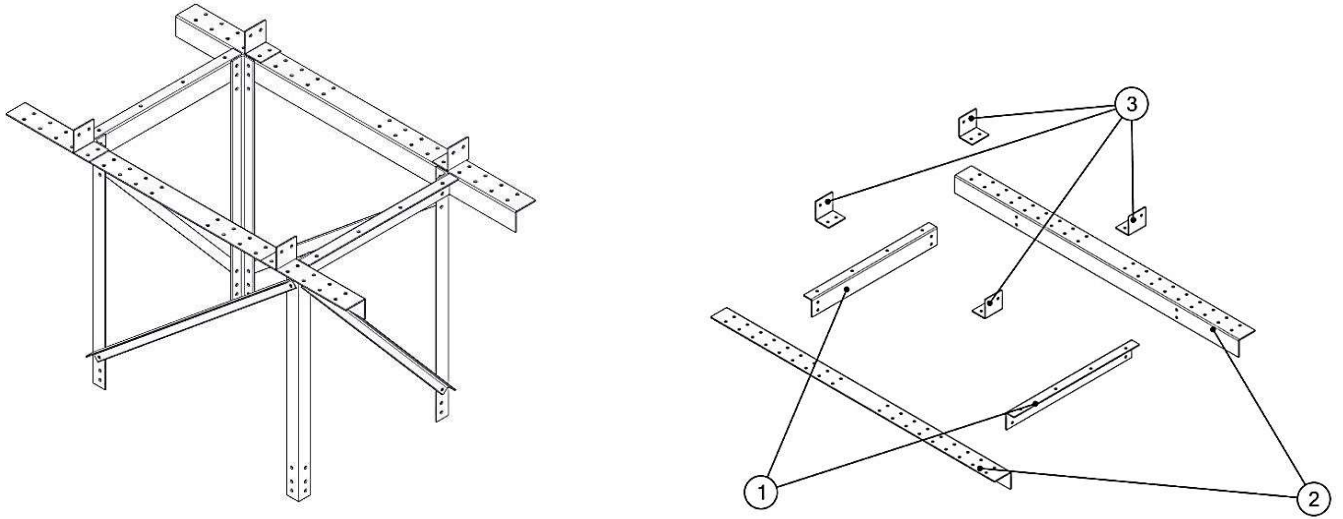


Then the NPU Profile connection is started. Assembly is done as shown in Figure 2.2.3. Finally, IPE profiles (See Figure 2.2.4). These IPE profiles are sent to the site without drilling. It must be drilled in the installation area. The connection points of the small fittings on these profiles must also be drilled in the field. Connection of all these parts (for Double Cross Ground Support) M12x40 "8.8" quality and M12 "8" quality nut will be used. Torque values are important.

Şekil 2.2.4 IPE Profile Connection



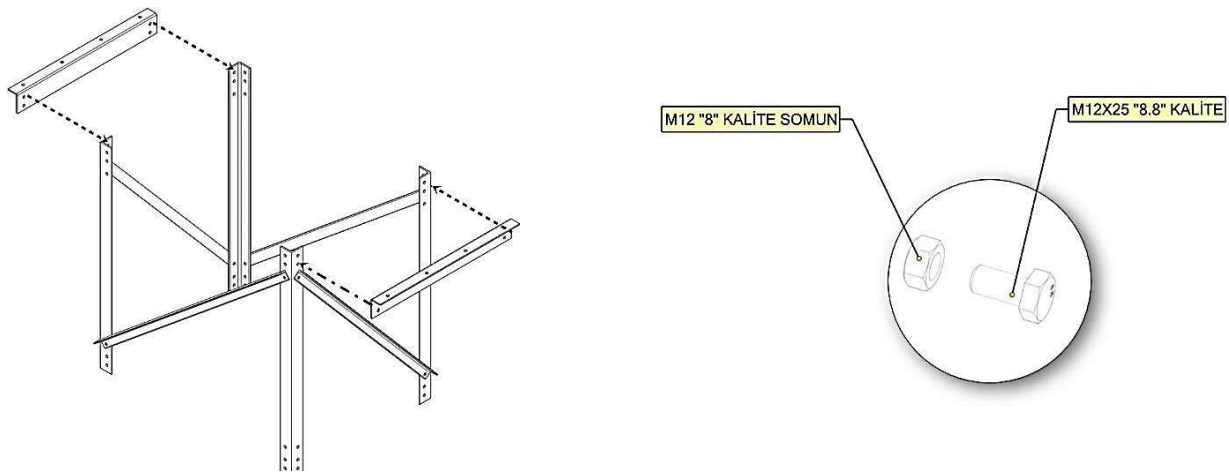
Şekil 2.2.5 Single Cross Ground Support Top



Tablo 2.2.2 Single Cross Ground Support Top Parts

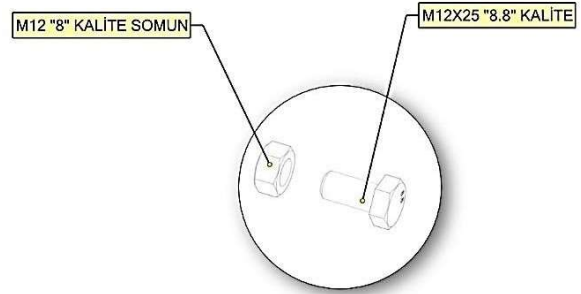
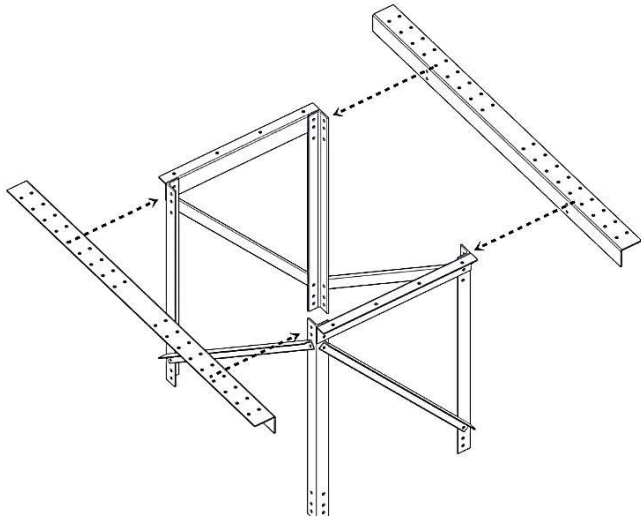
Pos Id	Part Description
1	Single Cross Inserts
2	Single Cross Top Connection Profile
3	Walkway Support Fitting

Şekil 2.2.6 Intermediate Fittings

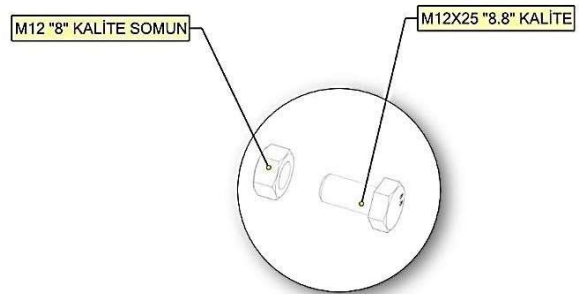
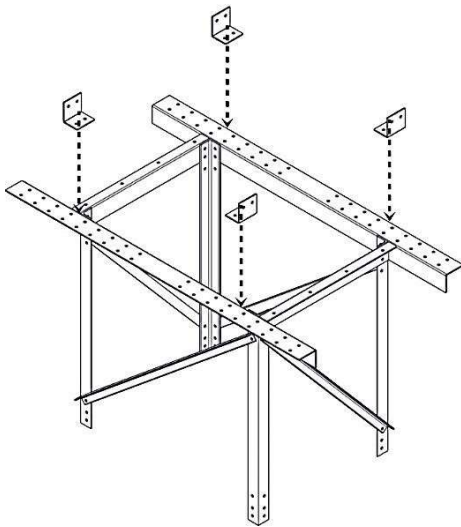


Şekil 2.2.6' Starting from the upper region. The intermediate joints used in the lower sections are assembled as shown. The bolt and nut type you need for installation is indicated in the picture above. The length of these parts varies according to the type of support from the ground.

Şekil 2.2.7 Top Link Profile

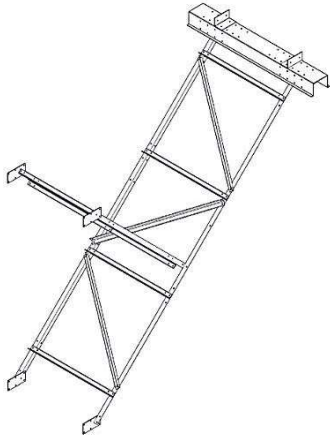


Şekil 2.2.8 Upper Fitting

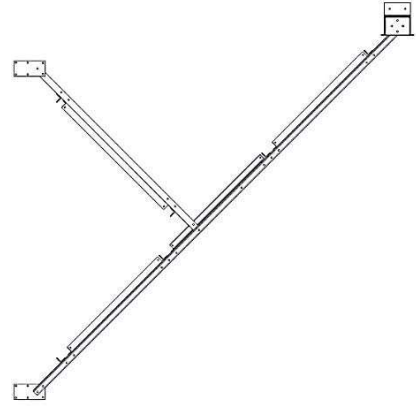


The upper connection profile is then assembled as shown in figure 2.2.7. Finally, the assembly of the upper connection parts is performed (see Figure 2.2.8). Connection of all these parts (for Single Cross Ground Support) M12x25 "8.8" quality and M12 "8" quality nut will be used. It is important to comply with the torque values.

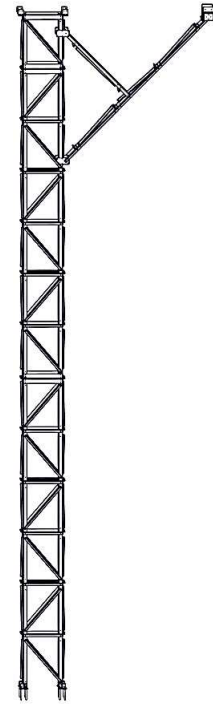
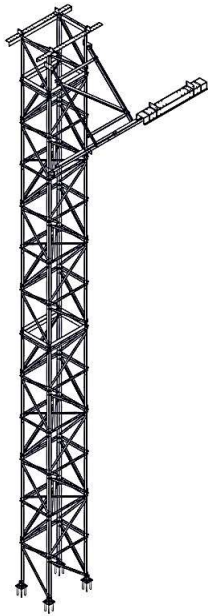
2.1 UNDER CONVEYOR SUPPORT



Şekil 2.3.1 Strut

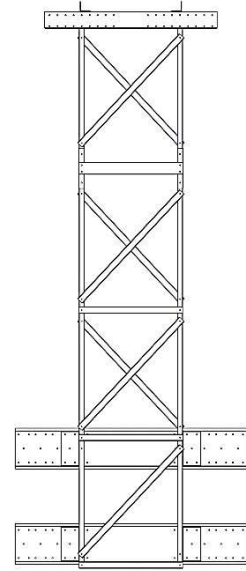
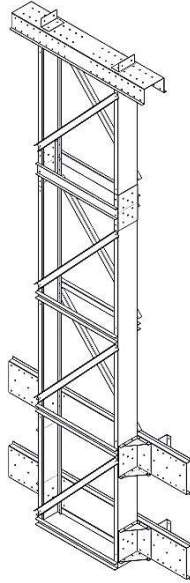


Şekil 2.3.2 Ground Support and Strut Joint



Outriggers allow the ground support with the walkway to be supported at longer distances and at more points. They are constructions. It is manufactured from high strength steel and painted and galvanized depending on the demand and the project. The ground support and the buttress must be flush with the walkway.

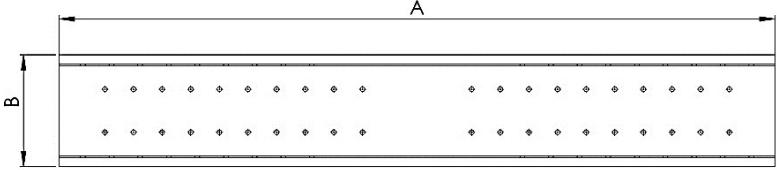
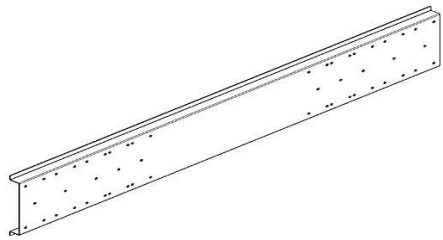
3. SUPPORT CARRIER FOOT FROM SILO



Silo support is produced with the aim of providing economical solutions for the installation of the facilities. These supports provide economic solution to the customer, but also provide advantages in transportation. Silo supports are fully galvanized steel It is produced. Conveyor, snow and wind loads are calculated optimally. Provides ease of installation since it is assembled with bolted system.

2.1 Silo Support Parts

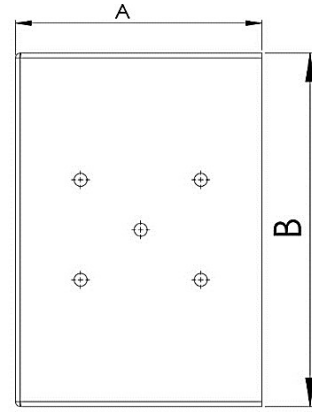
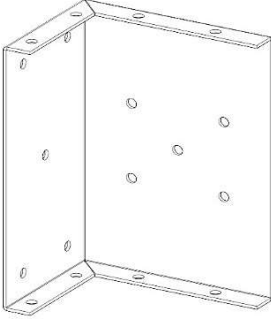
Şekil 3.1.1 Silo Support Beam Bonding Sheet



Tablo 3.1.1 Beam Bonding Sheet Dimensions

Walkway Measure	Size "A"	Size "B"
1050 mm	1716 mm	312 mm
1250 mm	2000 mm	312 mm
1600 mm	2300 mm	312 mm

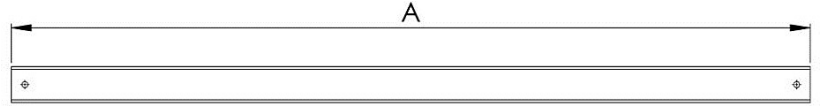
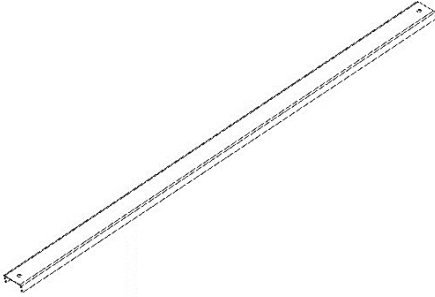
Şekil 3.1.2 Silo Support Beam Connection Sheet



Tablo 3.1.2 Silo Support Beam Connection Sheet Dimensions

Size "A"	Size "B"
246 mm	353 mm
296 mm	353 mm

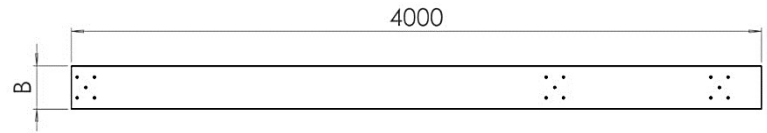
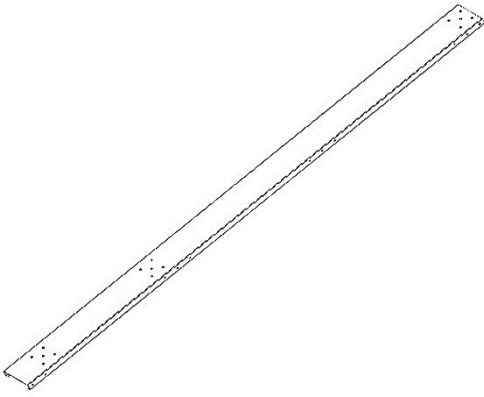
Şekil 3.1.3 Support Beam Cross from Silo



Tablo 3.1.3 Support Beam Cross Dimensions from Silo

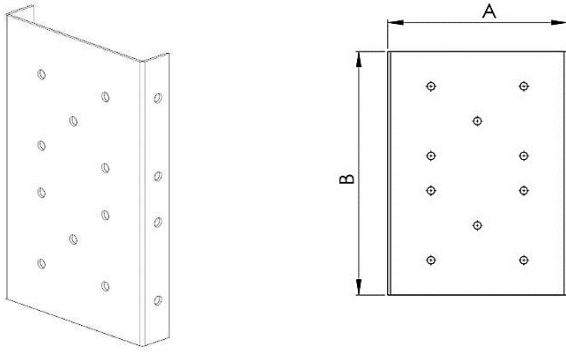
Yürüme Yolu Ölçüsü	Size "A"
1050 mm	1487 mm
1250 mm	1667 mm
1600 mm	1934 mm

Şekil 3.1.4 Silo Support Beam



Although the long edge is 4 meters as seen in the support beams from the silo, "B" dimension is 250 mm according to the support type from the silo.
or 300 mm.

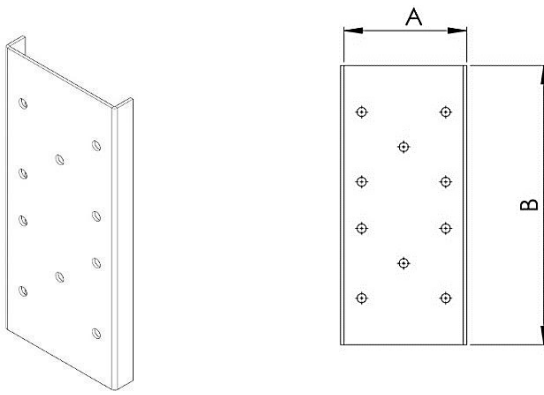
Şekil 3.1.5 Silo Support External Link



Tablo 3.1.3 Silo Support External Link

Kolon Ölçüsü	Size "A"	Size "B"
250 mm	259 mm	420 mm
300 mm	309 mm	420 mm

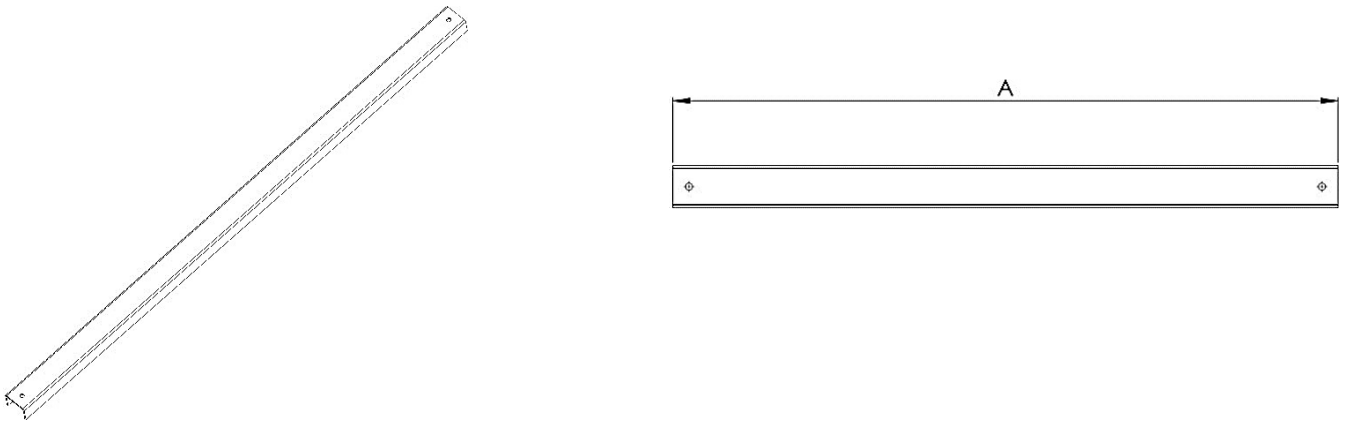
Şekil 3.1.6 Silo Support Column Internal Connection



Tablo 3.1.4 Silo Support Column Internal Connection

Kolon Ölçüsü	Size "A"	Size "B"
250 mm	180 mm	420 mm
300 mm	230 mm	420 mm

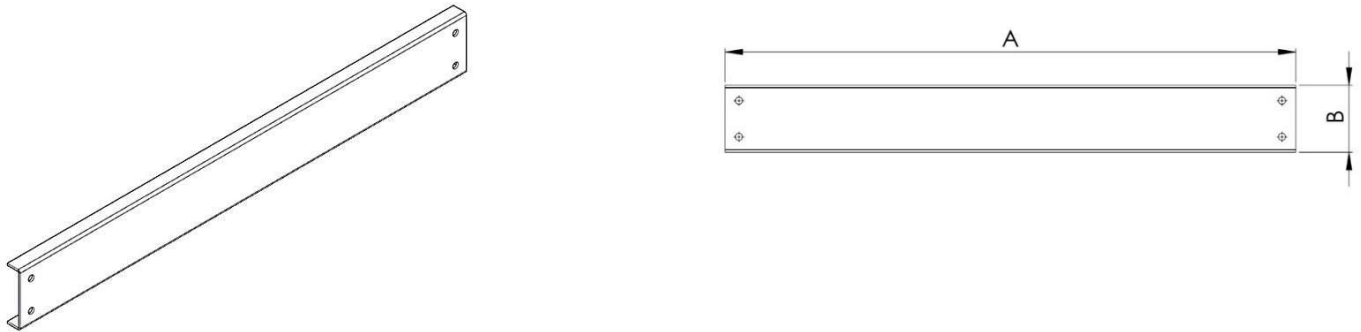
Şekil 3.1.7 Silo Support Beam Horizontal



Tablo 3.1.5 Support Beam Horizontal Dimensions from Silo

Silo Support Width	Size "A"
1050 mm	1030 mm
1250 mm	1278 mm
1600 mm	1614 mm

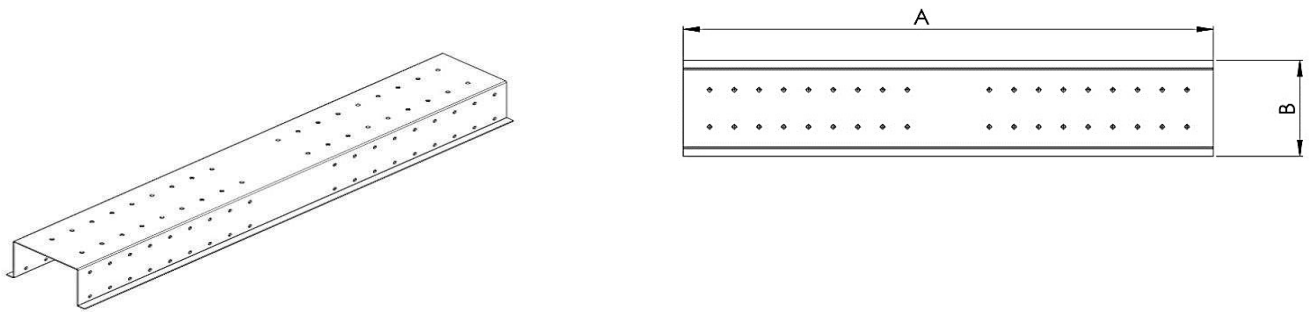
Şekil 3.1.8 Support Beam Joining Horizontal



Tablo 3.1.6 Horizontal Dimensions of Support Beam Joining from Silo

Silo Support Width	Size "A"	Size "B"
1050 mm	1030 mm	120 mm
1250 mm	1278 mm	120 mm
1600 mm	1614 mm	120 mm

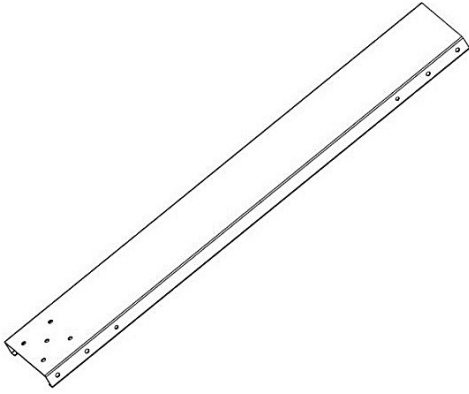
Şekil 3.1.9 Silo Support Walkway Support Part



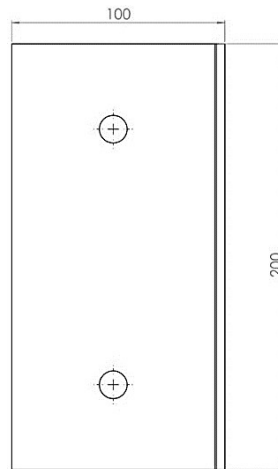
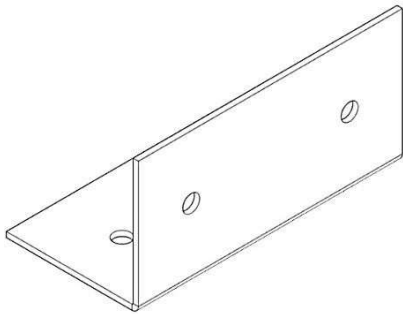
Tablo 3.1.7 Walkway Support Part Dimensions

Silo Support Width	Size "A"	Size "B"
1050 mm	1030 mm	120 mm
1250 mm	1278 mm	120 mm
1600 mm	1614 mm	120 mm

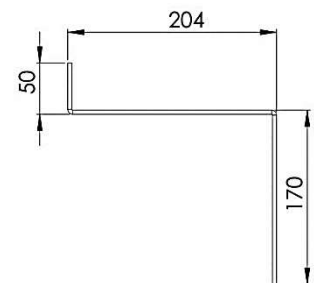
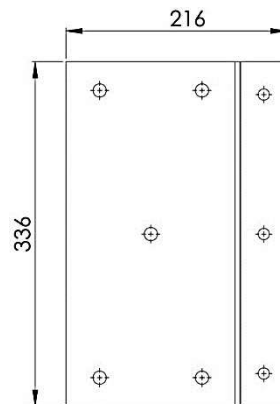
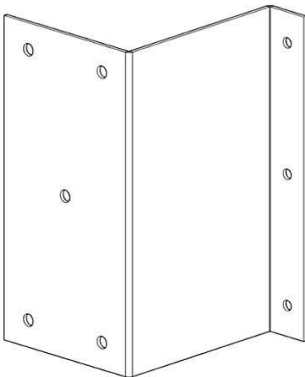
Şekil 3.1.10 Silo Support Additional Beam Short



Şekil 3.1.11 Silo Support Walkway Link Plate

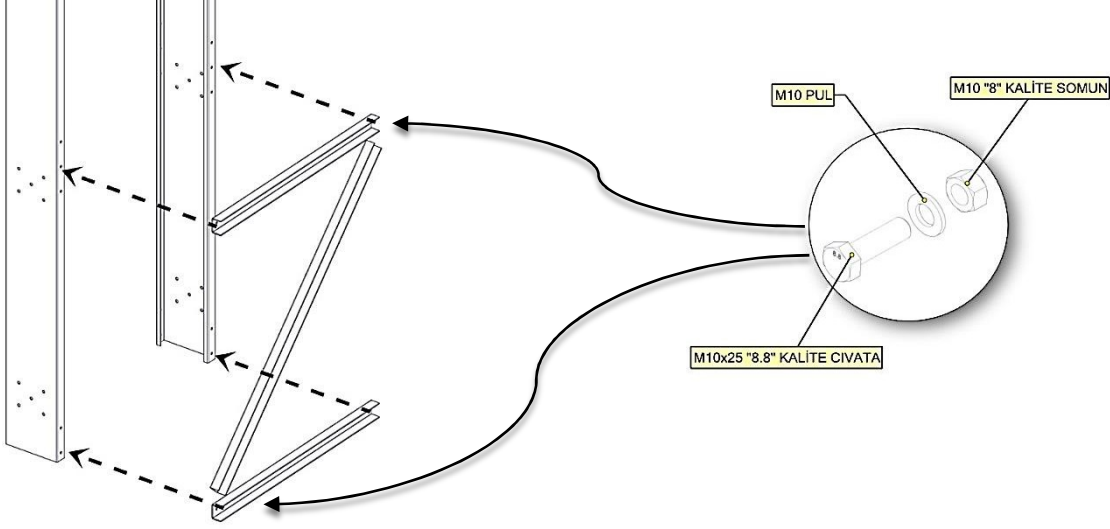


Şekil 3.1.12 Silo Support Post Connection



2.1 Support Installation from Silo

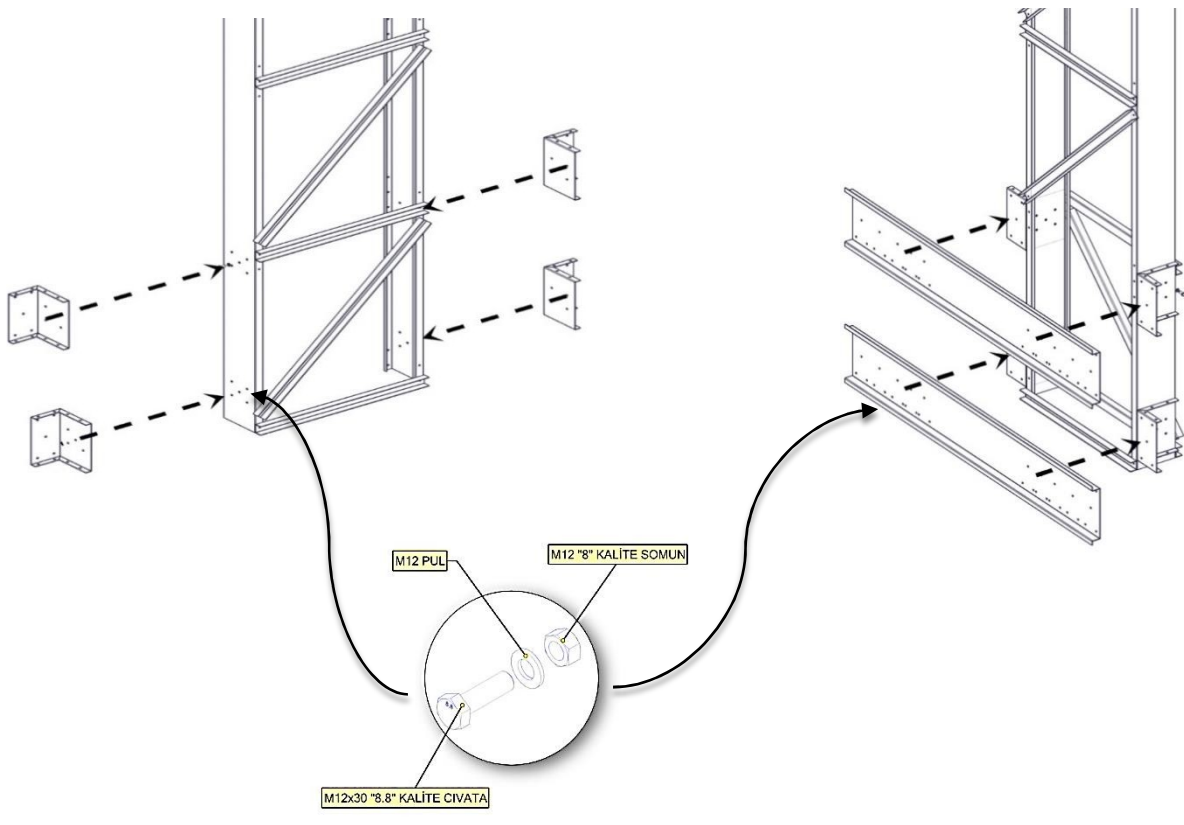
Şekil 3.2.1 Beam and Cross Connection



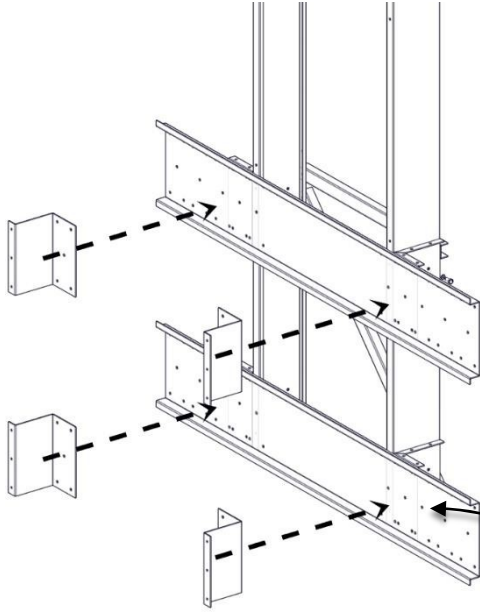
Start the support assembly from the silo with beam and cross connections. As shown in Figure 3.2.1, the process of bolting crosses and intermediate horizontal parts is performed. The same is done for the opposite side of the beam. For cross and intermediate horizontal parts, M10 x25 "8.8" quality bolt, M10 washer and M10 "8 Çap quality nut shall be used. Refer to the table given for torque values.

Şekil 3.2.2 Beam and Connection Sheet

Şekil 3.2.3 Beam Binding Sheet

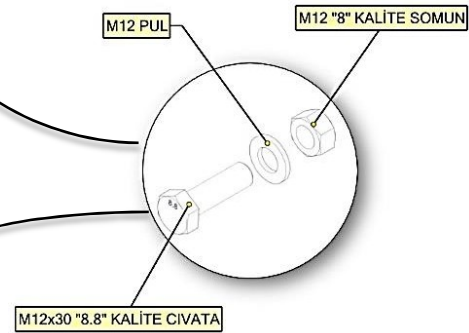
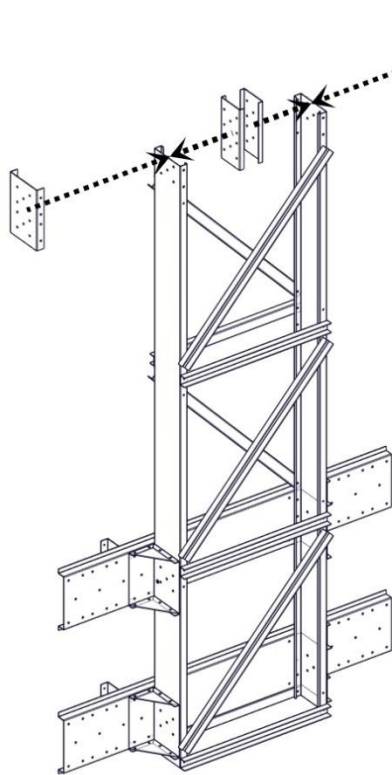


Şekil 3.2.4 Direct Connection



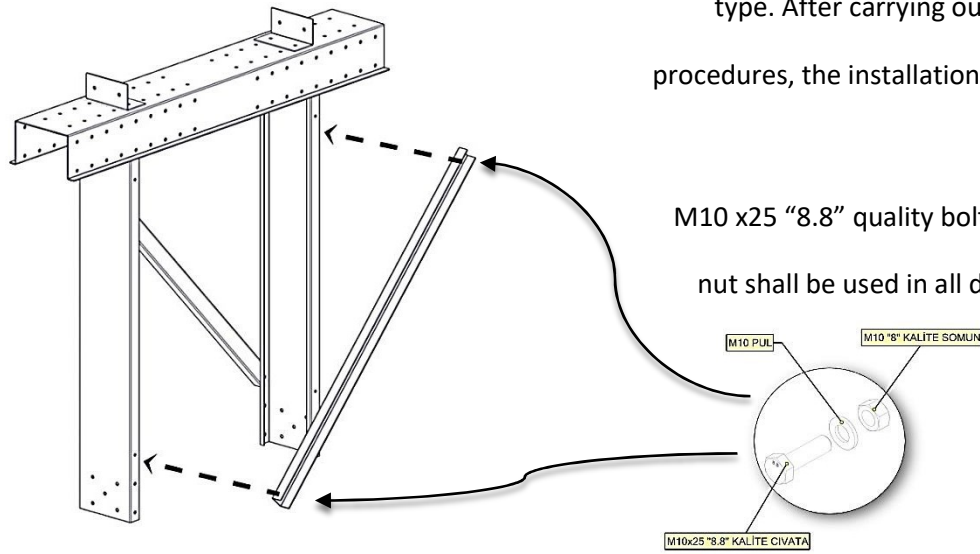
After installing the diagonals and spacers, install the beam connection sheet shown in Figure 3.2.2. Then install the joist fitting and the pole fitting in Figure 3.2.3 and Figure 3.2.4 respectively. M12 x30 "8.8" quality bolt, washer and M12 "8" quality nut should be used for mounting.

Şekil 3.2.5 Beam External and Internal Connections



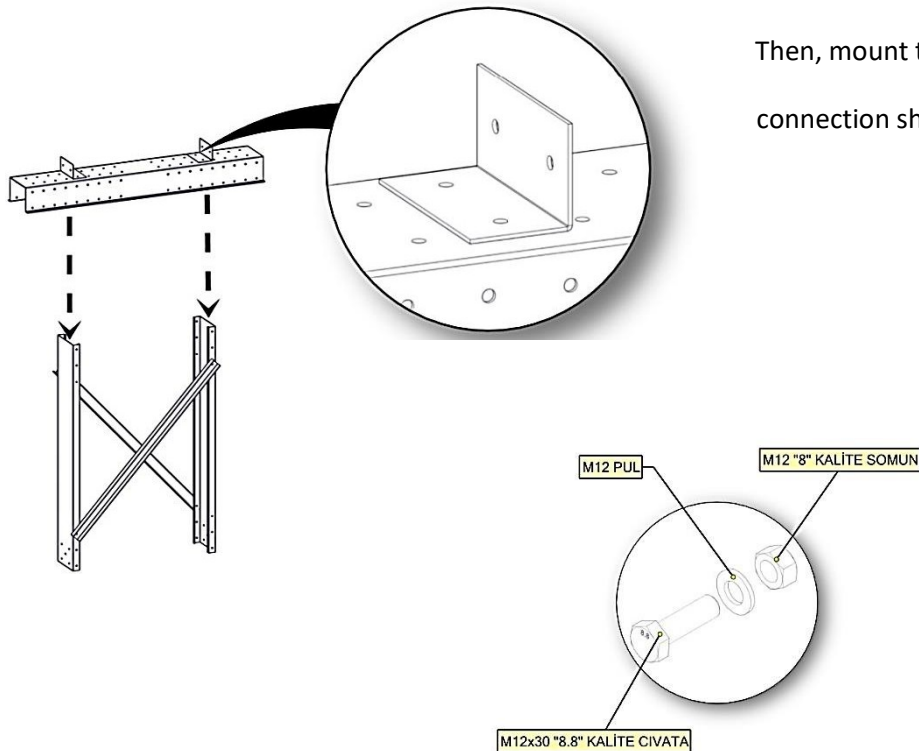
You can see the beams in Figure 3.2.5. The joist fittings are two parts, internal and external. M12 x30 "8.8" bolts, washers and M12 "8" nuts must be used for the assembly of these parts. Pay attention to the direction of the beam fittings complete installation.

Şekil 3.2.6 Silo Support Top



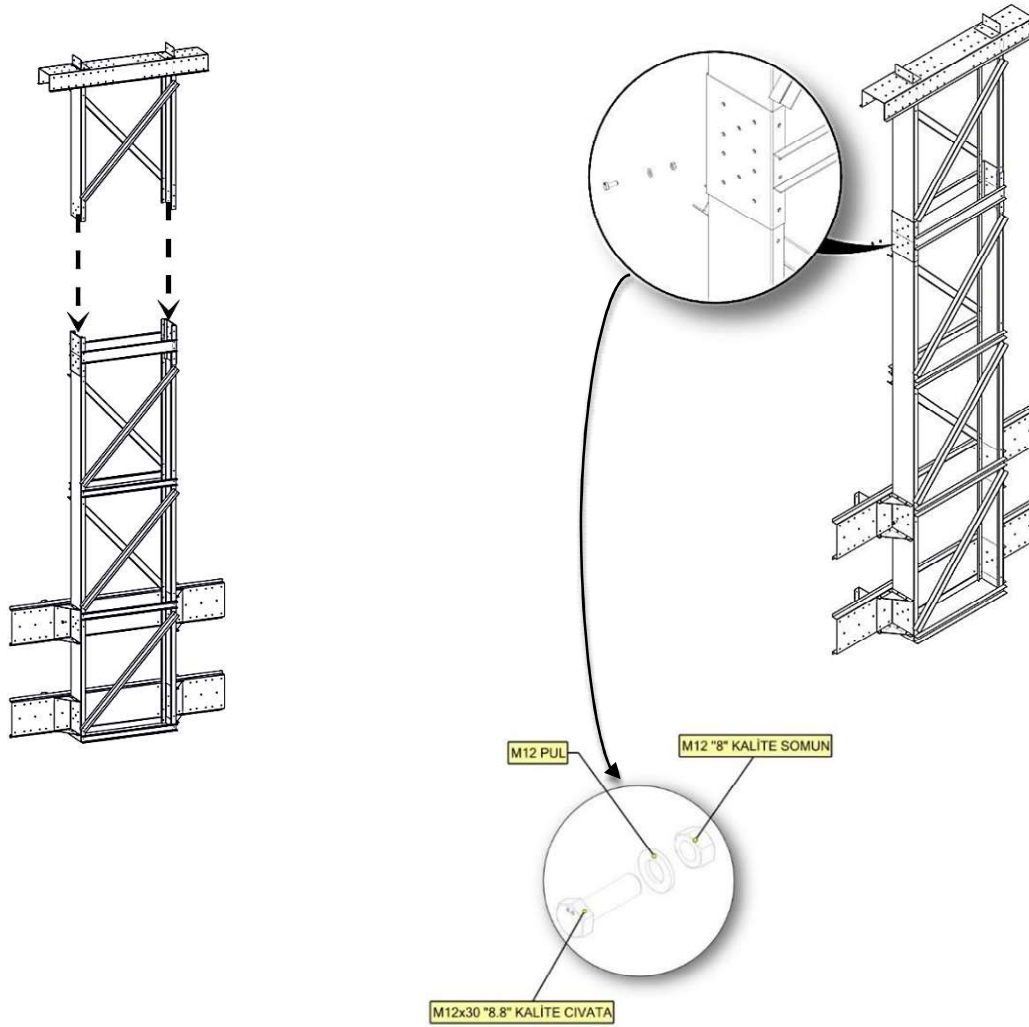
The length of the support from the silo varies according to the type. After carrying out the above-mentioned installation procedures, the installation of the remaining parts starts again from diagonals. from silo M10 x25 "8.8" quality bolt, M10 washer and M10 "8" quality nut shall be used in all diagonals of the support. See Figure 3.2.6.

Şekil 3.2.7 Silo Support Walkway Support Beam



Then, mount the walkway support. Install the walkway connection sheet in the detail picture. For connections M12 x30 "8.8" quality bolts, washers and M12 "8" quality nut should be used.

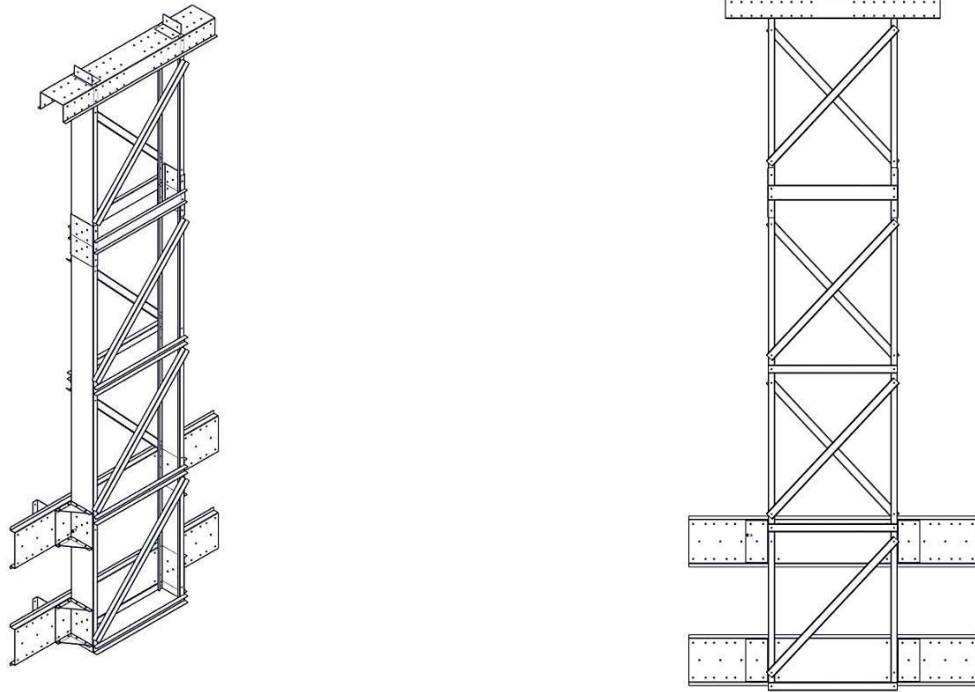
Şekil 3.2.8 Silo Support Combination



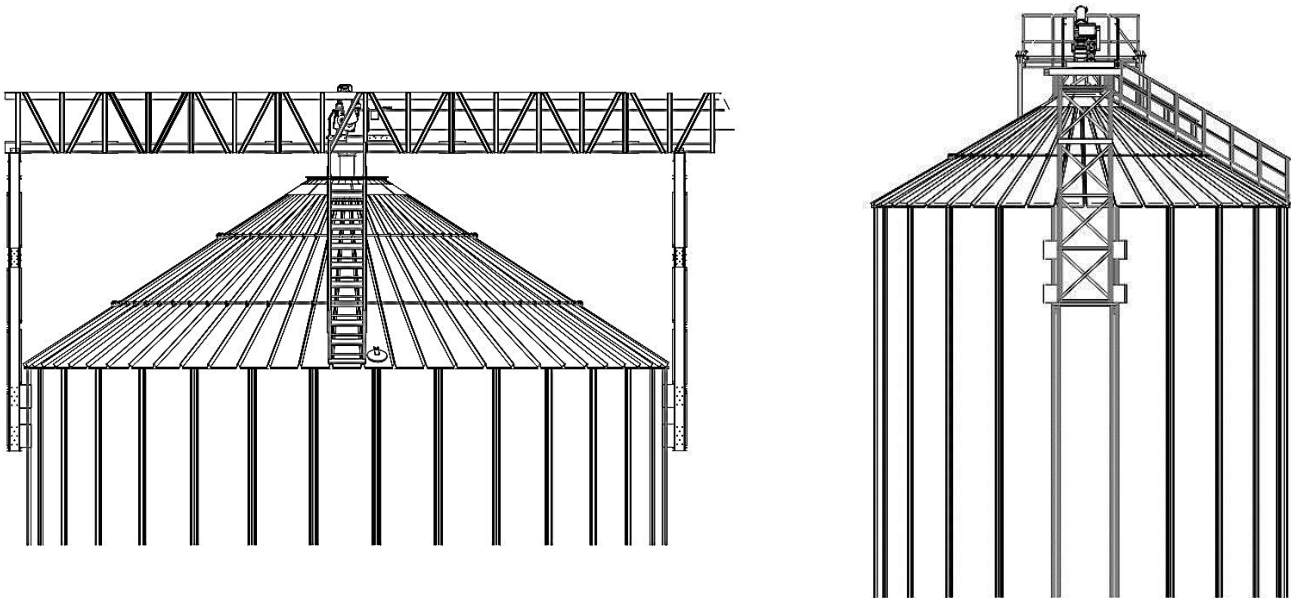
Depending on the length of the support from the silo, the finished modules are connected to each other by means of the bolt and nut shown in the figure and the insert. The joint is completed with M12x30 "8.8" quality bolt, M12 washer and M12 "8" quality nut. Then it is assembled to the silo with the help of crane. Fully tighten bolts and nuts before replacing the support from the silo.



Şekil 3.2.9 Silo Support Overview



Şekil 3.2.10 Silo Support General Assembly



The silo-to-silo mounting location is usually the second ring from the top. If a special project or customer's request in this direction if it is calculated in terms of static and specially designed. Take care when mounting the support from the silo to the lower junction of the walkway. Silo support provides easy installation thanks to its adjustable feature.



4 - WARRANTY

LAMBTON CONVEYOR; warrants every product it produces under normal conditions of use for 1 (one) year from the date of transportation to the purchaser of the products against defects in material or workmanship. The manufacturer's liability is limited to the repair or replacement of products resulting from defects in material or workmanship during this period. Labor costs arising from replacement or repair of the product shall be borne by the purchaser.

TERMS AND CONDITIONS

Installation and use of the product is not covered by the warranty if it is not done as specified in the manual supplied by the manufacturer. All storage and transport equipment available on site

If not provided by the manufacturer, LAMBTON CONVEYOR is not responsible for the products not supplied and is not included in the warranty terms. Due to the products not supplied

Our company can not be held responsible for the problems. Failure to do so may result from product negligence, replacement of parts, misuse, accident or improper / inadequate maintenance.

The responsibility of the errors that may arise from the installation error in the products whose installation does not belong to LAMBTON CONVEYOR does not belong to LAMBTON CONVEYOR.

The manufacturer may claim that no direct or purchaser may claim beyond the aforementioned; shall not be liable for indirect loss resulting from defects in materials or workmanship. Can change the product variety within the scope of R & D activities without informing LAMBTON CONVEYOR in advance.

This installation manual is for information purposes only. The right to make changes belongs to LAMBTON CONVEYOR.

