

# GRAIN SOLUTIONS

---

## PRODUCT CATALOGUE

DESIGNED FOR YOU, BUILT FOR YOU, SINCE 1965.

**LAMBTON**

## BUCKET ELEVATOR

Capacities up to 50,000 BPH (1,500 MTPH)

Lambton's advanced manufacturing process achieves premium quality with industry-leading delivery times.

## GRAIN CANNON

Capacities up to 20,000 BPH

(508 MTPH)

## SUPPORT STRUCTURES & CATWALKS

Lambton FEA design ensures safe, durable structures for any wind speed or ice requirement.

## GRAIN LOOPS

Capacities up to 10,000 BPH

(254 MTPH)



## CHAIN CONVEYOR - EN MASSE

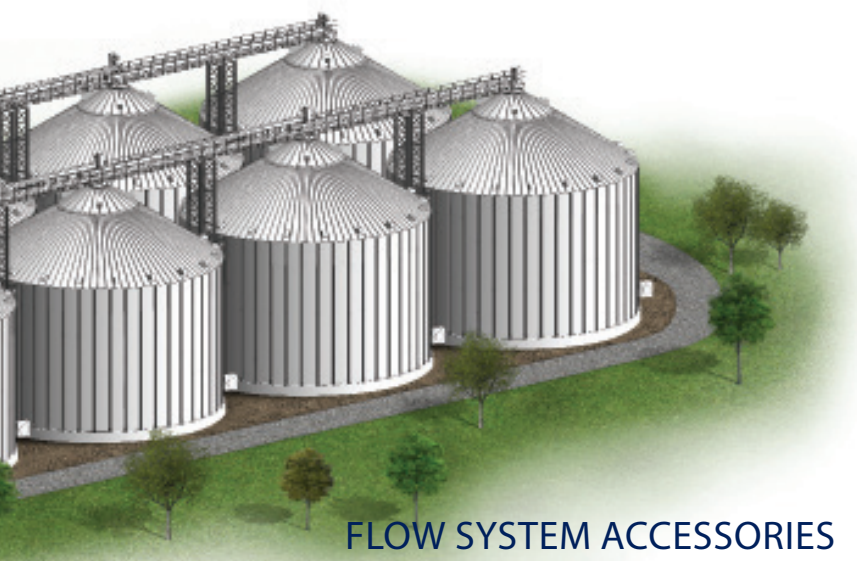
Capacities up to 30,000 BPH (762 MTPH)

Our 50 years of experience make Lambton the trusted source for quality, service and support.

## CHAIN CONVEYOR - PARTITION

Capacities up to 20,000 BPH (1016 MTPH)

Our 50 years of experience make Lambton the trusted source for quality, service and support.



## FLOW SYSTEM ACCESSORIES

Trust premium Lambton quality throughout your grain facility for consistent durability and reliability.

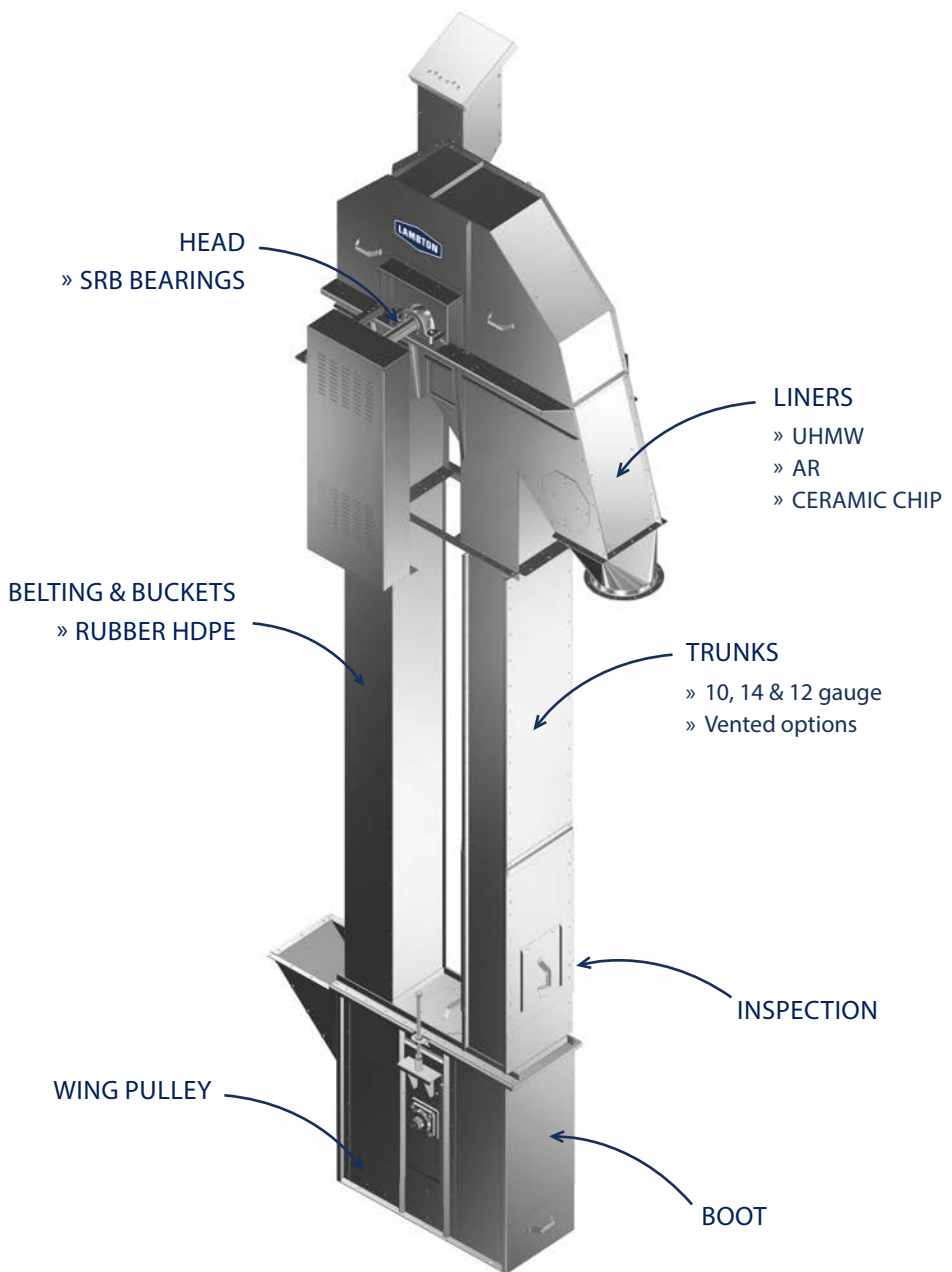
## GRAIN BINS

Capacities up to 110,000 BU

Lambton starts with the most durable materials to maximize the lifecycle of your grain storage investment.



# BUCKET ELEVATORS





## Head

Lambton offers Pillow Block Double Row Spherical Roller Bearings as standard for head shaft sizes 1-15/16" and larger. SAF or Adaptor Mount Bearings are optional and available upon request.

## Liners

We use standard UHMW liners as seen. Abrasion resistant steel and ceramic are available upon request. Adjustable bucket flapper is also provided.

## Buckets

We use durable, non sparking, polyethylene buckets. Standard Steel, Nylon or Urethane buckets are optional for rough and abrasive materials.

## Boot

Standard heavy-duty wing included with XT bushings, optional herringbone wing available upon request.

## Elevator Belting

In order to provide the best product to fit customer specifications, our Bucket Elevator comes with standard belting. Optional PVC belt is available upon request.

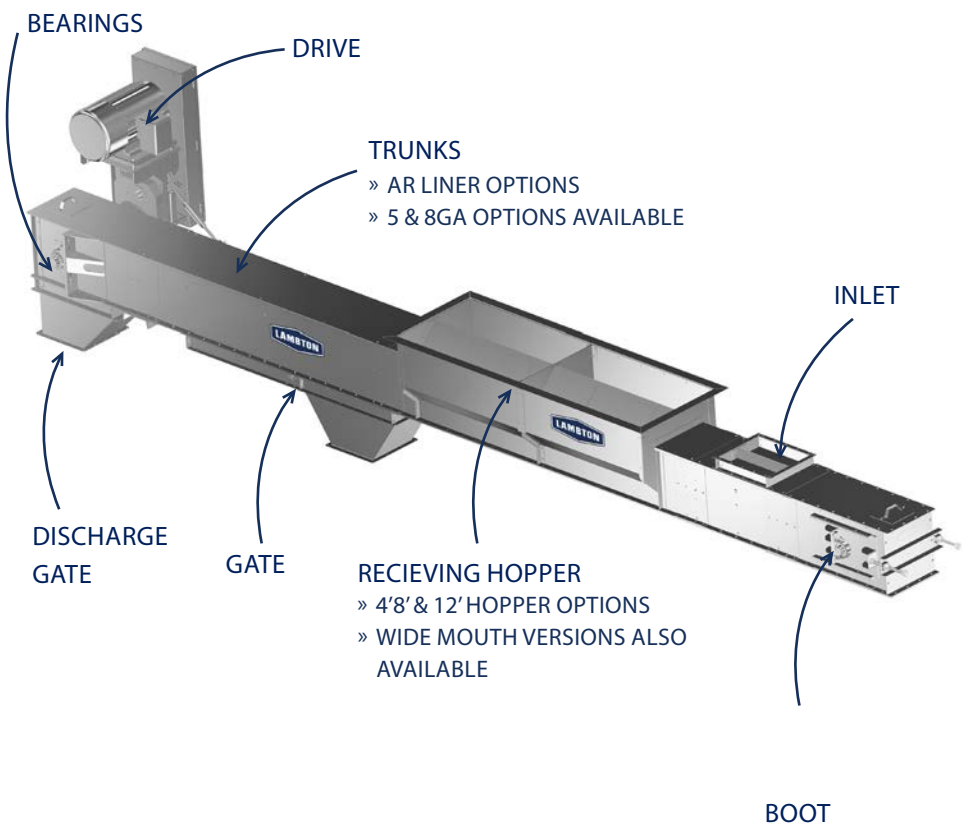
## Platforms

Lambton offers standard platform and ladder packages to allow easy access to your equipment with optional safety cage, rest platforms, work platforms and head platforms. Each platform includes full hand rail set as well as a large swing door in the floor for fall protection. Custom platforms are available upon request

Pully Dia.	RPM	Belt Speed	BPH
5"	122	160	120-240
	229	229	225-450
9"	150	353	900-1,050
16"	126	530	1,550-3,100
24"	64	402	2,400-3,800
	85	530	3,300-3,800
	83	521	5,000-5,600
30"	75	589	2,900-6,300
36"	66	622	5,900-9,700
42"	60	660	10,000-18,400
	64	700	22,000
42" Double Row	64	700	25,500-44,000



# EN-MASSE DRAG CONVEYORS



Capacities up to 30,000 BPH (1524 MTPH)

Lambton Conveyor level En-Masse drag conveyors have been designed to move material horizontally only. Slight inclines to a maximum of 3 degrees can be achieved depending on the cleanliness, and moisture of the product. In this case of inclines greater than 3 degrees, optional double paddles need to be used up to an angle of 8 degrees.

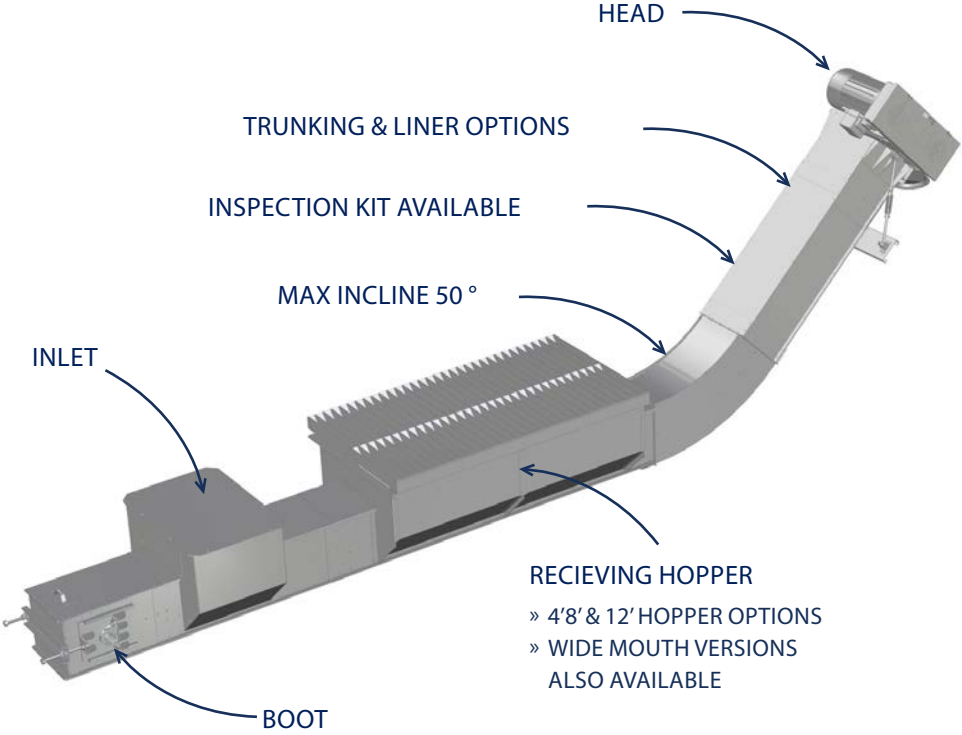
## Features

- Design facilitated by computer-aided modular bolt-together technology
- Constructed with galvanized steel in 10-8-5 gauge standard
- Equipped with robust pillow block bearings for heavy-duty applications
- Features a durable drive sprocket designed for demanding tasks
- Includes a detachable inspection cover for easy maintenance
- Incorporates dust seals to protect against debris and contaminants

FLAT BOTTOM EN-MASSE DRAGS				ROUND BOTTOM EN-MASSE DRAGS			
BPH	RPM	FPM	MODEL NO	BPH	RPM	FPM	MODEL NO
1,000	38	64	GLD-09x9	1,000	38	64	GLD-09x9
1,500	56	95	GLD-09x9	1,500	56	95	GLD-09x9
2,000	74	128	GLD-09x9	2,000	74	128	GLD-09x9
2,500	92	160	GLD-09x9	2,500	92	160	GLD-09x9
3,000	110	189	GLD-09x9	3,000	110	189	GLD-09x9
3,000	32	95	GLD09x17	3,000	32	95	GLD09x17
4,000	42	126	GLD09x17	4,000	42	126	GLD09x17
5,000	52	158	GLD09x17	5,000	52	158	GLD09x17
6,000	62	189	GLD09x17	6,000	62	189	GLD09x17
6,000	46	142	GLD-12x17	6,000	46	142	GLD-12x17
7,000	54	165	GLD-12x17	7,000	54	165	GLD-12x17
8,000	62	189	GLD-12x17	8,000	62	189	GLD-12x17
8,000	46	145	GLD-16x17	8,000	46	145	GLD-16x17
9,000	52	160	GLD-16x17	9,000	52	160	GLD-16x17
10,000	58	177	GLD-16x17	10,000	58	177	GLD-16x17
10,000	46	160	GLD-16x20	LOW ROFILE EN-MASSE DRAGS			
12,000	56	185	GLD-16x20				
13,000	48	160	GLD-20x20	3000	49	113	GLD-13x11
15,000	54	184	GLD-20x20	4000	65	150	GLD-13x11
16,000	36	138	GLD-24x24	5000	81	187	GLD-13x11
20,000	44	170	GLD-24x24	5500	70	154	GLD-16x11
23,000	38	146	GLD-32x24	6000	76	176	GLD-16x11
26,000	42	165	GLD-32x24	6500	81	182	GLD-16x11
30,000	50	192	GLD-32x24	7000	88	196	GLD-16x11



# PARTITION INCLINE DRAG CONVEYORS



Capacities up to 20,000 BPH (1016 MTPH)



## Features

- Design facilitated by computer-aided modular bolt-together technology
- Manufactured using CNC machining processes
- Constructed with galvanized steel in 10-8-5 gauge standard
- Equipped with robust pillow block bearings for heavy-duty applications
- Features a durable drive sprocket designed for demanding tasks
- Includes a detachable inspection cover for easy maintenance
- Incorporates dust seals to protect against debris and contaminants

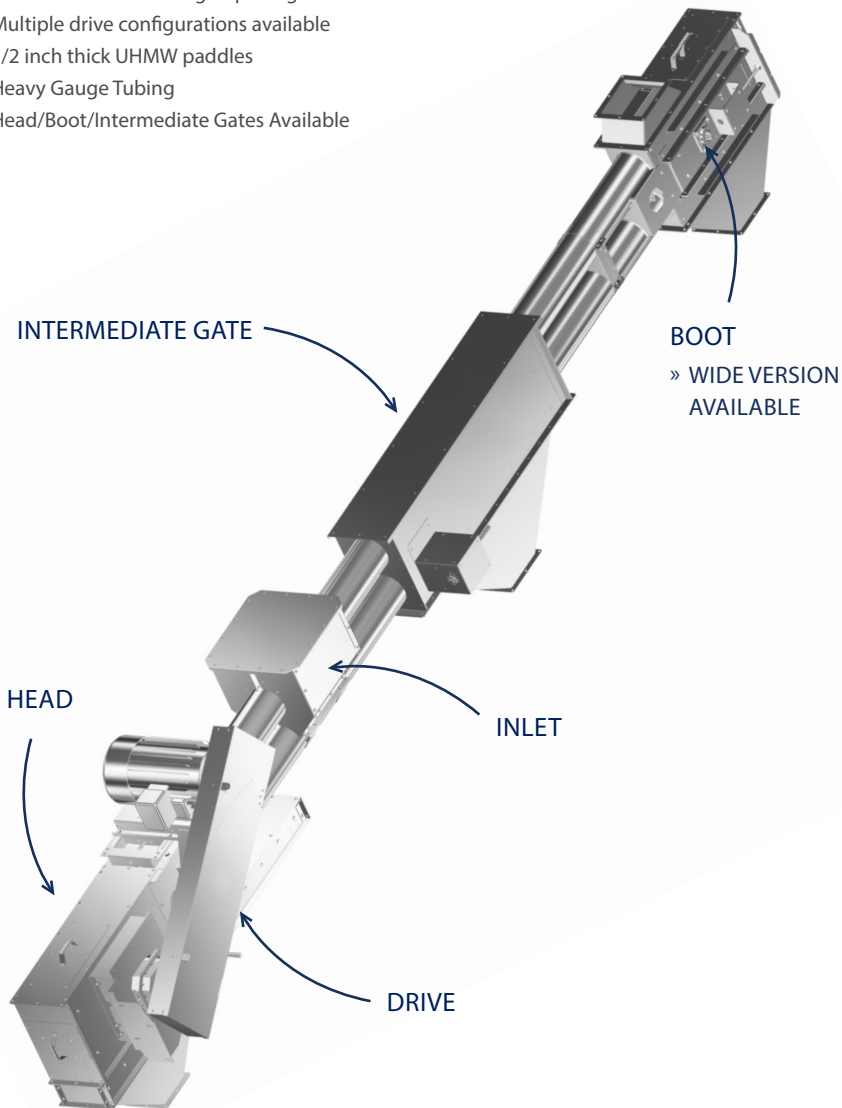
FLAT BOTTOM PARTITION DRAGS				ROUND BOTTOM PARTITION DRAGS			
BPH	RPM	FPM	MODEL NO	BPH	RPM	FPM	MODEL NO
1,000	30	66	GLID-09x14	3,500	88	194	GLIR-09x14
1,500	46	102	GLID-09x14	3,400	55	122	GLIR-12x14
2,100	64	141	GLID-09x14	3,800	61	135	GLIR-12x14
2,500	76	168	GLID-09x14	4,400	70	155	GLIR-12x14
3,000	70	155	GLID-12x14	4,700	76	168	GLIR-12x14
3,400	76	168	GLID-12x14	5,600	90	199	GLIR-12x14
3,900	88	194	GLID-12x14	5,000	34	104	GLIR-17x14
3,900	68	150	GLID-17x14	6,400	43	132	GLIR-17x14
5,000	88	194	GLID-17x14	7,000	48	147	GLIR-17x14
4,000	28	98	GLID-17x20	8,000	54	166	GLIR-17x14
5,000	36	126	GLID-17x20	7,000	35	123	GLIR-17x20
6,000	42	147	GLID-17x20	8,400	40	140	GLIR-17x20
7,000	50	175	GLID-17x20	9,400	45	158	GLIR-17x20
7,000	42	147	GLID-20x20	10,500	50	175	GLIR-17x20
7,500	46	161	GLID-20x20				
8,000	48	168	GLID-20x20				
8,500	52	182	GLID-20x20				
7,000	26	108	GLID-24x24				
8,000	30	124	GLID-24x24				
9,000	32	133	GLID-24x24				
10,000	36	149	GLID-24x24				
10,000	28	116	GLID-32x24				
12,500	34	141	GLID-32x24				
15,000	40	166	GLID-32x24				



# GRAIN CANNONS

Capacities up to 20,000 BPH (508 MTPH)

- Gently convey material horizontally or at angles up to 60 Degrees
- Galvanized steel\*, bolted construction
- Boot inlet + Flow through opening
- Multiple drive configurations available
- 1/2 inch thick UHMW paddles
- Heavy Gauge Tubing
- Head/Boot/Intermediate Gates Available

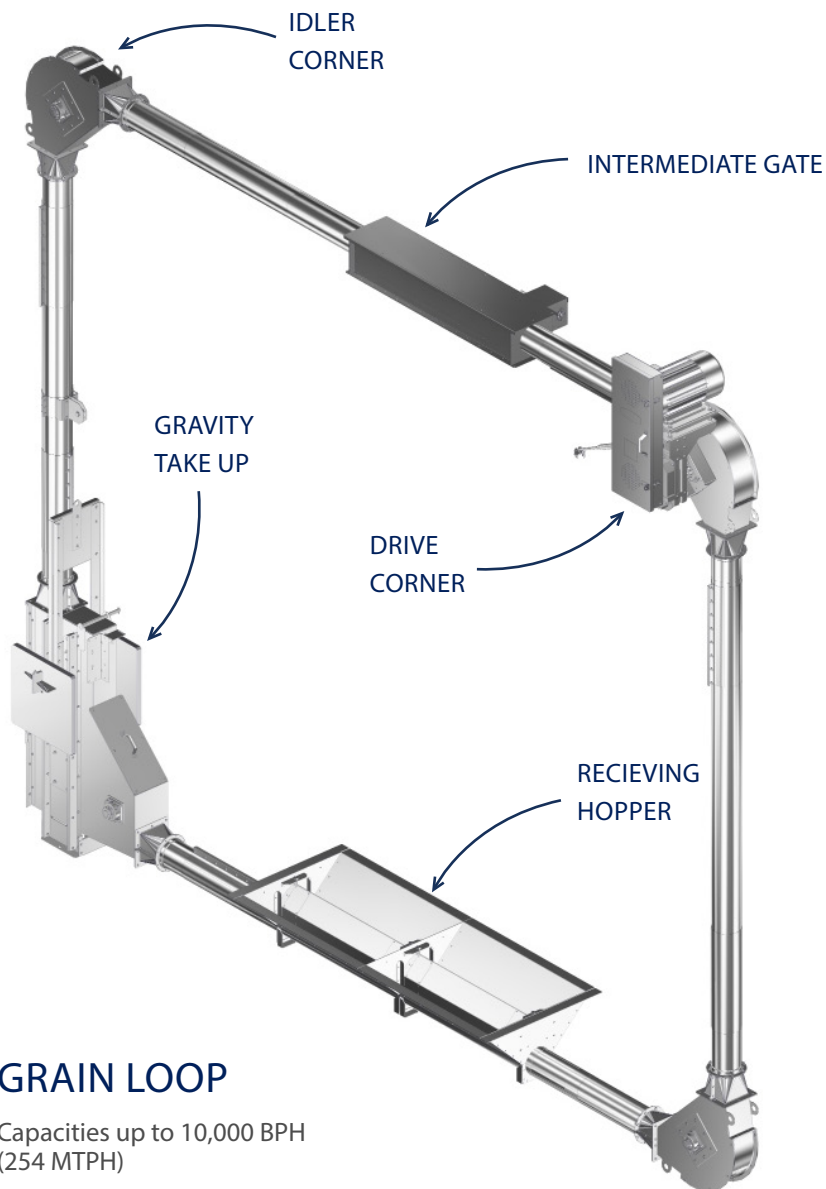


## Features

- **Powerful Grain Discharge:** The grain cannon is equipped with a high-powered discharge system, capable of projecting.
- **Configurable Angle and Direction:** The cannon offers flexible configurable options for both the angle and direction of grain discharge. This allows for precise targeting and distribution, ensuring optimal coverage on the desired area.
- **Durable Construction:** Built to withstand demanding agricultural environments, the grain cannon is constructed with high-quality materials, ensuring durability and longevity. It can handle the rigors of continuous use and adverse weather conditions.
- **Efficient Grain Management:** The grain cannon offers efficient grain management capabilities, allowing for controlled and precise distribution. This helps minimize waste, optimize storage capacity, and improve overall grain handling processes.
- **Versatile Applications:** The grain cannon can be used in various grain-related applications, such as loading trucks, filling grain bins, or distributing grains for livestock feed. Its versatility makes it a valuable asset for farmers, grain processors, and storage facilities.

Tube size	6" (152mm)	8" (203mm)	10" (254mm)	12" (305mm)	14" (356mm)	Double 12" (305mm)	
Maximum Capacity	1,500 BPH	4,000 BPH	6,000 BPH	10,000 BPH	13,000 BPH	15,000 BPH	20,000 BPH
	(40 MTPH)	(100 MTPH)	(150 MTPH)	(250 MTPH)	(325 MTPH)	(375 MTPH)	(500 MTPH)
Chain travel speed	328 FPM	333 FPM	358 FPM	403 FPM	385 FPM	303 FPM	403 FPM
Head shaft RPM	124	117	117	109	84	82	109
Tube gauge	12 GA	10 GA	10 GA	10 GA	3/16"	10 GA	
	(2.6 mm)	(3.43 mm)	(3.43 mm)	(3.43 mm)	(3.43 mm)	(4.75 mm)	
UHMW paddle thickness	1/2"	1/2"	1/2"	1/2"	1/2"	3/4"	
	(12.7 mm)	(12.7 mm)	(12.7 mm)	(12.7 mm)	(12.7 mm)	(19 mm)	
Conveyor chain	81X	81XHH	81XHH	81XHH	81XHH/WH124		81XHH
Angle of Operation	Horsepower required per foot of conveyor						
	Kilowatt power required per meter of conveyor						
	0.042	0.076	0.114	0.18	1.05	1.17	1.5
	0.103	0.185	0.278	0.439	0.783	0.872	1.119
	0.062	0.113	0.17	0.268	1.29	1.44	1.77
	0.151	0.275	0.414	0.654	0.962	1.074	1.320
	0.085	0.167	0.25	0.397	1.49	1.66	2.03
	0.207	0.407	0.61	0.968	1.111	1.238	1.514
	0.12	0.222	0.333	0.524	1.64	1.82	2.22
45 deg.	0.292	0.541	0.812	1.278	1.223	1.357	1.655
	0.14	0.27	0.405	0.629	1.73	1.92	2.34
60 deg.	0.341	0.658	0.988	1.534	1.290	1.432	1.745
	Empty weight /FT (LBS)	24	39	47	54	70	108
Full weight /FT (LBS)**	33	55	72	89	116	161	178
Empty weight /m (KG)	16	26	32	36	47	72	72
Full weight /m (KG)**	22	37	48	60	78	108	120

# GRAIN LOOPS



## GRAIN LOOP

Capacities up to 10,000 BPH  
(254 MTPH)

- Receiving, conveying, bin unloading and load-out in one cost-effective system
- Galvanized steel\*, bolted construction

## Features

- **Robust Construction:** The grain loop is built with sturdy materials to withstand heavy-duty usage in grain handling operations. Its durable construction ensures long-lasting performance even in demanding environments.
- **Continuous Loop Design:** The loop operates on a continuous loop system, allowing for efficient and seamless grain transportation. This eliminates the need for manual intervention and ensures a smooth flow of grains throughout the system.
- **Dust Containment System:** To maintain a clean working environment, the grain loop may include a dust containment system. This helps capture and control dust particles generated during grain handling, promoting air quality and reducing the risk of contamination.
- **Compatibility with Accessories:** The grain loop is compatible with various accessories and attachments, such as spouts, Bin inlets, chutes, or diverters. This versatility allows for seamless integration into existing grain handling systems or customization based on specific operational requirements.
- **Expandable and Modular Design:** The grain loop is often expandable and modular, enabling future scalability as grain handling needs evolve. Additional sections or components can be easily integrated into the system, providing flexibility for growth and increased capacity.

Tube Size	6"	8"	10"	12"
Max Capacity (BPH)	1500	4000	6000	10000
Chain Travel Speed (FPM)	318	318	336	388
Head Shaft RPM	81	81	81	81
Tube Gauge	12 GA	10 GA	10 GA	10 GA
UHMW Paddle Thickness	1/2"	1/2"	1/2"	1/2"
Conveyor Chain	81X	81XHH	81XHH	81XHH
Max HP (kW)	30 (22)	60 (44)	100 (74)	120 (90)
Angle of Operation	HP required per foot			
	kW required per foot			
Horizontal	0.042	0.076	0.144	0.178
	0.103	0.186	0.279	0.435
Vertical	0.2	0.35	0.5	0.75
	0.489	0.856	1.223	1.835
Empty Weight/ft (lbs)	12	19	23	27
Full Weight/ft (lbs)	21	35	48	62
Empty Weight/m (kg)	18	28	34	40
Full Weight/m (kg)	31	52	71	93



# DISTRIBUTORS

## FLAT BACK DISTRIBUTOR

### LINER OPTION

- » UHMW
- » AR
- » CERAMIC CHIP



## DUAL INLET PENDULUM DISTRIBUTOR

### LINER OPTIONS

- » STANDARD URETHANE
- » UHMW
- » AR
- » CERAMIC CHIP



## Features

- Galvanized weather tight enclosure
- Large hinged inspection door from top to bottom
- Heavy-duty long lasting construction
- Positive position locking
- Schedule 40 pipe for inner spout thick walled pipe for longevity.
- Inner spout brush ensures product control
- Cable or electric actuated
- Easy turning (with UHMW guide)
- Round flange inlet & outlets
- Short throat for limited loss of discharge height

### ROUND SPOUTING CAPACITY APPROXIMATIONS

SIZE	in <sup>2</sup>	BPH
6"	28.3	1,960
8"	50.3	3,500
10"	78.5	5,460
12"	113.1	7,910
14"	154.0	10,780
16"	201.1	14,000
18"	254.5	17,780
20"	314.2	21,980
24"	452.3	31,500

## Features

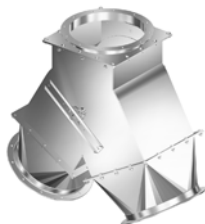
- Large inspection door at each end
- Heavy duty long lasting construction
- Positive position locking
- Cable or electric actuated
- Easy turning (with sprocket & UHMW guide)
- Round flange inlet & outlets
- Short throat for limited loss of discharge height
- Standard abrasion-resistant steel liners in pendulum spouts
- Standard urethane liners in all pendulum discharge transitions
- Hinged after large



# FLOW SYSTEM ACCESSORIES



Cushion Boxes



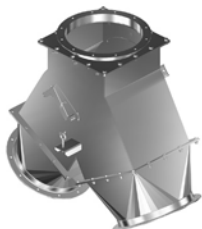
2 Way Offset Pan Valve



Inline Steam Vent



2 Way Y Flipper Valve



2 Way X Flipper Valve



3 Way Flipper Valve

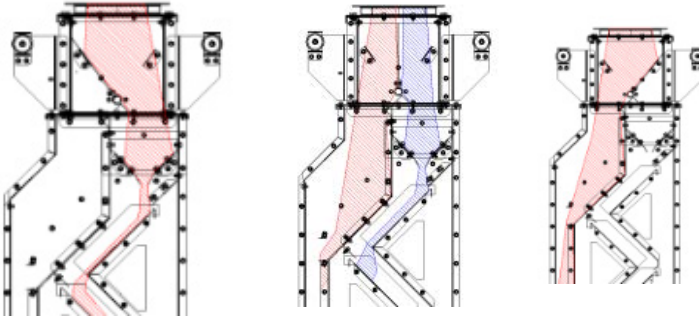


Inline Flow Reducer



3 Way Pendulum Valve





- Full or partial by-pass capability.
- Separate flow path for screenings.
- No power requirements.
- Easy to install and maintain.
- Bolted, Galvanized construction.
- Easy access door for cleaning and screen replacement.
- Reduce costly dockages for foreign material.
- Reduce drying time and increase storage capacity.
- No power requirements.
- Screen cleaner to remove finds in cleaner



Lambton FEA design ensures safe, durable structures for any wind speed or ice requirement.

- Designed in accordance with the AISC Manual of Steel Construction using the latest infinite element analysis software by RISA Technologies
- Constructed of ASTM A-529 Grade 50 mill certified structural steel angle
- ASTM A-325 galvanized bolts, nuts, and locking devices used for all structural connections
- Structural Steel is hot dipped galvanized in accordance with ASTM A-123 and ASTM A-153 standards



**Walkthru Bridge  
Truss Catwalk**



**Under Bridge Catwalk**



**Cantilever Catwalks**  
No Roof Loads



- In-Bin Grain Drying System blends proven drying technology with innovative Lambton features for optimum drying performance and uniformity
- Available with bins sizes 21', 24', 30' or 36' and up to 11 tiers (rings) tall
- It can handle most types of grains with potential grain drying capacity over 1,000 bushels per hour
- It comes in all galvanized steel construction for low- maintenance and durability
- Wet grain is loaded into the ultra dry overhead drying chamber. The drying unit forces moisture from grain up and out of the bin through the Roof Vent System
- Grain is released to storage/ cooling area after drying to a pre-determined moisture level. Drying chamber is then refilled with wet grain
- The cooling fan operates continuously to cool the dried grain Lambton's Ultra Dry System recycles the heat from the cooling grain, thus improving dryer efficiency



# GRAIN BINS

## ROOF ASSEMBLY

A 32.5° standard roof angle is available for both structured and non-structured versions, with peak load capacities ranging from 4K to 12K. All Lambton roofs include standard fall arrest anchor points.

## ROOF LADDERS AND STAIRS

Lambton provides standard roof ladders, with optional ladder handrails and stair packages available.

## PLATFORMS

Various platform types are available for rest, side draw and at-eave locations.

## STRESS-TESTED DESIGN

Lambton's technology optimizes bin construction by calculating wind stresses, roof-mounted equipment loads, and even snow loads, both evenly distributed and unbalanced. We offer upgrade options tailored to your location and needs.

## LADDER AND CURVED BIN STAIRS

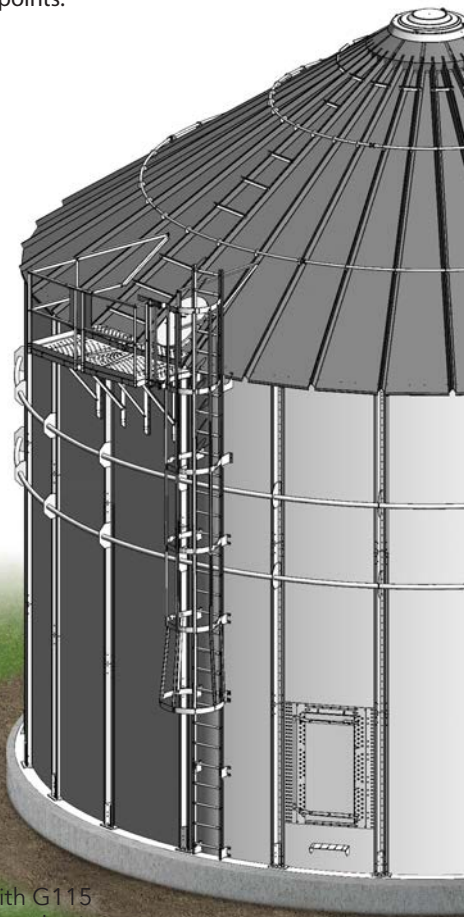
We offer a conventional ladder with a safety cage for safe access. For a more comfortable climb, a curved stairway can be installed.

## SIDEWALLS

All sidewall sheets feature 4" wide corrugation with G115 galvanized coating for superior protection and long-lasting service.

## ACCESS DOORS

Each bin comes with 44" or 66" doors, along with a standard bin step for convenient access.





## HARDWARE

For bin assembly, we utilize JS1000™ plated Grade 8.2 hardware. This plating has demonstrated complete rust-free performance in over 1,000 hours of salt spray testing, surpassing regular electro-zinc products by 20-25 times in corrosion resistance.

## ROOF SHEET

Roof sheets utilize a 3" rib and flat plane corrugation with 4" spacing for increased rigidity.

## BENEFITS OF 4" CORRUGATION:

- Decreased resistance to downward grain flow, minimizing hang-ups and bridging.
- Enhanced vertical strength compared to narrow corrugation.
- Larger 44" sidewall sheets allow for reduced build time.

## ROOF VENT

Large 18" roof vents are available. Extruded roof vent openings can be pre-punched into roof sheets as requested to ensure weather sealing and quick assembly.

## WIND RINGS

Wind rings are provided as required

## AERATION SYSTEMS

Centrifugal and axial fans with high and low speeds available to meet all your aeration needs. Full or partial aeration floors are available to suit any application.

## UNLOADING SYSTEMS

Unloading options include power sweep systems, conventional tube unloads, sweep augers and chain conveyors.



# GRAIN BINS

## CAPACITIES AND SIZES

Bin Diameter	# of Rings	Storage Capacity				Eave Height (ft)	Eave Height (m)	Total Height (ft)	Total Height (m)
		Bushels	Cubic Meters	Cubic Feet	Metric Tons				
15'	3	1,836	64.7	2,285	51.8	11' 2"	3.4	15' 11"	4.85
	4	2,382	84	2,965	67.2	14' 10"	4.52	19' 7"	5.97
	5	2,928	103.2	3,645	82.6	18' 6"	5.64	23' 3"	7.09
	6	3,474	122.4	4,324	98	22' 3"	6.78	26' 11"	8.2
	7	4,021	141.7	5,004	113.4	25' 10"	7.87	30' 8"	9.35
	8	4,566	160.9	5,683	128.8	29' 6"	8.99	34' 3"	10.44
	9	5,113	180.2	6,363	144.3	33' 2"	10.11	37' 11"	11.56
	10	5,659	199.4	7,043	159.7	36' 10"	11.23	41' 7"	12.67
	11	6,205	218.7	7,722	175.1	40' 6"	12.34	45' 3"	13.79
	12	6,751	237.9	8,402	190.5	44' 2"	13.46	48' 11"	14.91
	3	2,698	95.1	3,358	76.1	11' 2"	3.4	16' 10"	5.13
	4	3,484	122.8	4,336	98.3	14' 10"	4.52	20' 6"	6.25
18'	5	4,270	150.5	5,315	120.5	18' 6"	5.64	24' 3"	7.39
	6	5,056	178.2	6,293	142.6	22' 3"	6.78	27' 10"	8.48
	7	5,843	205.9	7,272	164.9	25' 10"	7.87	31' 7"	9.63
	8	6,630	233.6	8,251	187.1	29' 6"	8.99	35' 2"	10.72
	9	7,416	261.3	9,229	209.2	33' 2"	10.11	38' 10"	11.84
	10	8,202	289.1	10,208	231.4	36' 10"	11.23	42' 6"	12.95
	11	8,989	316.8	11,187	253.6	40' 6"	12.34	46' 2"	14.07
	12	9,775	344.5	12,165	275.8	44' 2"	13.46	49' 10"	15.19
	3	3,745	132	4,661	105.7	11' 2"	3.4	18' 8"	5.69
	4	4,815	169.7	5,993	135.8	14' 10"	4.52	22' 4"	6.81
	5	5,886	207.4	7,325	166.1	18' 6"	5.64	26'	7.92
	6	6,956	245.1	8,657	196.3	22' 3"	6.78	29' 6"	9.07
21'	7	8,026	282.9	9,989	226.4	25' 10"	7.87	33' 5"	10.19
	8	9,097	320.6	11,321	256.7	29' 6"	8.99	37'	11.28
	9	10,167	358.3	12,653	286.8	33' 2"	10.11	40' 8"	12.4
	10	11,237	396	13,985	317	36' 10"	11.23	44' 4"	13.51
	11	12,308	433.7	15,317	347.3	40' 6"	12.34	48'	14.63
	12	13,378	471.4	16,649	377.4	44' 2"	13.46	51' 8"	15.75
24'	3	4,986	175.7	6,206	140.7	11' 2"	3.4	19' 3"	5.87
	4	6,385	225	7,946	180.1	14' 10"	4.52	22' 11"	6.99
	5	7,782	274.2	9,685	219.6	18' 6"	5.64	26' 8"	8.13
	6	9,180	323.5	11,425	259	22' 3"	6.78	30' 3"	9.22
	7	10,578	372.8	13,165	298.4	25' 10"	7.87	33' 12"	10.36
	8	11,977	422.1	14,905	337.9	29' 6"	8.99	37' 8"	11.48
	9	13,374	471.3	16,644	377.3	33' 2"	10.11	41' 3"	12.57
	10	14,772	520.6	18,384	416.8	36' 10"	11.23	44' 11"	13.69
	11	16,170	569.8	20,124	456.2	40' 6"	12.34	48' 8"	14.83
	12	17,569	619.1	21,864	495.7	44' 2"	13.46	52' 3"	15.93
	3	6,431	226.6	8,004	181.4	11' 2"	3.4	20' 2"	6.15
	4	8,201	289	10,206	231.4	14' 10"	4.52	23' 10"	7.26
27'	5	9,970	351.4	12,408	281.3	18' 6"	5.64	27' 6"	8.38
	6	11,740	413.7	14,610	331.2	22' 3"	6.78	31' 3"	9.53
	7	13,509	476.1	16,812	381.1	25' 10"	7.87	34' 10"	10.62
	8	15,278	538.4	19,013	431	29' 6"	8.99	38' 6"	11.73
	9	17,047	600.7	21,215	481	33' 2"	10.11	42' 2"	12.85
	10	18,817	663.1	23,417	530.9	36' 10"	11.23	45' 10"	13.97
	11	20,586	725.4	25,619	580.8	40' 6"	12.34	49' 6"	15.09
	12	22,355	787.8	27,821	630.7	44' 2"	13.46	53' 2"	16.21

- 1 1/2 ring door is standard
- Bin door step is included
- Standard roof is included with each bin
- 4" wide corrugation is standard
- Stiffened bins also available

## PRODUCT FEATURES:



Bin Diameter	# of Rings	Storage Capacity				Eave Height (ft)	Eave Height (m)	Total Height (ft)	Total Height (m)
		Busheis	Cubic Meters	Cubic Feet	Metric Tons				
30'	4	10,273	362	12,785	289.8	14' 10"	4.52	24' 10"	7.57
	5	12,457	439	15,503	351.5	18' 6"	5.64	28' 6"	8.69
	6	14,642	516	18,222	413.1	22' 3"	6.78	32' 3"	9.83
	7	16,826	593	20,940	474.7	25' 10"	7.87	35' 10"	10.92
	8	19,010	669.9	23,658	536.3	29' 6"	8.99	39' 6"	12.04
	9	21,195	746.9	26,377	598	33' 2"	10.11	43' 2"	13.16
	10	23,379	823.9	29,095	659.6	36' 10"	11.23	46' 10"	14.27
	11	25,564	900.9	31,814	721.2	40' 6"	12.34	50' 6"	15.39
	12	27,748	977.8	34,532	782.9	44' 2"	13.46	54' 2"	16.51
33'	4	12,611	444.4	15,694	355.8	14' 10"	4.52	25' 9"	7.85
	5	15,254	537.5	18,983	430.4	18' 6"	5.64	29' 5"	8.97
	6	17,896	630.7	22,272	504.9	22' 3"	6.78	33' 2"	10.11
	7	20,539	723.8	25,561	579.5	25' 10"	7.87	36' 9"	11.2
	8	23,182	816.9	28,850	654	29' 6"	8.99	40' 5"	12.32
	9	25,826	910.1	32,140	728.6	33' 2"	10.11	44' 1"	13.44
	10	28,469	1,003.20	35,429	803.2	36' 10"	11.23	47' 9"	14.55
	11	31,112	1,096.40	38,718	877.8	40' 6"	12.34	51' 5"	15.67
	12	33,755	1,189.50	42,007	952.3	44' 2"	13.46	55' 1"	16.79
36'	4	15,221	536.4	18,943	429.4	14' 10"	4.52	26' 8"	8.13
	5	18,367	647.2	22,857	518.2	18' 6"	5.64	30' 5"	9.27
	6	21,513	758.1	26,772	607	22' 3"	6.78	34'	10.36
	7	24,658	868.9	30,686	695.7	25' 10"	7.87	37' 9"	11.51
	8	27,804	979.8	34,601	784.4	29' 6"	8.99	41' 5"	12.62
	9	30,949	1,090.60	38,515	873.2	33' 2"	10.11	45'	13.72
	10	34,095	1,201.50	42,430	961.9	36' 10"	11.23	48' 8"	14.83
	11	37,240	1,312.30	46,344	1,050.70	40' 6"	12.34	52' 5"	15.98
	12	40,386	1,423.20	50,259	1,139.40	44' 2"	13.46	56'	17.07
42'	4	21,300	750.6	26,508	600.9	14' 10"	4.52	28' 7"	8.71
	5	25,583	901.5	31,837	721.8	18' 6"	5.64	32' 3"	9.83
	6	29,864	1,052.40	37,165	842.6	22' 3"	6.78	35' 12"	10.97
	7	34,145	1,203.30	42,493	963.3	25' 10"	7.87	39' 8"	12.09
	8	38,427	1,354.10	47,821	1,084.20	29' 6"	8.99	43' 3"	13.18
	9	42,708	1,505.00	53,149	1,204.90	33' 2"	10.11	46' 11"	14.3
	10	46,990	1,655.90	58,477	1,325.70	36' 10"	11.23	50' 7"	15.42
	11	51,271	1,806.80	63,805	1,446.50	40' 6"	12.34	54' 3"	16.54
	12	55,552	1,957.60	69,133	1,567.30	44' 2"	13.46	57' 11"	17.65
48'	4	28,582	1,007.20	35,570	806.4	14' 10"	4.52	30' 5"	9.27
	5	34,174	1,204.30	42,529	964.2	18' 6"	5.64	34' 2"	10.41
	6	39,766	1,401.30	49,488	1,121.90	22' 3"	6.78	37' 9"	11.51
	7	45,358	1,598.40	56,447	1,279.70	25' 10"	7.87	41' 6"	12.65
	8	50,951	1,795.50	63,407	1,437.50	29' 6"	8.99	45' 2"	13.77
	9	56,543	1,992.50	70,366	1,595.30	33' 2"	10.11	48' 9"	14.86
	10	62,135	2,189.60	77,325	1,753.00	36' 10"	11.23	52' 5"	15.98
	11	67,727	2,386.70	84,284	1,910.80	40' 6"	12.34	56' 2"	17.12
	12	73,319	2,583.70	91,243	2,068.60	44' 2"	13.46	59' 9"	18.21





## LAMBTON CONVEYOR LIMITED

102 Arnold Street  
Wallaceburg, Ontario, Canada  
N8A 3P4

Tel: 1 519.627.8228  
Fax: 1 519.627.0250  
Toll Free: 1 888.239.9713 (North America)

Email: [sales@lambtonconveyor.com](mailto:sales@lambtonconveyor.com)  
Website: [www.lambtonconveyor.com](http://www.lambtonconveyor.com)

All specifications and designs are subject  
to change without notice due to continuous product improvement

