

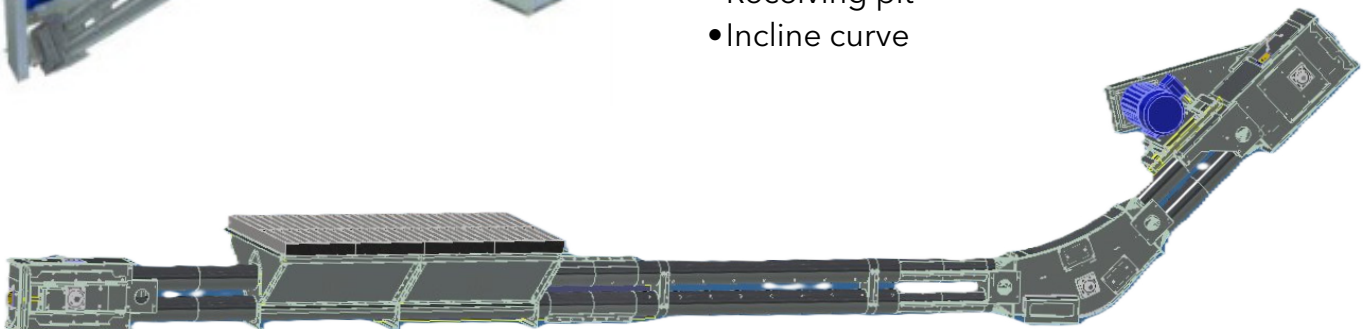


- The GRAIN CANNON is a versatile chain conveyor that utilizes a galvanized tube housing to convey material horizontally or at angles of up to 60°.
- Grain cannons are able to span long distances without requiring catwalks, making them a more economical alternative to a drag conveyor

FEATURES & OPTIONS

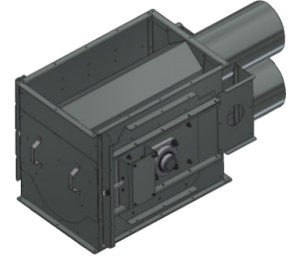


- Powerful grain discharge
- Configurable angle and direction
- Durable construction
- Efficient grain management
- Versatile applications
- 1/2" UHMW paddles
- Low-profile discharge available
- Receiving pit
- Incline curve



WIDE CANNON BOOT

- Extra wide for increased flow capacity
- Top flow diverter to guide grain around the return chain and sprocket
- Round bottom pan for enhanced cleanout
- Inspection doors on top and back for easy access for service and grain monitoring
- Standard large diameter shaft for added strength
- For use with head driven cannons



INCLINE CANNON CURVE

- Available in 6", 8", 10", and 12" sizes
- Fully galvanized shell, laser cut for precision
- Top, midpan, and bottoms made from 8GA steel
- Self-ficturing slots in midpan to ensure consistency
- Inspection windows on both top and bottom chambers
- Weld-on leg supports with anchor holes
- Idler sprockets to help guide chain through incline
- Capacities up to 10,000 BPH



Tube size	6" (152mm)	8" (203mm)	10" (254mm)	12" (305mm)	14" (356mm)	Double 12" (305mm)	
Maximum Capacity	1,500 BPH	4,000 BPH	6,000 BPH	10,000 BPH	13,000 BPH	15,000 BPH	20,000 BPH
	(40 MTPH)	(100 MTPH)	(150 MTPH)	(250 MTPH)	(325 MTPH)	(375 MTPH)	(500 MTPH)
Chain travel speed	328 FPM	333 FPM	358 FPM	403 FPM	385 FPM	303 FPM	403 FPM
Head shaft RPM	124	117	117	109	84	82	109
Tube gauge	12 GA	10 GA	10 GA	10 GA	3/16"	10 GA	
	(2.6 mm)	(3.43 mm)	(3.43 mm)	(3.43 mm)	(3.43 mm)	(4.75 mm)	
UHMW paddle thickness	1/2"	1/2"	1/2"	1/2"	1/2"	3/4"	
	(12.7 mm)	(12.7 mm)	(12.7 mm)	(12.7 mm)	(12.7 mm)	(19 mm)	
Conveyor chain	81X	81XHH	81XHH	81XHH	81XHH/WH124	81XHH	
Angle of Operation	Horsepower required per foot of conveyor						
	Kilowatt power required per meter of conveyor						
Horizontal	0.042	0.076	0.114	0.18	1.05	1.17	1.5
	0.103	0.185	0.278	0.439	0.783	0.872	1.119
15 deg.	0.062	0.113	0.17	0.268	1.29	1.44	1.77
	0.151	0.275	0.414	0.654	0.962	1.074	1.320
30 deg.	0.085	0.167	0.25	0.397	1.49	1.66	2.03
	0.207	0.407	0.61	0.968	1.111	1.238	1.514
45 deg.	0.12	0.222	0.333	0.524	1.64	1.82	2.22
	0.292	0.541	0.812	1.278	1.223	1.357	1.655
60 deg.	0.14	0.27	0.405	0.629	1.73	1.92	2.34
	0.341	0.658	0.988	1.534	1.290	1.432	1.745
Empty weight /FT (LBS)	24	39	47	54	70	108	108
Full weight /FT (LBS)**	33	55	72	89	116	161	178
Empty weight /m (KG)	16	26	32	36	47	72	72
Full weight /m (KG)**	22	37	48	60	78	108	120