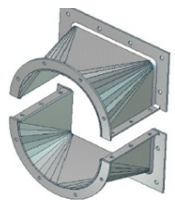




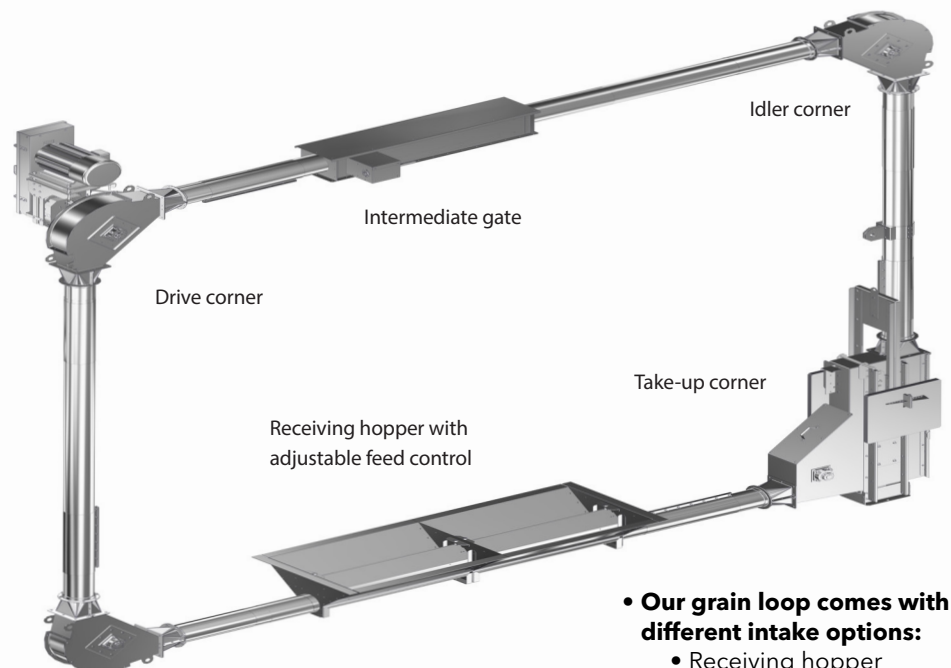
- Our grain loop is a continuous conveying system that offers easy input loading and unloading of product.
- The closed loop system offers a unique solution for in-load, recirculation, unloading bins/warehouses, and out-load of product with a single piece of equipment.
- Bolted installation and modular design allows for easy and convenient assembly of the loop system, as well as easy extensions/modifications.

FEATURES & OPTIONS

- Continuous loop design
- Dust containment system
- Compatible with accessories
- Expandable
- Modular Design
- Split Sprockets
- Galvanized construction to ensure a long service life
- Spherical roller Bearings
- Less maintenance in comparison to traditional conveying systems
- **Complete line of accessory equipment:**
 - Intermediate discharge gates
 - Transitions
 - Catwalks and support towers
 - Receiving hoppers and bin wells



The most common wear point of the system are the transitions on the corners. Our unique split transitions allow for quick and easy replacement without having to break the chain.

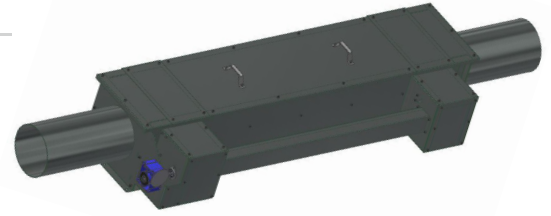


- **Our grain loop comes with two different intake options:**
 - Receiving hopper
 - Inlet hopper



ROTARY GATES

- Full galvanized construction for increased durability
- Hot-dipped rotating downspout tube with dual chain drive and UHMW chain tensioners to effectively and uniformly discharge material
- UHMW wrapper with adjustable holding brackets provides tight seal around downspout
- Flanged UHMW pipe seals to improve longevity of chain
- Top inspection panels at entry and exit points



Tube Size	6" (15.2 cm)	8" (20.3 cm)	10" (25.4 cm)	12" (30.48 cm)
Maximum Capacity*	1,500 BPH 38 MTPH	4,000 BPH 102 MTPH	6,000 BPH 152 MTPH	10,000 BPH 254 MTPH
Chain Travel Speed	318 fpm 97 mpm	318 fpm 97 mpm	336 fpm 102 mpm	388 fpm 118 mpm
Head Shaft RPM	81	81	81	81
Tube gauge	12 GA 2.6 mm	10 GA 3.43 mm	10 GA 3.43 mm	10 GA 3.43 mm
UHMW paddle thickness	½" 12.7 mm	½" 12.7 mm	½" 12.7 mm	½" 12.7 mm
Conveyor Chain	81X	81XHH	81XHH	81XHH
Max. HP (kW)	30 (22)	60 (44)	100 (74)	120 (90)
Angle of Operation	Horsepower required per foot of conveyor. Kilowatt power required per meter of conveyor.			
Horizontal	0.042 0.103	0.076 0.186	0.114 0.279	0.178 0.435
Vertical section length and angle relative to vertical line.				
0° (straight line)	0.2 0.489	0.35 0.856	0.5 1.223	0.75 1.835
15°	0.193 0.472	0.338 0.827	0.482 1.179	0.724 1.771
30°	0.173 0.423	0.3 0.734	0.433 1.06	0.65 1.59
45°	0.141 0.345	0.247 0.604	0.353 0.863	0.53 1.296
Empty weight/FT (lbs)	12	19	23	27
Full Weight/FT (lbs)**	21	35	48	62
Empty weight/m (kg)	18	28	34	40
Full Weight/m (kg)**	31	52	71	93

**Full weight is based on bottom tube full of 45 lb/ft³ (721 kg/m³) material