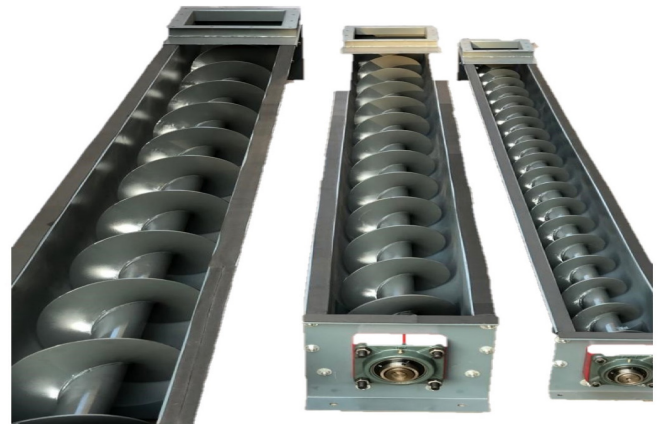




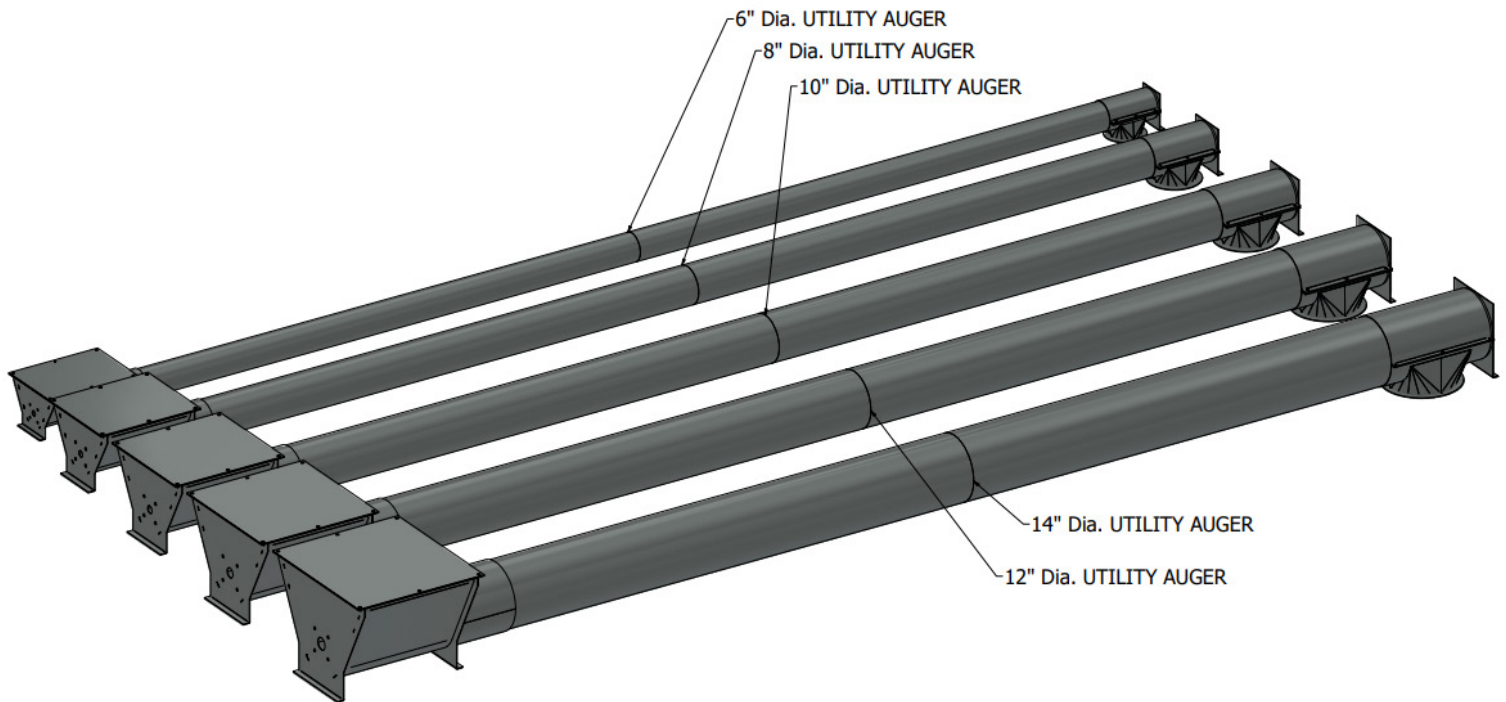
## FEATURES & OPTIONS

- Sizes from 6" to 24" available
- Heavy duty helical style auger
- Heavy duty, galvanized steel construction for enhanced durability and reduced maintenance
- Formed, galvanized steel U-trough with easily removeable lid
- Round bottom self cleaning design
- Bolted coupler shaft allows for easy assembly and customization
- Versatile and effective for a wide variety of commodities
- Fast and efficient way to handle grain
- **CAPACITIES UP TO 6,500 BPH**



TUBE DIAMETER	MAX RPM	CAPACITY AT MAX RPM (BPH)
6"	165	295
9"	155	1020
12"	145	2250
14"	140	3500
16"	130	4860
18"	120	6500





## FEATURES & OPTIONS

- Available in 6", 8", 10", 12", and 14" tube sizes
- Heavy duty helical style auger
- Can be operated on angles of up to 45 degrees
- Heavy duty, galvanized steel construction for enhanced durability and reduced maintenance
- Self-cleaning
- Bolted coupler shaft to allow for easy assembly and customization
- Slip fit tube on boot hopper adjustable to required length
- Portable version available
- Versatile and effective for a wide variety of commodities
- Fast and efficient way to handle grain
- Cost effective versus permanent handling solutions
- **CAPACITIES UP TO 6,400 BPH**

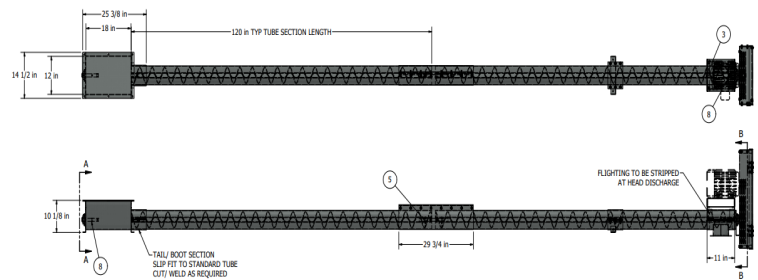


Diagram shows a 6" utility auger

TUBE DIAMETER	RPM	CAPACITY (BPH)
6"	100 - 438	200 - 1095
8"	100 - 443	400 - 2215
10"	100 - 386	880 - 4246
12"	100 - 280	1440 - 5040
14"	100 - 200	2560 - 6400