

## CHAIN CONVEYORS STANDARD FEATURES

### HEAD



- Computer-aided modular bolt together design
- CNC manufactured
- 10-8-5 gauge standard galvanized construction
- Heavy-duty pillow block bearings
- Heavy-duty drive sprocket
- Removable inspection cover
- Dust seals



### TRUNKING



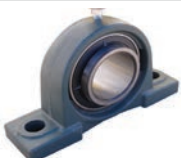
- Computer aided modular bolt together design
- CNC manufactured
- 10 gauge galvanized sides
- 10-8-5 gauge galvanized bottoms available
- UHMW return rollers
- Pre-assembled trunk sections
- Optional abrasion-resistant steel liners for bottom and sides (only optional for flat bottom)
- AR liner comes standard in round bottom conveyors
- Hip style lids available



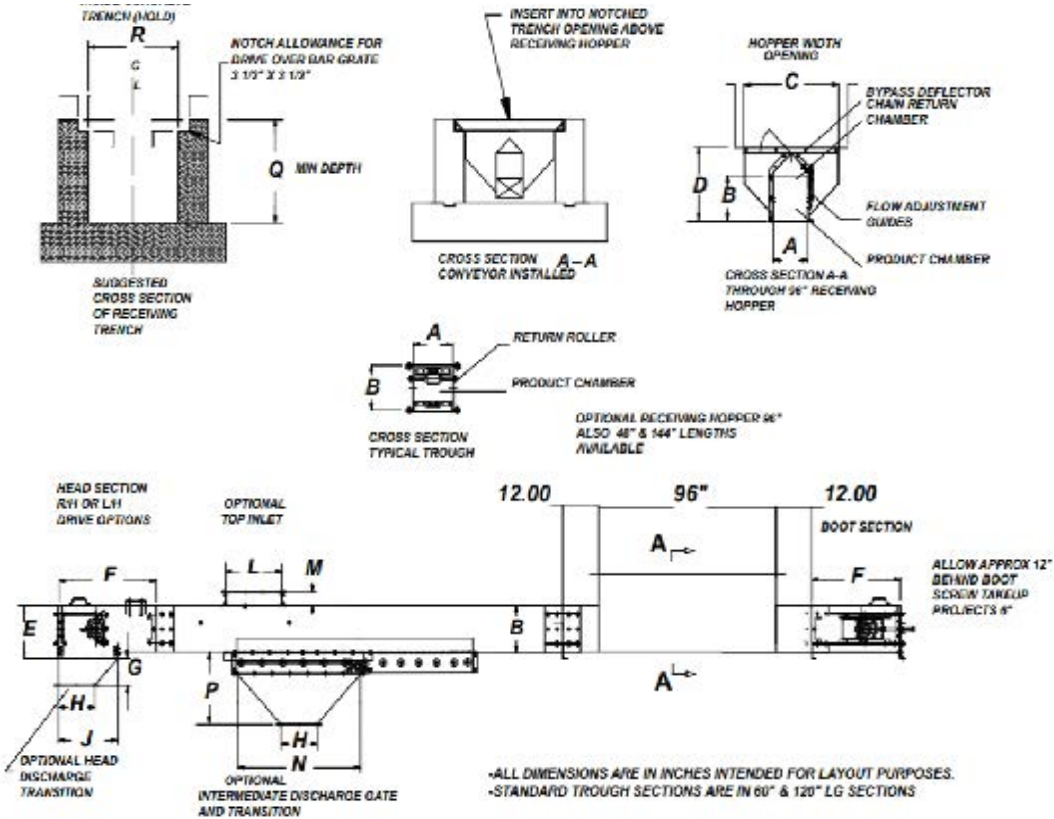
### TAIL



- Computer-aided modular bolt together design
- CNC Manufactured
- 10-8-5 gauge standard galvanized construction
- Heavy-duty pillow block bearings
- Heavy-duty sprocket
- Acme screw slack adjusters
- Removable inspection covers



The head and boot sections of the Lambton Drag Conveyor comes complete with long lasting roller bearings, with optional auto grease. Auto grease ensures your drag operates with the proper amount of lubrication at all times



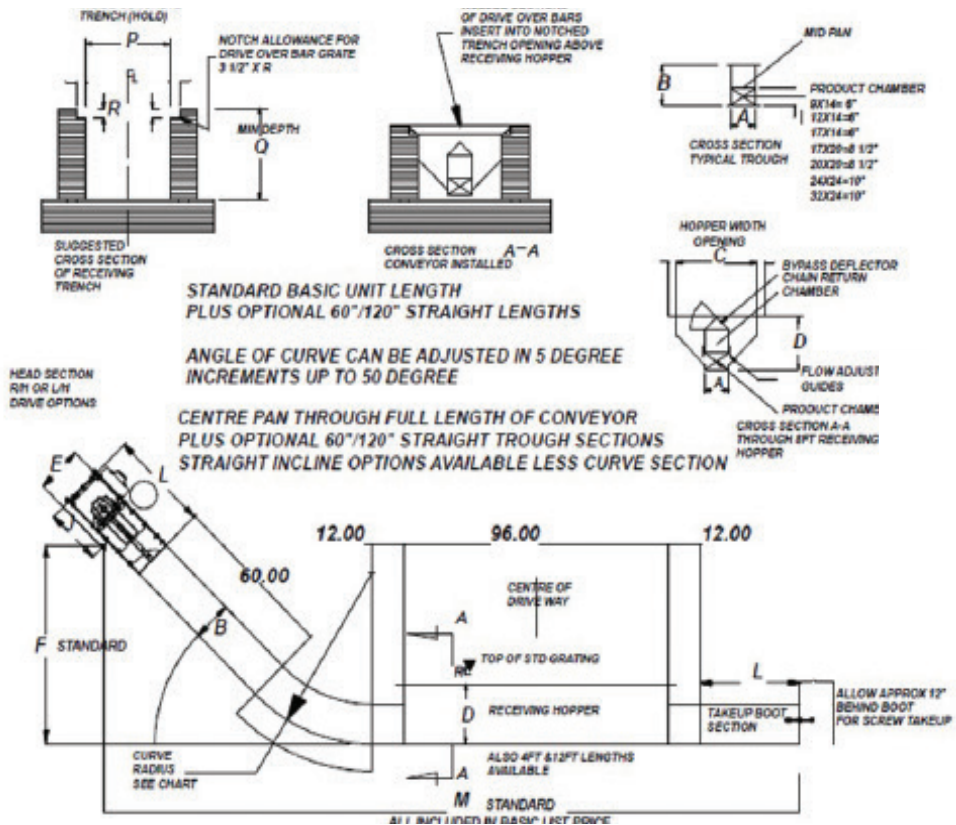
# FLAT BOTTOM LEVEL CONVEYORS

BPH	Drag Size	RPM	FPM
1,000	GLD-09X9	37	64
1,500	GLD-09X9	55	95
2,000	GLD-09X9	74	128
2,500	GLD-09X9	92	160
3,000	GLD-09X9	109	189
3,000	GLD-09X17	31	95
4,000	GLD-09X17	41	126
5,000	GLD-09X17	51	158
6,000	GLD-09X17	61	189
6,000	GLD-12X17	46	142
7,000	GLD-12X17	54	165
8,000	GLD-12X17	61	189
8,000	GLD-16X17	46	145
9,000	GLD-16X17	52	160
10,000	GLD-16X17	57	177
10,000	GLD-16X20	46	160
12,000	GLD-16X20	55	185
13,000	GLD-20X20	47	160
15,000	GLD-20X20	53	184
16,000	GLD-24X24	36	138
20,000	GLD-24X24	44	170
23,000	GLD-32X24	37	146
26,000	GLD-32X24	42	165
30,000	GLD-32X24	49	192

	9X9	9X17	12X17	13X11	16X17	16X20	20X20	24X24	32X24
A	9	9	12	13	16	16	20	24	32
B	9	17	17	11	17	20	20	24	24
C	31	31	31	31	31	31	31	35	43
D	25.5	25.5	27	25.5	27	30	30	36	36
E	9.25	17.25	17.25	11.25	17.25	20.25	20.25	27.25	27.25
F	24	30	30	24	30	42	42	48	48
G	9	8	8	6	8	8	8	12	12
H	10	10	12	12	16	20	20	24	32
J	13	20	20	16	20	24	24	28	28
L	19	19	19	20	19	19	19	24	24
M	3.5	3.5	3.5	3.5	3.5	3.5	3.5	3.5	3.5
N	42	42	42	42	42	42	42	42	42
P	20	20	20	20	20	20	20	20	20
Q	30	30	32	30	32	35	35	42	42
R	32	32	32	32	32	32	32	36	44

\*All dimensions are in inches intended for layout purposes.

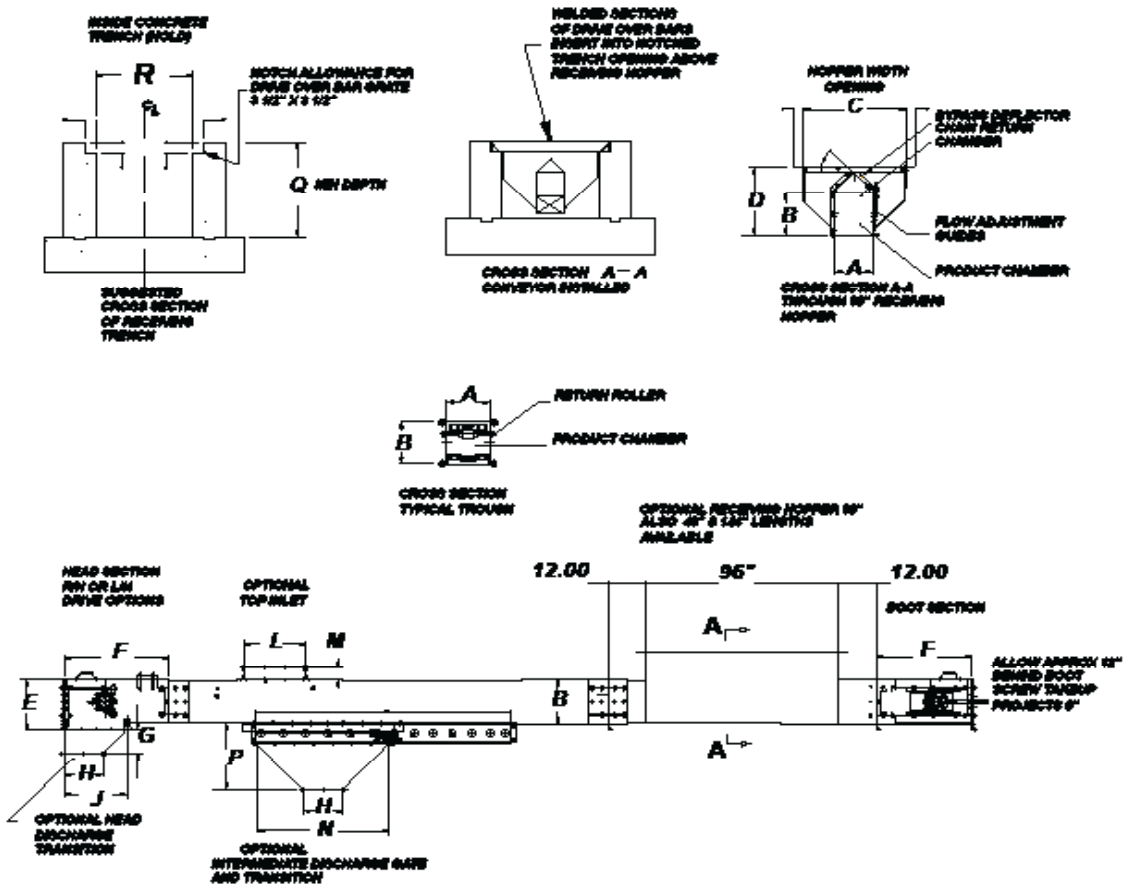
\*Standard trough sections are in 60" & 120" LG sections.



# FLAT BOTTOM INCLINE CONVEYORS

BPH	Drag Size	RPM	FPM
1,000	GLID-09X14	34	74
1,500	GLID-09X14	51	110
2,100	GLID-09X14	71	154
2,500	GLID-09X14	85	185
3,100	GLID-12X14	69	155
3,400	GLID-12X14	78	170
3,900	GLID-12X14	90	195
3,900	GLID-17X14	71	153
5,000	GLID-17X14	90	195
4,000	GLID-17X20	29	99
5,000	GLID-17X20	36	124
6,000	GLID-17X20	43	149
7,000	GLID-17X20	50	174
7,000	GLID-20X20	43	147
7,500	GLID-20X20	46	157
8,000	GLID-20X20	48	165
8,500	GLID-20X20	51	177
7,000	GLID-24X24	26	106
8,000	GLID-24X24	29	121
9,000	GLID-24X24	33	134
10,000	GLID-24X24	37	152
10,000	GLID-32X24	27	110
12,500	GLID-32X24	33	138

	9X14	12X14	17X14	17X20	20X20	24X24	32X24
RADIUS	60"	60"	60"	72"	72"	96"	96"
A	9	12	17	17	20	24	32
B	14	14	14	20	20	24	24
C	29	32	39	41	45	51	59
D	22	22	25	30	33	39	42
E	17	17	17	23	23	27	27
F	69	69	69	73	75	78	78
J	20	20	20	20	20	24	24
L	36	36	36	36	36	46	46
M	254	254	254	263	263	290	290
P	30.5	33.5	40.5	42.5	45.5	52.5	60.5
Q	27	27	30	36	39	45	48
R	3.5	3.5	3.5	3.5	4.5	4.5	4.5
S	49.5	49.5	49.5	56	56	71.5	71.5
T	109.5	109.5	109.5	117	117	139	139



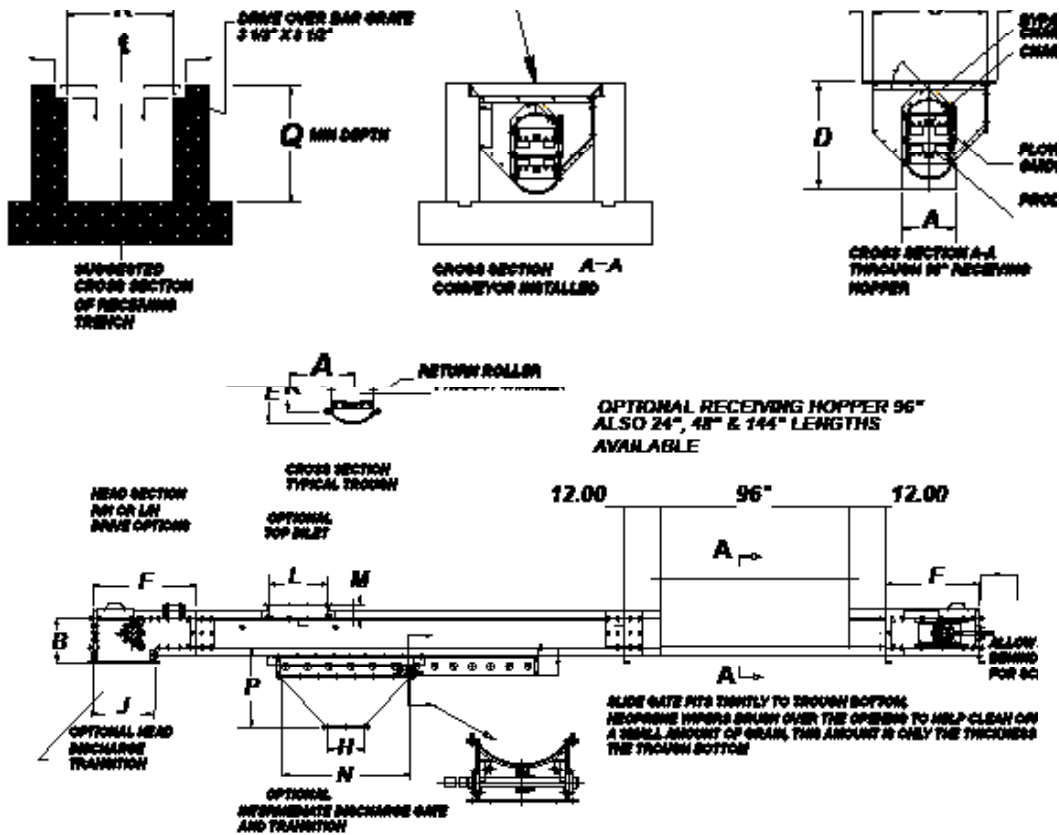
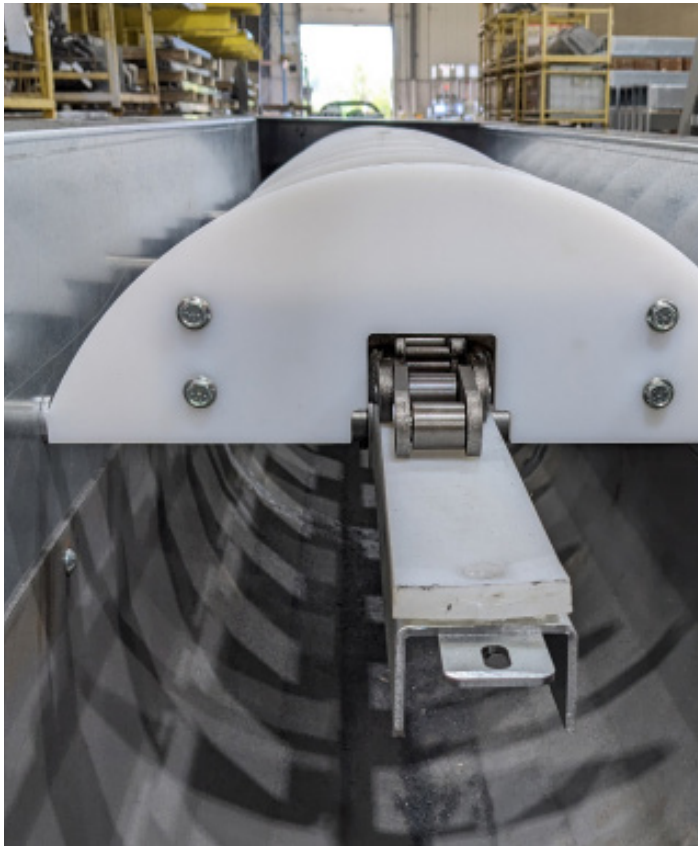
# FLAT BOTTOM LOW-PROFILE

BPH	DRAG SIZE	RPM	FPM
3,000	GLD-13X11	49	113
4,000	GLD-13X11	65	150
5,000	GLD-13X11	81	187
5,500	GLD-16X11	70	154
6,000	GLD-16X11	76	176
6,500	GLD-16X11	81	182
7,000	GLD-16X11	88	196

	9X9	13X11	16X11
A	9	13	16
B	9	11	11
C	31	31	31
D	25.5	25.5	25.5
E	9.25	11.25	11.25
F	24	24	24
G	9	6	9
H	9	12	16
J	13	16	16
L	19	20	20
M	3.5	3.5	3.5
N	42	42	42
P	20	20	20
Q	30	30	30
R	32	32	32

\*All dimensions are in inches intended for layout purposes

\*Standard trough sections are in 60" & 120" LG sections



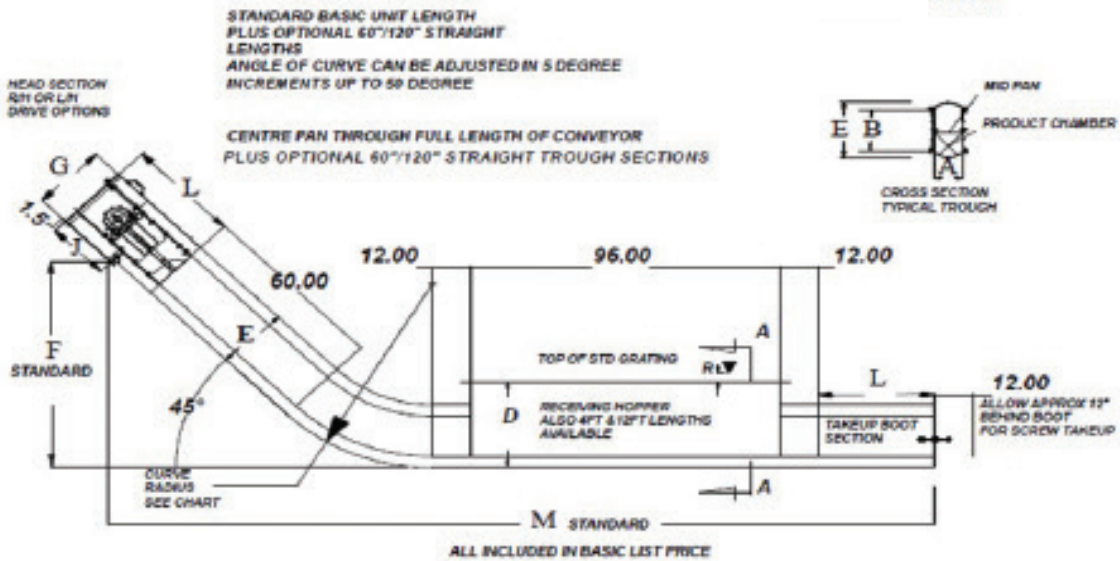
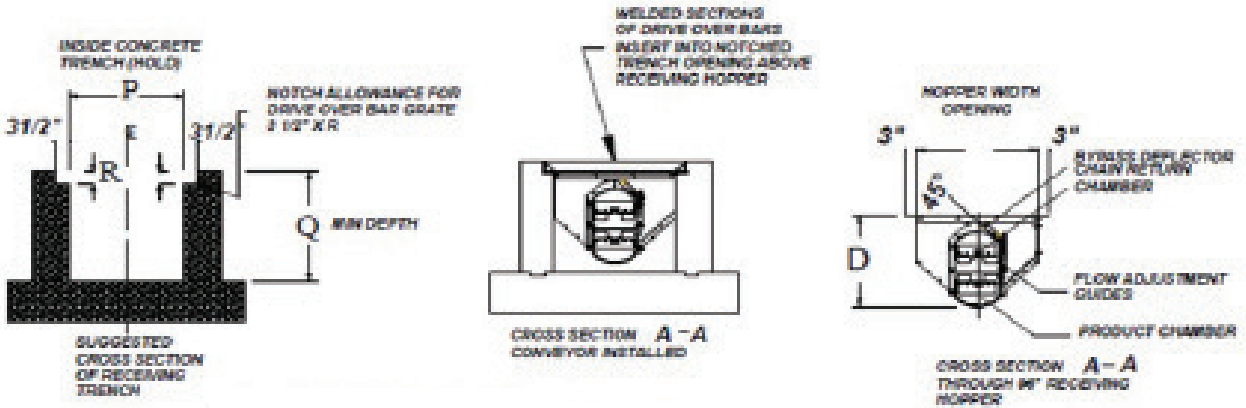
# U-TROUGH LEVEL CONVEYORS

BPH	DRAG SIZE	RPM	FPM
1,000	GLR-09X9	37	64
1,500	GLR-09X9	55	95
2,000	GLR-09X9	74	128
2,500	GLR-09X9	92	160
3,000	GLR-09X9	109	189
3,000	GLR-09X17	31	95
4,000	GLR-09X17	41	126
5,000	GLR-09X17	51	158
6,000	GLR-09X17	61	189

	9 X 9	9 X 17	12 X 17	16 X 17
A	12	12	15	19
B	19	27	31	31
C	30	30	30	30
D	21	31	34	33
E	12	23	25	27
F (HEAD)	34.5	34.5	35.5	37
F (BOOT)	31.5	31.5	31.5	33.5
H	12	12	12	16
J	20	20	24	25.5
K	9.2	17.2	17.2	17.2
L	19	19	19	19
M	4.2	4.2	6	8
N	42	42	42	42
P	22.3	22.3	25	25
Q	36	40	42	42
R	33	33	33	33

\*All dimensions are in inches intended for layout purposes

\*Standard trough sections are in 60" & 120" LG sections



# U-TROUGH INCLINE CONVEYORS

BPH	DRAG SIZE	RPM	FPM
1,000	GLIR-09x14	29	62
1,500	GLIR-09x14	43	93
2,100	GLIR-09x14	61	130
2,600	GLIR-09x14	74	160
3,100	GLIR-09x14	88	192
3,100	GLIR-12X14	55	123
3,400	GLIR-12x14	78	170
3,900	GLIR-12x14	90	195
4,300	GLIR-12x14	76	170
5,000	GLIR-12x14	90	195
5,000	GLIR-17X14	48	104
6,000	GLIR-17x14	58	125
7,000	GLIR-17x14	67	146

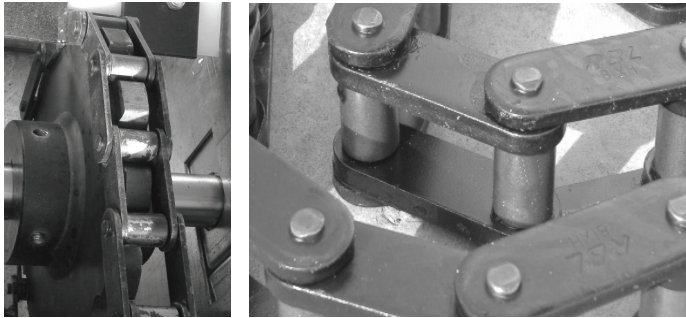
	9X14	12 X 14	17 X 14	17 X 20	24 X 24
RADIUS	62"	64"	64"	78"	78"
A	9	12	17	17	24
B	14	14	14	20	24
C	29	32	32	41	51
D	25.5	30	30	41	
E	19.3	22	22	33	
F	70.4	72	72	74	
G	21.3	23.6	23.6	35	
J	20	20	20	30	
L (HEAD)	37.5	37.5	37.5	43.5	
L (BOOT)	37.5	37.5	37.5	45.5	
M	255	256	256	273	
P	30.5	33.5	40.5	42.5	
Q	36	36	42	48	
R	3.5	3.5	3.5	3.5	

\*All dimensions are in inches intended for layout purposes

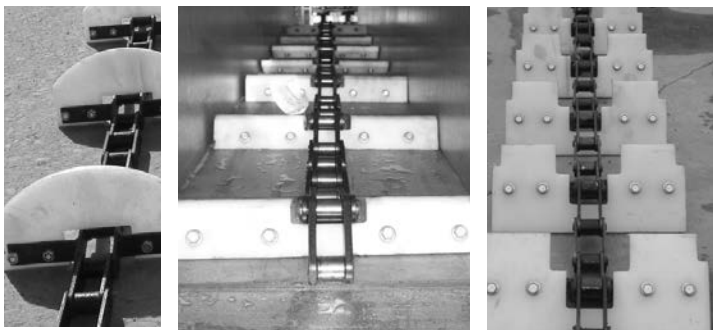
\*Standard trough sections are in 60" & 120" LG sections



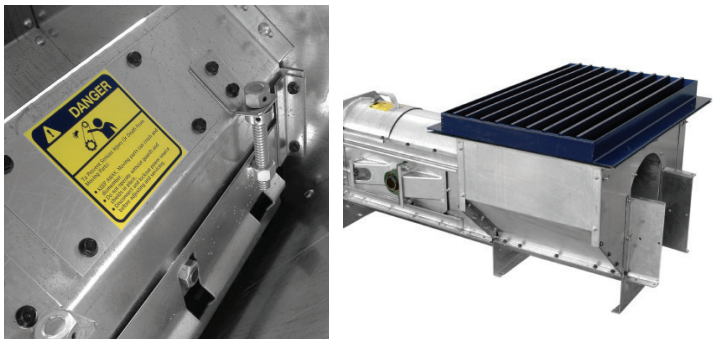
## CHAIN CONVEYORS STANDARD FEATURES



Chain sprockets for both the head and the tail are flame cut or cast from high-grade steel to ensure reliability in material movement



The steel chain is 81X and 81XH with 24,000 and 44,000 lb. average ultimate strength. Welded channel attachments add rigid support for paddles. In larger capacity or long conveyors, dual chains are used. Paddles are 1/2" thick UHMW CNC manufactured for accuracy. UHMW prevents metal to metal contact reducing HP requirements and increasing conveyor life



Lambton Drag Hoppers come standard with adjustable flow gates that control the feeding capacity of the conveyor. Standard hopper lengths are 4, 8 and 12 feet in length

## MANWAY AND CONVEYOR CATWALKS



- Manway and Conveyor Catwalks are designed to fit all conveyors
- 24" standard walkway width
- Support towers are produced with same precision and rigidity as the Manway Catwalks that they support.
- X-Brace trussing is an available option for all Manway Catwalks, walks, as is a Truss and Guy wire kit (not shown)